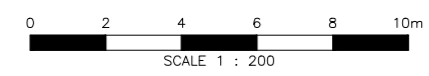


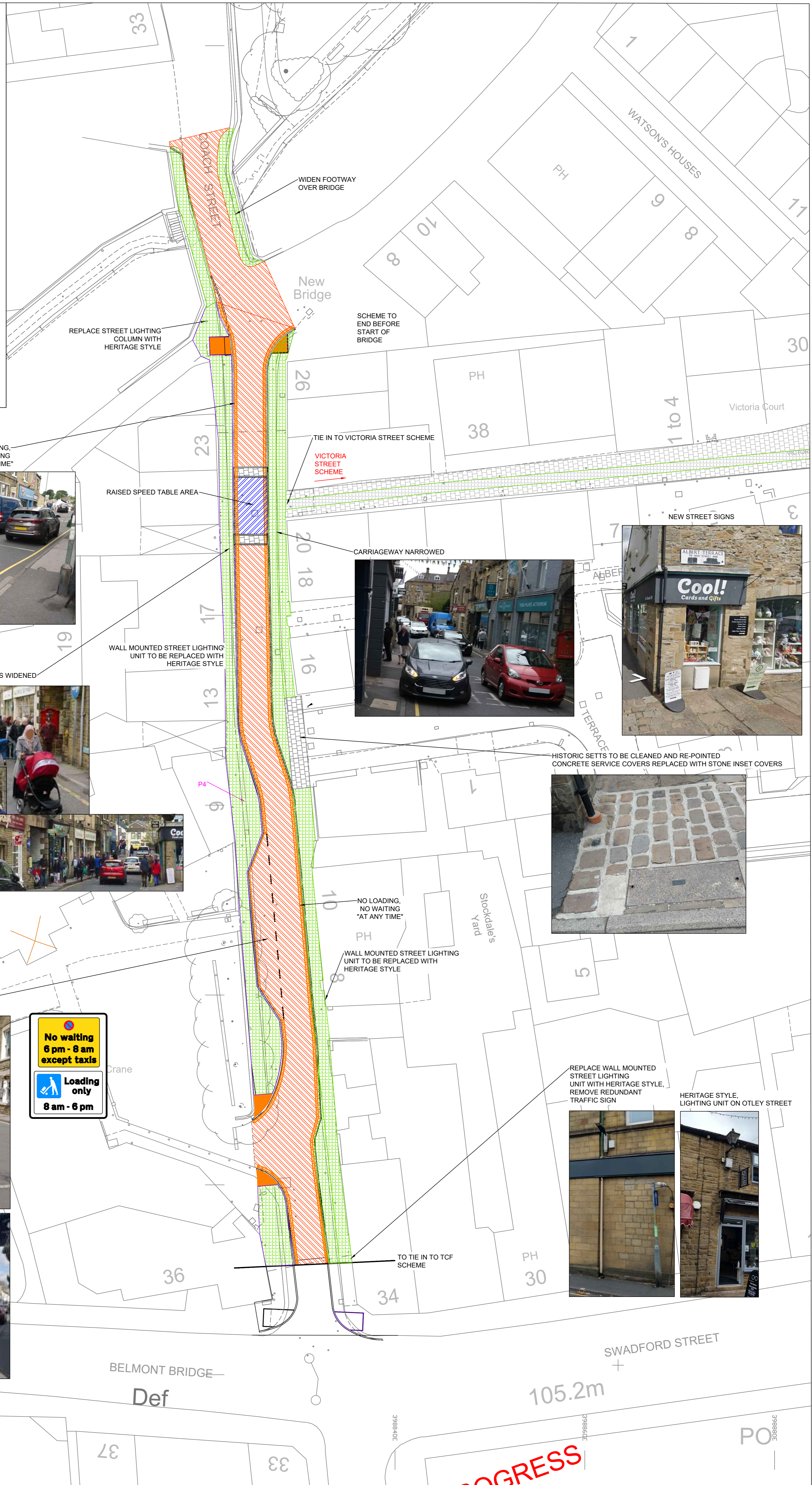
KEY

- WIDENED FOOTWAYS
NEW YORKSTONE FLAGS
- EXISTING SETTS -
CLEANED, RE-POINTED
- NARROWED CARRIAGEWAY
RESURFACE
WITH BUFF COLOURED
CHIPPINGS
- RAISED SPEED TABLE
- NO WAITING,
NO LOADING
AT ANY TIME
- UNCONTROLLED
CROSSING POINTS WITH
TACTILE PAVING
AND DROPPED KERBS

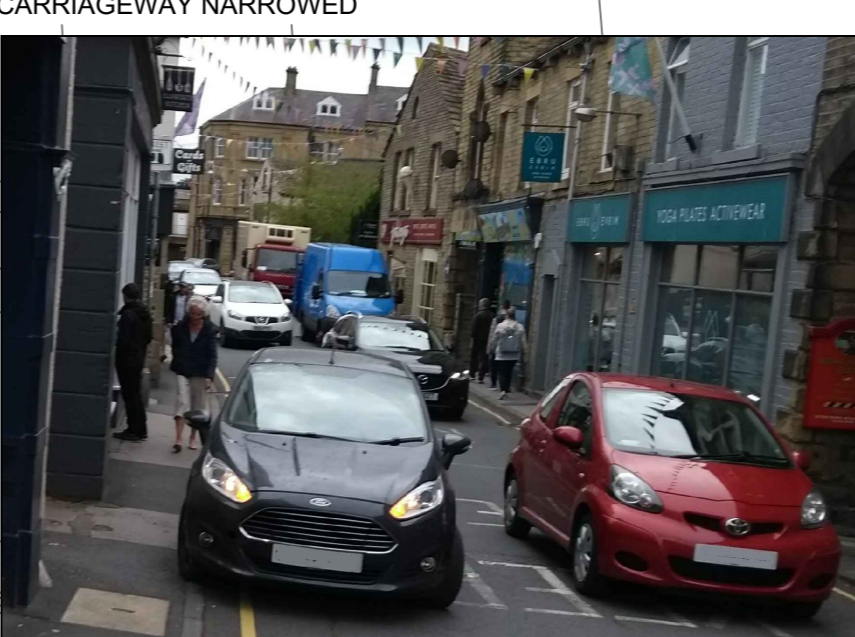
SCALE 1:200



This map is reproduced from Ordnance Survey material with the permission of Ordnance Survey on behalf of the Controller of Her Majesty's Stationery Office © Crown copyright. Unauthorised reproduction infringes Crown copyright and may lead to prosecution or civil proceedings. North Yorkshire County Council. 100017946.



NO LOADING, NO WAITING "AT ANY TIME"



CARRIAGEWAY NARROWED



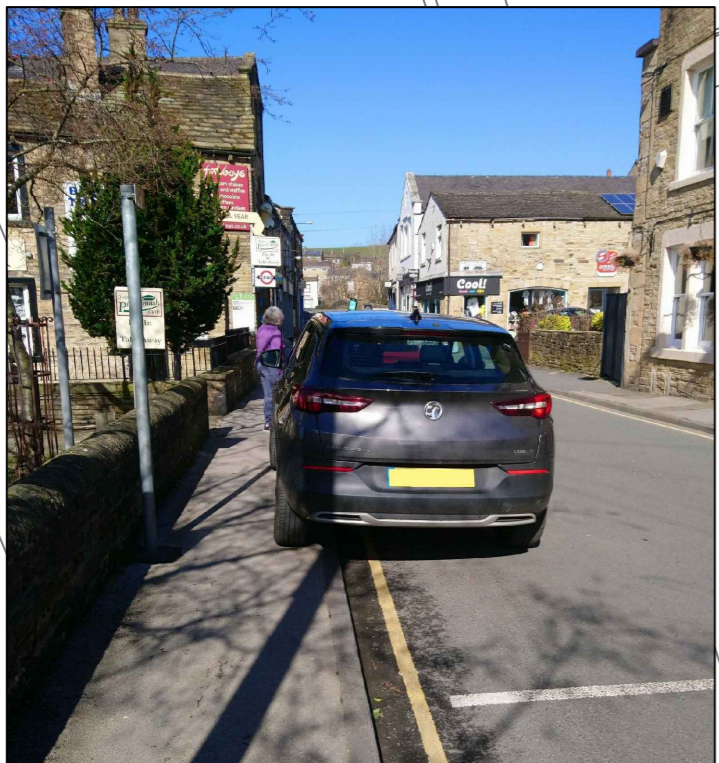
NEW STREET SIGNS



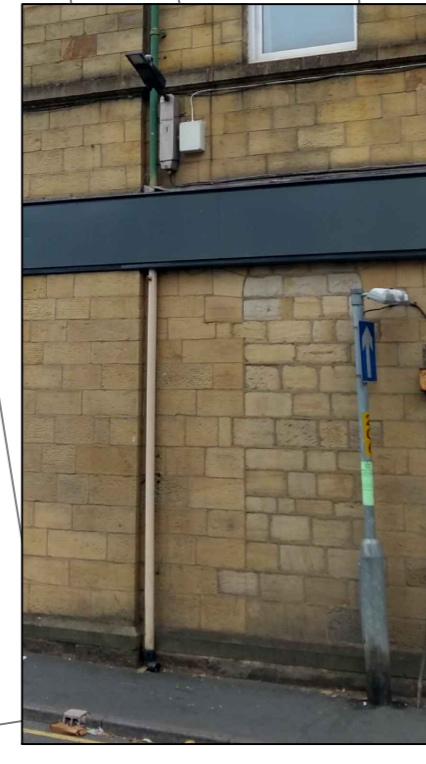
FOOTWAYS WIDENED



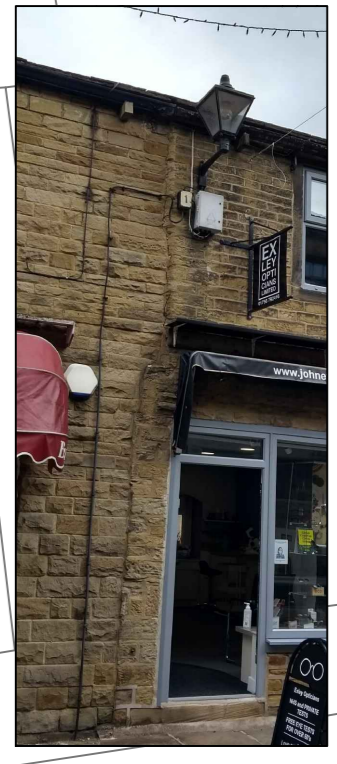
HISTORIC SETTS TO BE CLEANED AND RE-POINTED
CONCRETE SERVICE COVERS REPLACED WITH STONE INSET COVERS



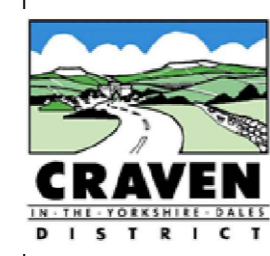
DESIGNATED LOADING BAY / TAXI RANK / COACH DROP OFF POINT



REPLACE WALL MOUNTED STREET LIGHTING UNIT WITH HERITAGE STYLE, REMOVE REDUNDANT TRAFFIC SIGN



HERITAGE STYLE, LIGHTING UNIT ON OTLEY STREET



WORK IN PROGRESS
COACH STREET,
SKIPTON
CONSULTATION LAYOUT PLAN

