

CRAVEN SPATIAL PLANNING SUB-COMMITTEE

Monday 31st January 2022 at 6.30pm

Sub-Committee Members: Councillors Brockbank, Myers, Pringle, Rose, Shuttleworth, Staveley and Sutcliffe

Substitute Members: Councillors Madeley, Mulligan and Solloway

Please note the following advice in advance of the meeting:

The Council's powers to hold remote meetings expired on 7 May 2021. Whilst the return to face to face meetings provides significant challenges, the Council has undertaken a great deal of work to ensure that face to face meetings are delivered in a COVID safe environment.

Due to social distancing measures, spaces for public attendance are limited and so registration is essential to secure a place.

Everyone who attends this meeting will be asked to wear a face covering, unless exempt.

Council staff, elected members and members of the public are urged to take advantage of the national 'next step safely' campaign and access a free, rapid lateral flow test in advance of the meeting:

<https://www.nhs.uk/conditions/coronavirus-covid-19/testing/> Please note that whilst this is advised, it is not a requirement for entry to the meeting.

Anyone displaying Covid-19 symptoms is asked not to attend.

For more information email committees@cravendc.gov.uk

AGENDA

1. **Apologies for Absence** – To receive any apologies for absence
2. **Confirmation of Minutes** – To confirm the minutes of the meeting held on 13 December 2021.
3. **Public Participation** – In the event that any questions/statements are received or members of the public attend, the public participation session will proceed for a period of up to fifteen minutes.

4. **Declarations of Interest** – All Members are invited to declare at this point any interests they have in items appearing on this agenda, including the nature of those interests.

(Note: Declarations should be in the form of:

a “**disclosable pecuniary interest**” under Appendix A to the Council's Code of Conduct, or “**other interests**” under Appendix B or under Paragraph 15 where a matter arises at the meeting which relates to a financial interest of a friend, relative or close associate.

A Member of Council who has a disclosable pecuniary interest must leave the room and not take part in the discussion or vote. When declaring interests under Appendix B or Paragraph 15 of the Code, Members must move to the public seating area, not vote, and speak only if members of the public are also allowed to speak at the meeting.)

5. **Playing Pitch Strategy Refresh 2021** - Report of the Strategic Manager for Planning and Regeneration. Attached.

Purpose of Report – To present the Playing Pitch Strategy (PPS) Refresh.

6. **Any other items** which the Chairman decides are urgent in accordance with Section 100B(4) of the Local Government Act, 1972.

7. **Date of Next Meeting** – To be agreed.

Agenda Contact Officer:

Vicky Davies, Senior Democratic Services Officer

E-mail: vdavies@cravendc.gov.uk

21st January 2022

CRAVEN SPATIAL PLANNING SUB-COMMITTEE

13 December 2021

Present – The Chairman (Councillor Staveley) and Councillors Pringle and Shuttleworth.

Officers – Interim Spatial Planning Manager, Planning Consultant, Planning Officer (Planning Policy Team), Senior Democratic Services Officer and Democratic Services and Scrutiny Officer.

Apologies for absence were received from Councillors Brockbank, Myers, Rose and Sutcliffe.

Start: 6.40pm

Finish: 7.36pm

Minutes for Report

CSP.195

**GOOD DESIGN SUPPLEMENTARY PLANNING DOCUMENT
AND RURAL WORKERS' DWELLINGS SUPPLEMENTARY
PLANNING DOCUMENT: REVISED DRAFTS FOR
CONSULTATION**

The Strategic Manager for Planning and Regeneration submitted a report presenting two revised draft Supplementary Planning Documents and associated documents regarding good design and rural workers' dwellings. The aim of the Supplementary Planning Documents was to add further details to the Craven Local Plan and parent policies, not to establish new policy.

Following the first round of consultation during which thirteen responses were received, the documents have been revised and are now subject to a second round of public consultation.

Members were disappointed with the number of respondents and also that Historic England had not made any comments. Officers stated that they would endeavour to engage more with the farming community and landowners and that they would work with Historic England's officer to encourage a response from them during the second consultation period.

Resolved – (1) That, in terms of the draft Good Design Supplementary Planning Document, the following is approved:

- a) the Consultation Statement set out at Appendix A to the report now submitted;
- b) the revised draft Supplementary Planning Document for public consultation as set out at Appendix B to the report now submitted, and to act as a material consideration when dealing with, and determining, relevant planning applications.
- c) the Strategic Environmental Assessment: Screening Report and the Habitat Regulations Assessment: Screening Report in Appendices C and D to the report now submitted.

(2) That, in terms of the draft Rural Workers' Dwellings Supplementary Planning Document, the following is approved:

- a) the Consultation Statement set out at Appendix E to the report now submitted;

- b) the revised draft Supplementary Planning Document for public consultation as set out at Appendix F to the report now submitted, and to act as a material consideration when dealing with, and determining, relevant planning applications.
- c) the Strategic Manager Environmental Assessment: Screening Report in Appendices G and H to the report now submitted.

CSP.196

**FLOOD RISK AND WATER MANAGEMENT
SUPPLEMENTARY PLANNING DOCUMENT AND GREEN
INFRASTRUCTURE AND BIODIVERSITY SUPPLEMENTARY
PLANNING DOCUMENT: DRAFTS FOR CONSULTATION**

The Strategic Manager for Planning and Regeneration submitted a report presenting two draft Supplementary Planning Documents (SPD's) on Flood Risk and Water Management and Green Infrastructure and Biodiversity. Members were asked to approve the attached drafts for a first period of consultation for four weeks' running from Tuesday 4th January 2022 until Tuesday 1st February 2022. This provided an opportunity for public participation, following which the drafts would be amended as necessary and submitted to a further meeting of the Sub-Committee.

The Craven Local Plan was adopted in November 2019. The Council's Local Development Scheme set out that the Council would produce and adopt a Flood Risk and Water Management SPD and a Green Infrastructure and Biodiversity SPD by the end of 2021. The documents added further detail to the policies in the development plan and could be used to provide further guidance for the development of specific sites or on particular issues such as design. Supplementary Planning Documents were capable of being a material consideration in planning decisions but were not part of the Development Plan.

Resolved – (1) That, the Flood Risk and Water Management Supplementary Planning Document and the Green Infrastructure and Biodiversity Supplementary Planning Document are approved for consultation as set out at Appendix A and Appendix B respectively to the report now submitted.

(2) That, delegated authority is given to the Strategic Manager for Planning and Regeneration to publish the draft Flood Risk and Water Management Supplementary Planning Document and the Green Infrastructure and Biodiversity Supplementary Planning Document for the first period of consultation for a four week period, running from Tuesday 4th January 2022 and Tuesday 1st February 2022.

CSP.197

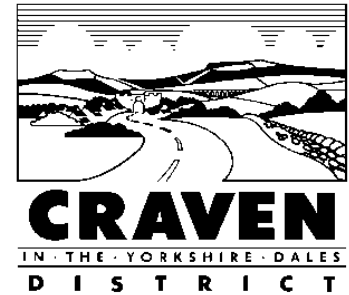
DATE OF NEXT MEETING

31st January 2022 at 6.30pm

Chairman.

**Craven Spatial Planning Sub Committee –
31st January 2022**

**Report Title: Playing Pitch Strategy Refresh
2021**



**Report of the Strategic Manager for Planning and
Regeneration**

Lead Member for Planning – Councillor Myers

Ward(s) affected: All wards wholly or partly outside the Yorkshire Dales National Park

1. Purpose of Report

- 1.1 To present the Playing Pitch Strategy (PPS) Refresh 2021.

2. Recommendations – Members are recommended to:

- 2.1 Accept the PPS Refresh, as set out at appendix A to this report, as an update to the original PPS prepared in 2016.

3. Report

- 3.1 Strategic Leisure were commissioned by the Council in 2015 and prepared a Playing Pitch Strategy (PPS), which was accepted into the local plan evidence base by Craven Spatial Planning Sub Committee on the 2nd March 2016. This PPS provided evidence for adopted Craven Local Plan policy INF3: Sport, Open Space & Recreational Facilities.
- 3.2 Paragraph 98 of the NPPF (2021) states that “*planning policies should be based on robust and up-to-date assessments of the need for open space, sport and recreation facilities (including quantitative or qualitative deficits or surpluses) and opportunities for new provision. Information gained from the assessments should be used to determine what open space, sport and recreational provision is needed, which plans should then seek to accommodate.*” The Sport England PPS Guidance is clear that a PPS should be a living document and remain robust. As a guide Sport England have a view that if a review and subsequent update has not taken place within 3 years the PPS strategy would be out of date. An update to the 2016 PPS is therefore required.
- 3.3 Since publication of the 2016 PPS, the Council has prepared Open Space, Playing Pitch and Sports Facility Progress Reports in 2017 and 2019. However, the impact of Covid 19 meant the 2020 Progress report was delayed and this has been incorporated in the Craven PPS Refresh study.
- 3.4 Given the fact that Craven have prepared Progress Reports in 2017 & 2019, the impact of Covid 19, the timescale for the Craven Local Plan Review to be completed by November 2024 and implications of Local Government

Reorganisation (new Local Plan for the new authority to be adopted by 2028), Sport England and the National Governing Bodies for Sport (NGB's) agreed that a refresh of the PPS was sufficient, rather than Craven undertaking a complete update of the 2016 PPS. Sport England and the NGBs have signed off the final PPS Refresh presented at Appendix A to this report.

Aim & Scope of the PPS Refresh

- 3.5 The study covers Football, Rugby Union, Rugby League (although there are no league clubs or pitches in the District), Cricket, Hockey, and Artificial Turf Pitches (ATP) which may provide a playing pitch specifically for Football, Rugby, Hockey, or a multi-purpose ATP surface.
- 3.6 The purpose of this refresh is to combine a review of progress on the priorities and action plan set out in the 2016 PPS whilst revisiting the supply of and demand for playing pitches to identify any new key issues and changes. As a result, the PPS refreshes the 2016 PPS priorities and an action plan has been produced for each sport for 2021 onwards.
- 3.7 The refresh includes the whole of the Craven District including the part of the district which falls within the Yorkshire Dales National Park Authority (YDNPA). The inclusion of YDNPA is an addition to the original PPS and has been agreed in discussion with YDNPA. As residents travel across the planning authority areas to access sports provision and given the value of collaborative working to deliver shared outcomes, a whole District view is more holistic.
- 3.8 Sports Clubs, Parish Councils, the Education sector and National Governing Bodies for each sport were consulted to inform the PPS refresh.
- 3.9 Impact of Covid on the PPS Refresh
The Covid 19 pandemic has impacted on grass roots sport with significant periods of time when participation has not been possible or being undertaken in a restricted manner. The impact for clubs on their membership, participant numbers and number of teams is unknown, for some clubs numbers may increase, whilst others may stay the same or decrease. Therefore, the lifespan for the refresh will enable Craven to see the outcomes of return to play and the impact on demand. The annual progress reports subsequently undertaken following the refresh will continue to monitor the actions and priorities identified and track the impact of Covid 19 on sports over time.
- 3.10 PPS Refresh: Key Findings by Sport
Football:
- Enhancements have been made to a number of pitches since 2016 (details provided in Table 9 on pages 29-35 of Appendix A)
 - Overall there is sufficient capacity across the district of grass pitches and a shortfall of one full size 3G AGP football pitch (details provided on pages 48-59 of Appendix A).
 - A recommended Action Plan is set out at table 15 on page 50 of Appendix A.

Cricket:

- Enhancements have been made to a number of pitches since 2016 (details provided in Table 19 on page 62-67 of Appendix A)
- Overall there is sufficient capacity across the district of cricket pitches. The lack of male and female changing accommodation limits the growth of cricket. (see key findings for cricket on pages 71 & 72 of Appendix A)
- A recommended Action Plan is set out at table 23 on page 72-77 of appendix A.

Rugby Union:

- Enhancements have been made to a number of pitches since 2016 (see table 28 page 83-89 of Appendix A).
- The supply and demand results indicate that overall there is insufficient supply across the district of rugby pitches (details provided on pages 92-93 of Appendix A).
- A recommended Action Plan is set out at table 32 on page 94-98 of appendix A.

Hockey:

- Consultation with England Hockey (EH) has indicated that Craven does not have any competitive hockey clubs. There is no significant unmet demand for hockey and there is sufficient supply of suitable artificial grass pitch at Giggleswick School (see page 100 of Appendix A).

3.11 Overall Key Findings

Section 8, starting on page 101 of the PPS Refresh sets out:

- the key overall findings, detailing progress made on several actions identified in the 2016 PPS.
- a summary of the key supply and demand balance for Football, Cricket, Rugby Union grass pitches.
- a summary of the key findings relating to the area of the district which lies within the YDNPA (Grassington & Threshfield area).
- that the projected population change and identified housing development through to 2032, identified in the Craven Local Plan, will not impact on the future demand for pitches and supports that supply is sufficient.
- the team generate rates overall indicate there will be little change in the number of teams by 2032. However, the impact on Covid 19 and post pandemic participation levels are yet to be experienced.
- the NGB's do not expect there to be a decrease in the demand for pitches.
- there is no evidence to support that there is a surplus of pitches.

3.12 Recommendations

Section 9, starting on page 106 of Appendix A sets out the key recommendations, with the emphasis remaining as in the 2016 PPS on improving the quality rather than the quantity of provision given there is sufficient provision for the current and future levels of football and cricket. There are proposed developments in hand which, if achieved, will help address the deficiencies identified for rugby.

3.13 Use of the PPS Refresh

This updated evidence can be used by multiple Council teams and other stakeholders for a wide range of future projects, including:

- use of the PPS refresh as evidence to implement adopted local plan policy INF3: Sport, Open Space & Recreation Facilities in negotiating with developers to achieve planning gain (Section 106 funds) to deliver the PPS priorities and actions.
- forming a key piece of evidence to inform the any Craven Local Plan update and development of the new Local Plan for the North Yorkshire area following Local Government Reorganisation in 2023.
- use by the District Council's Sports Development Officer and other Council Officers, in partnership with landowners, clubs, facility owners etc to deliver recommendations and actions set out within the PPS Refresh, which may include supporting bids for funding for projects.

4. **Financial and Value for Money Implications**

- 4.1 Lewis Leisure Consultancy has prepared the PPS Refresh at a cost of £4,275.00. Costs associated with preparation of the PPS Refresh can be met within this year's Spatial Planning Team's budget.

5. **Legal Implications**

- 5.1 None arising directly from content of this report. The review of the Craven Local Plan is a statutory obligation under the provisions of the Planning and Compulsory Purchase Act 2004 and this updated evidence will inform that review.

6. **Contribution to Council Priorities**

- 6.1 The production of the PPS refresh will contribute to the Council's priority to create sustainable communities across Craven.
- 6.2 **Impact on the declared Climate Emergency:** The Local Plan supports a number of themes and actions included in the Council's Climate Emergency Strategic Plan, including the themes of carbon neutral development, travel and transportation, land and nature and carbon neutral energy & low carbon waste. This PPS refresh will inform the Local Plan review and any necessary subsequent update to adopted local plan policy INF3: Sport, Open Space & Recreational Facilities.

7. **Risk Management**

- 7.1 See report.
- 7.2 **Chief Finance Officer (s151 Officer) Statement:** The financial implications relating to the PPS Refresh are set out in section 4 of this report. Any wider cost implications arising in future from a policy change or change in approach would need to be considered as part of a separate decision.

7.3 **Monitoring Officer Statement:** The recommendations in the report are within the legal powers of the Council.

8. Equality Impact Analysis

8.1 No new policy or procedure is proposed in this report which would give rise to a requirement for an Equality Impact Assessment.

9. Consultations with Others

9.1 Legal Services, Financial Services.

10. Background Documents

10.1 None

11. Appendices

- Appendix A – Playing Pitch Strategy Refresh 2021

12. Author of the Report

Ruth Parker

rparker@cravendcgov.uk

Note: Members are invited to contact the author in advance of the meeting with any detailed queries or questions.



Craven District Council

Playing Pitch Strategy Refresh

2021

Presented to Craven Spatial Planning Sub Committee 31st Jan 2022

Table of Contents

1. Introduction	4
Purpose of the Craven PPS Refresh 2021	5
Scope of the Craven PPS Refresh 2021-2024	5
2. Methodology	6
3. Context	11
Population and Demographics	11
Strategic Review and Documentation	16
4. Football	24
Consultation	24
Supply	25
Demand	41
Supply and Demand Balance	45
Football and Artificial Grass Pitches (AGP)	45
Key Findings for Football	48
Recommended Action Plan	50
5. Cricket	57
Consultation	57
Supply	58
Demand	67
Supply and Demand Balance	71

Key Findings for Cricket	71
Recommended Action Plan	72
6. Rugby Union	78
Consultation	79
Supply	79
Demand	90
Supply and Demand Balance	92
Key Findings for Rugby	92
Recommended Action Plan	93
 Rugby League	 98
7. Hockey	99
Consultation	99
Supply	99
Demand	100
Supply and Demand Balance	100
Key Findings for Hockey	100
8. Key Findings Overall	101
9. Recommendations	106

1. Introduction

- 1.1 The Craven Playing Pitch Strategy (PPS) was adopted in 2016 and was developed using the Sport England PPS Guidance. The objectives of the Craven PPS are:
- Engage with Sport England, North Yorkshire Sport, and the relevant National Governing Bodies (NGB's) for sport and use the national PPS methodology to provide the project with a structure proven across the rest of England.
 - Provide a robust evidence base that can be used by multiple Council units and other stakeholders for a wide range of future projects.
 - Gather a representative evidence base, by achieving a high response rate from the surveys sent to clubs, schools, and parish councils/community organisations.
 - Update the Council's comprehensive GIS database, showing the location of playing pitches in Craven.
 - Identify cross boundary NGB issues, the nature and location of any overuse, unmet demand, and spare capacity for play across all pitch types and sports including all elements of current and future demand.
 - Establish clear, prioritised, specific, and achievable recommendations and actions to address the key issues around pitch provision and participation.
- 1.2 Section E of the Sport England's (SE) Planning Pitch Strategy Guidance: An approach to developing and delivering a playing pitch strategy (Oct 2013) talks about implementing and delivering the strategy and keeping the strategy up to date and robust. Craven District Council have been proactive in delivering the priorities within the current PPS through:
- Providing the evidence base for the Local Plan during the formulation of local plan policy INF3. Application of this now adopted policy. is used to achieve planning gain (Section 106 funds) to deliver the PPS priorities and actions.
 - Helping to inform sports development planning and the Council's work with local sports clubs and organisations who deliver sport and physical activity.
 - Providing the evidence to support external funding applications to grant making bodies.
 - Providing the base from which the coordination of resources and investment decisions can be made by the Council, partners, and sports clubs.
 - Craven has prepared Open Space, Playing Pitch and Built Facilities progress reports.

Purpose of the Craven PPS Refresh 2021

- 1.3 The purpose of this refresh is to combine a review of progress on the current priorities and action plan-whilest revisiting the supply and demand to identify any new key issues and changes. As a result, the current priorities will be refreshed and an action plan produced for 2021 onwards. This updated evidence can be used by multiple Council teams and other stakeholders for a wide range of future projects, including forming a key piece of evidence to inform the development of the new Local Plan for the North Yorkshire area following Local Government Reorganisation in 2023.
- 1.4 The SE PPS Guidance is clear that a PPS should be a living document and remain robust. Craven has prepared Open Space, Playing Pitch and Sports Facility Annual Progress Reports. The last report was published in summer 2019, however Covid 19 meant the 2020 review was delayed and a review of progress will be incorporated within this Craven PPS Refresh study.
- 1.5 The Covid 19 pandemic has impacted on grass roots sport with significant periods of time when participation has not been possible or being undertaken in a restricted manner under the return to play guidance from NGB's. The impact for clubs on their membership, participants numbers and number of teams is unknown, for some clubs numbers may increase, whilst others may stay the same or decrease. Therefore, the lifespan for the refresh will enable Craven to see the outcomes of return to play and the impact on demand. The annual progress reports subsequently undertaken following the refresh will continue to monitor the actions and priorities identified and track the impact of Covid 19 on sports over time.
- 1.6 As a guide Sport England and the NGB's have a view that if a review and subsequent update has not taken place within 3 years the PPS strategy would be out of date. The SE PPS Guidance (2013) states: *'As a guide, if no review and subsequent update has been carried out within three years of the PPS being signed off by the steering group, then Sport England and the NGBs would consider the PPS and the information on which it is based to be out of date.'*
- 1.7 Sport England and the NGB's were consulted in 2020 on a proposed refresh rather than Craven undertaking a complete update of the 2016 PPS. There was agreement for this approach that given the fact that Craven have prepared Annual Progress Reports, the impact of Covid 19 and the timescale for the formal Local Plan Review to be completed by November 2024, which will be replaced by development of a new Local Plan for North Yorkshire to completed by 2028.

Scope of the Craven PPS Refresh 2021-2024

- 1.8 The refresh will include the whole of the Craven District including the part of the district which falls within the Yorkshire Dales National Park Authority (YDNPA). The inclusion of YDNPA is an addition to the original PPS and has been agreed in discussion with YDNPA.

As residents travel across the planning authority areas to access sports provision and the value of collaborative working to deliver shared outcomes, a whole District view is more holistic.

- 1.9 The study will cover Football, Rugby Union, Rugby League, Cricket, Hockey, and Artificial Turf Pitches (ATP) which provide a playing pitch specifically for Football, Rugby, Hockey, or a multi-purpose ATP surface.
- 1.10 The baseline data within the current PPS will be reviewed. The focus for supply will be on the quality of the provision and changes to quantity will be updated. There will be less focus on demand data given the yet unknown impact on clubs of Covid 19, the study will consider any significant projected population and demographic changes and will consult with clubs on their thoughts on the impact of Covid on participation.
- 1.11 Consultation will be undertaken with sports clubs, parish councils who are responsible for playing pitches and education sites with community accessible pitches to determine what changes have taken place since 2016 and their views of needs, demands and aspirations looking forward.

2. Methodology

- 2.1 The Methodology has been developed with reference to the Sport England Playing Pitch Strategy Guidance (2013) and Sport England Planning for Sport Guidance (2019) [Planning for sport | Sport England](#). The methodology follows the guidance's five stages but the level of detailed work of the 10 steps has been adapted to reflect the tailored approach being taken in Craven to refresh the current PPS from 2016 rather than develop a completely new strategy.
- 2.2 The Sport England PPS stages and steps in full are:

Stage A: Prepare and tailor the approach (Step 1)
Stage B: Gather information and views on the supply of and demand for provision (Steps 2 & 3)
Stage C: Assess the supply and demand information and views (Steps 4, 5 & 6)
Stage D: Develop the strategy (Steps 7 & 8)
Stage E: Deliver the strategy and keep it robust and up to date (Steps 9 & 10)



2.3 The methodology for the Craven PPS refresh is outlined in table 1 below and has been developed using the Sport England PPS Check list

Table 1: Craven Refresh Methodology

Stage	Actions	Rationale
A	Prepare and Tailor Approach	
1	Sport England and NGB's have been engaged with in the latter part of 2020 and there was a consensus agreement that a refresh would be the best approach given the impact of Covid 19 on grass roots sport.	Section 1 paragraph 1.3
2	The PPS Study area will include the Craven District and the Yorkshire Dales National Park Authority (YDNPA) areas which lie within the Craven District. The Refresh will continue to consider the North, Mid and South sub areas.	This will provide a holistic perspective for sport. Given residents who live within the YDNPA access provision within the District Council planning area and vice versa.
3	Senior Officer and Political engagement and sign off for the final Craven PPS Refresh. The Craven Spatial Planning Sub Committee has responsibility for approving local plan evidence base work and updates.	Ensures that key decision takers are on board and the PPS refresh sits within wider strategic and corporate plans.
4	Working group will comprise of CDC officers from Spatial Planning and Sports Development, YDNPA Head of Sustainable Development.	To ensure a balance of skills, expertise, and knowledge in relation to the District, YDNPA, Spatial Planning and overall Council Policy
B	Gather Supply and Demand Information	
1	Cross reference the Active Places Power Audit report with the current PPS supply information to identify any changes. Desk top study. (Note for Football – cross reference with FA Local Football Plan 2018)	Ensure that the most up to date supply information is being used for the assessment of supply.
2	Undertake a review of the progress made against actions identified in the 2016 PPS. The progress report produced in 2019 will provide a baseline. (Desktop study). (Note for Football – cross reference with FA Local Football Plan 2018)	To support assessments and priorities
3	Identify if any improvements have been undertaken on sites other than those identified within the current PPS as priorities or strategic sites. Undertake non-technical quality assessment using NGB form. (Desktop study /Consultation/Site Visit)	To support assessments and priorities
4	Identify any sites which are no longer operational and why? (Desktop study /Consultation)	To support assessments and priorities

5	Identify any new sites since 2016. Undertake a non-technical quality site assessment using NGB form. (Desktop study/Consultation/Site visit)	To support assessments and priorities
6	Population projections in line with Local Plan through to 2032. Are there any significant projected changes since the 2016 PPS? Are there any significant projected changes in housing growth since 2016 PPS?	Need to make a judgement whether there are any changes significant enough to impact on demand. If not then assume that the demand remains as of 2016.
7	Consultation Consultation needs to be undertaken with the organisations identified below. This will both ask about quality and demand using an online survey. The survey will be based on the sample NGB Club Survey's which form part of the SE Guidance. There will be a need for more detailed consultation face to face/telephone with certain clubs as identified below.	To support assessments and priorities. To ensure that local knowledge informs the Craven PPS Refresh.
7a	Sports Club Consultation Consult with sports clubs on membership/team numbers prior to Covid 19 how they expected their club to grow or decline in numbers if Covid 19 had not been a factor. Given Covid 19 do they expect membership/teams to reduce/remain the same/increase once play can return? Consult with clubs on their perception of the quality and needs of the provision of pitches and ancillary facilities. Online survey with individual follow up as appropriate.	Due to Covid 19 and the impact on grass roots sport, the ability for clubs to be confident about memberships/teams in the future will be difficult for them to assess. Therefore, need to assume that from 2021-2024 for some clubs it may take this time to build back up. Likely, that once assessed demand will remain as of 2016.
7b	Parish Council Consultation Consult with Parish Councils who are responsible for playing pitches on the quality of the pitches and ancillary facilities, usage. Online survey with individual follow up as appropriate.	To support assessments and priorities
7c	Educational Sites	To support assessments and priorities

	Consult with educational sites who have pitches available for community use on the quality of the pitches and ancillary facilities, usage. Online survey with individual follow up as appropriate.	
7d	<p>Known key lines of enquiry, others may become apparent when undertaking the refresh research. Current identified consultees are:</p> <ul style="list-style-type: none"> • Clarity on Giggleswick School Rugby Pitch developments • North Ribblesdale Rugby Club development plans and needs. • Bridge End/Settle United/ATP in Mid Craven needs and demand. • Bentham Playing Fields Community Group aspirations. • Skipton Cricket Club – Community Club House and Changing Development • Sandylands ATP – capacity, usage, and demand • ATP on educational sites – capacity, usage, and demand 	To support assessments and priorities.
e	<p>NGB</p> <p>The NGBs provided updates and information by answering questions in relation to progress, lessons learnt, changes to sites/provision, specific sports development, new opportunities as part of the consultation to approve the approach to undertake the refresh.</p>	<p>To support assessments and priorities.</p> <p>Stage completed.</p>
7f	YDNPA consultation	To support assessments and priorities and synergy with the YDNPA Local Plan.
C	Assess the Supply, Demand and Consultation Information	
1	Collate the current supply and demand information from desk top studies and consultation. Identify any significant changes since 2016. Use this information to identify key findings, emerging issues, new priorities.	Forms the base information from which recommendations and an action plan can be developed.
2	Provide NGB's with the opportunity to comment on the key findings, emerging issues, and new priorities.	Provides an external check and challenge. Opportunity for any additional NGB Strategic Planning to inform the action plans.
D	Develop the Craven PPS Refresh 2021	

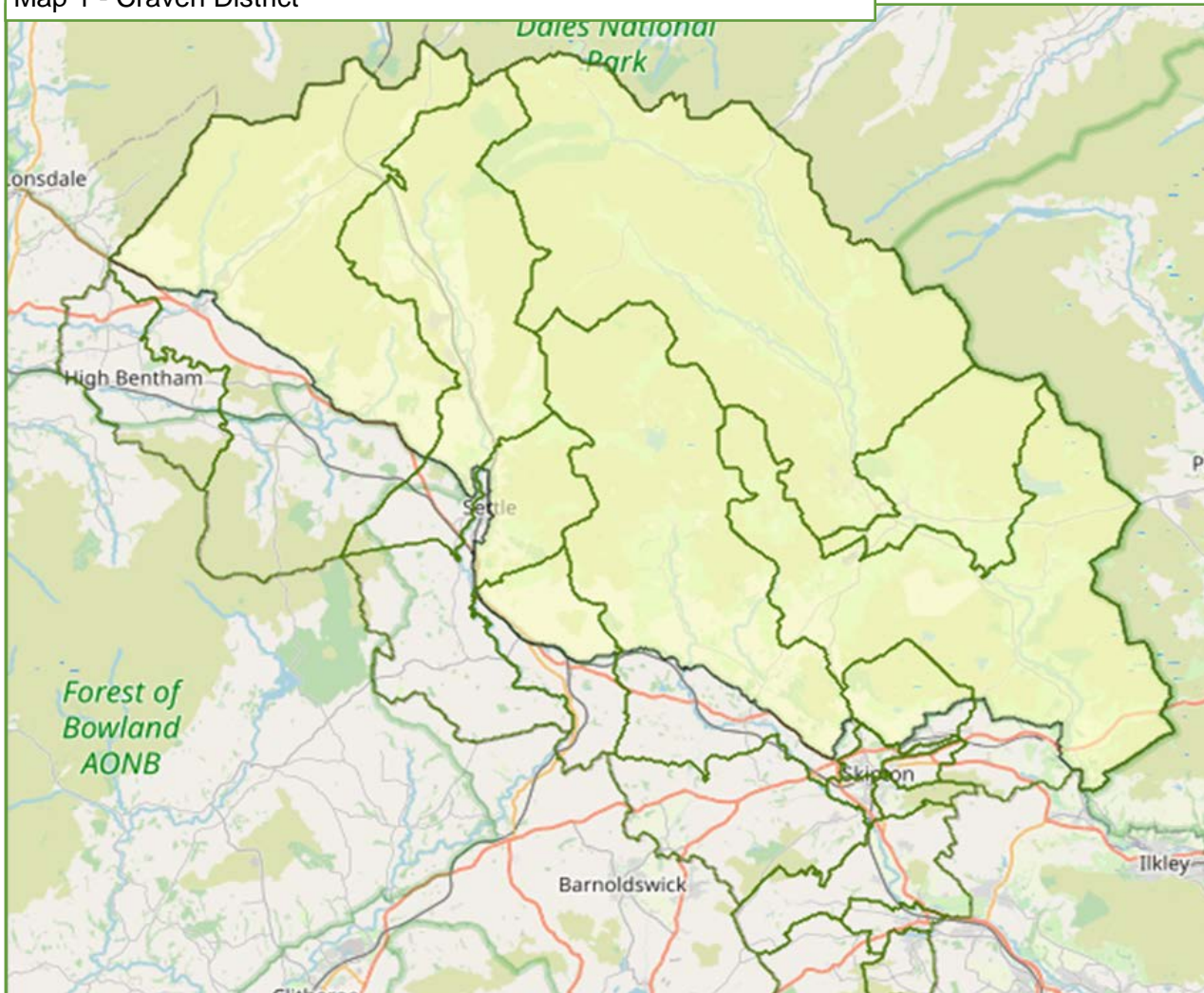
1	Ensure that the recommendations and actions reflect the purpose and drivers of the document.	
2	Recommendations and actions should be precise and specific to enable them to be achievable and provide a clear evidence base for funding such as S106.	Evidence base which will be robust and fit with the Local Plan and planning decisions. Support external organisations to secure funding and investment.
3	Share the proposed recommendations and actions with relevant parties and consultees.	Ensure understanding and buy in.
4	Formal process within Craven District Council (and YDNPA) to accept the Craven PPS Refresh 2021 as updated evidence to inform development of new Local Plan for the North Yorkshire area following Local Government Reorganisation in 2023.	Embedded within organisations at a strategic level.

3. Context

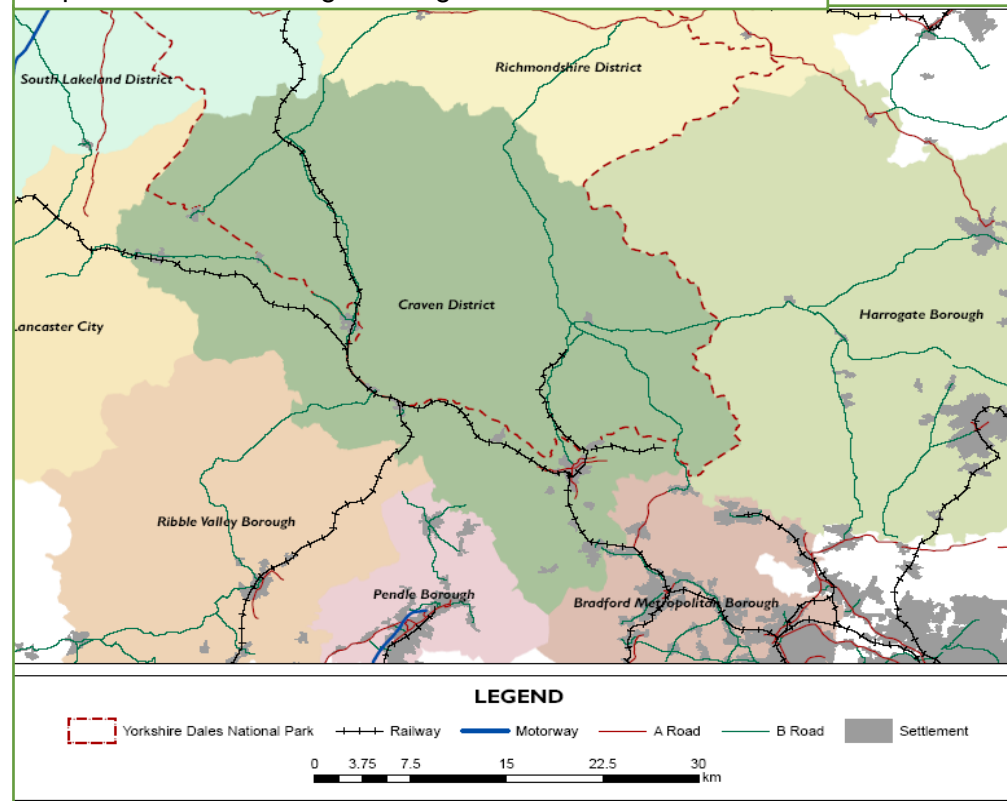
Population and Demographics

- 3.1 The geographic area of the PPS Refresh includes the YDNPA which lies within the Craven District. The maps below show the areas with the green lines indicating the district and ward boundaries and the yellow shaded area those which lie within the YDNPA area. Map one below shows the boundary of Craven District in addition to ward boundaries within the district. The yellow shaded area is part of the Craven District that lies within the YDNPA area. Map two shows the Craven District in the context of neighbouring local authorities and key transport links.
- 3.2 It should be noted that as from 2023 Local Government reorganisation will be implemented and the current Craven District Council will no longer exist. North Yorkshire County Council and the six district councils will be disbanded and a new unitary North Yorkshire Council will take over. The transition period begins with local elections in May 2022.

Map 1 - Craven District



Map 2- Craven and neighbouring local authorities



- 3.3 The ONS Sub National Population estimates 2018 have been used for the Refresh with projected population figures for 2021 and 2032 as the baseline for the Refresh. The projected overall population change shows that there will be a decrease in the population below 34 years of age and an increase in all other age groups, most notably in the 60-74 year age groups. The population within the YDNPA area is projected to decline in all age groups. This will have an impact on the number of residents who are projected to be active and participating in sport. Table 2 below provides a comparison of the population projections.

Table 2: Population Projection Comparisons

	Projected 2032 Population Breakdown from 2012-Based Projections in Previous PPS			Projected 2032 Population Breakdown from ONS 2018 to 2032 Population Projections for Craven (including YDNP)			Difference as at 2021 in population projections since 2016 PPS
Age Group	Total	Male	Female	Total	Male	Female	Difference total in population projections since 2016 PPS
0 to 4	2,436	1,246	1,190	2,302	1,176	1,126	-134
5 to 9	2,665	1,368	1,297	2,544	1,293	1,251	-121
10 to 14	2,889	1,479	1,410	2,812	1,455	1,358	-77
15 to 19	2,819	1,481	1,338	2,802	1,516	1,287	-17
20 to 24	2,101	1,145	956	2,056	1,089	967	-45
25 to 29	2,365	1,219	1,146	2,342	1,179	1,163	-23
30 to 34	2,479	1,249	1,230	2,426	1,223	1,204	-53
35 to 39	2,811	1,403	1,408	2,859	1,385	1,474	48
40 to 44	3,055	1,494	1,561	3,347	1,603	1,744	292
45 to 49	2,986	1,430	1,556	3,437	1,621	1,817	451
50 to 54	3,001	1,437	1,564	3,667	1,763	1,904	666
55 to 59	3,057	1,436	1,621	3,812	1,830	1,983	755
60 to 64	3,765	1,773	1,992	4,887	2,352	2,534	1,122
65 to 69	3,933	1,854	2,079	5,053	2,418	2,636	1,120
70 to 74	3,583	1,691	1,892	4,593	2,232	2,361	1,010
75 to 79	3,135	1,495	1,640	3,948	1,952	1,995	813
80 to 84	2,743	1,225	1,518	3,228	1,492	1,736	485
85 to 89	2,006	845	1,161	2,173	887	1,286	167
90 and over	1,488	550	938	1,054	343	711	-434
TOTALS	53,317	25,820	27,497	59,341	28,807	30,534	6,024

- 3.4 The population changes have a direct impact on the active age group population figures for each sport in the PPS. A minor increase in the female youth rugby age group of 13-18 years, senior football 11 v 11 both male and female age groups 16-45 years and male senior rugby union age 19-45 years all indicate a 1% increase in the active age groups. All other active age groups for sports indicate a decrease of between 3% and 16% in the active age groups. The non-active age group of over 55 years increases by 15%. Table 3 below provides the detailed comparison of the active age groups.

Table 3: Active Age Group Population Projection Comparisons

Based on the 2021 point of the ONS 2018 Based Sub-National Population Projections for Craven (including YDNP)					Based on the 2032 point of the ONS 2018 Based Sub-National Population Projections for Craven (including YDNP)					Percentage Change 2021 - 2032		
Active Age Group	Sport	Male	Female	Mixed	Active Age Group	Sport	Male	Female	Mixed	Male	Female	Mixed
0-5 years	Non active			2,882	0-5 years	Non active			2,787			-3%
6-7 years	Football Mini Soccer 5v5			1,106	6-7 years	Football Mini Soccer 5v5			1,010			-9%
6-10 years	Hockey			2,909	6-10 years	Hockey			2,599			-11%
8-9 years	Football Mini Soccer 7v7			1,197	8-9 years	Football Mini Soccer 7v7			1,048			-12%
7-12 years	Rugby Union Mini/Midi			3,603	7-12 years	Rugby Union Mini/Midi			3,208			-11%
7-18 years	Cricket Junior	3832	3462		7-18 years	Cricket Junior	3580	3279		-7%	-5%	
10-11 years	Football Youth 9v9	665	587		10-11 years	Football Youth 9v9	556	534		-16%	-9%	
11-15 years	Hockey Junior	1,679	1,481		11-15 years	Hockey Junior	1,491	1,379		-11%	-7%	
12-15 years	Football Youth 11v11	1338	1176		12-15 years	Football Youth 11v11	1208	1112		-10%	-5%	
13-18 years	Rugby Union Youth	1,999	1,691		13-18 years	Rugby Union Youth	1,942	1,709		-3%	1%	
16-55 years	Hockey Senior	11,825	12,138		16-55 years	Hockey Senior	11,406	11,634		-4%	-4%	
16-45 years	Football Senior 11v11	7,895	7,821		16-45 years	Football Senior 11v11	8,010	7,896		1%	1%	
18-55 years	Cricket Open Age	11,162	11,612		18-55 years	Cricket Open Age	10,704	11,054		-4%	-5%	
19-45 years	Rugby Union Senior	6,930	7,015		19-45 years	Rugby Union Senior	6,985	7,033		1%	0%	
Over 55 years (56 yrs onwards)	Non active			24,458	Over 55 years (56 yrs onwards)	Non active			28,045			15%

- 3.5 The housing needs and potential development in the Craven District including the YDNPA area identifies a need for 4,840 dwellings in the period 2012 -2032. The Craven Local Plan makes for provision of a minimum of 4,600 net additional dwellings in Craven outside of

the YDNPA area over the period April 2012 to March 2032. This equates to an annual average housing requirement of 230 net additional dwellings. It leaves a residual need for 240 dwellings to be provided from within the Yorkshire Dales National Park, which equates to 12 per annum.

- 3.6 Between 1st April 2012 and 31st March 2021, a net total of 1,614 new houses have been built in Craven District outside of the National Park. Over the same period a further 139 additional dwellings have been completed within the part of Craven District inside the National Park. Therefore, a total of 1,753 dwellings have been built within Craven District (including the YDNP) at March 2021, leaving a need for 3,088 dwellings up to 2032.
- 3.7 Policy SP4 of the 2019 Craven Local Plan sets out a guideline for the distribution of new homes across the district, directing the largest proportions to Skipton, Settle and Bentham. Policy SP3 of the 2016 Yorkshire Dales Local Plan identifies Grassington/Threshfield as the largest service centre wholly contained within the Craven portion of the National Park, although other service centres, such as Settle, Giggleswick and Ingleton, are bisected by the National Park boundary.

Strategic Review and Documentation

- 3.8 Since the 2016 PPS a number of the strategic documents have been updated.

Table 4: Comparisons of strategic documents 2016 to 2021

PPS 2016 Strategies and Documents	PPS Refresh 2021 updated documents
National Planning Policy Framework (NPPF)	<p>NPPF was revised in 2021. There has been no significant amendments to the wording of the Open Space and Recreation section within chapter 8: Promoting Healthy and Safe Communities, as set out in paragraphs 98 and 99 of the NPPF.</p> <p>In terms of paragraph 98 of the NPPF, the aim of this PPS refresh is to keep the assessment of need for open space, sport and recreation facilities up to date and robust, in line with the NPPF.</p> <p><i>98. Access to a network of high quality open spaces and opportunities for sport and physical activity is important for the health and well-being of communities, and can deliver wider benefits for nature and support efforts to address climate change. Planning policies should be based on robust and up-to-date assessments of the need for open space, sport, and recreation facilities (including quantitative or</i></p>

	<p><i>qualitative deficits or surpluses) and opportunities for new provision. Information gained from the assessments should be used to determine what open space, sport and recreational provision is needed, which plans should then seek to accommodate.</i></p> <p>The adopted local plan policy INF3 reflects paragraph 99 of the NPPF</p> <p><i>99. Existing open space, sports and recreational buildings and land, including playing fields, should not be built on unless:</i></p> <p><i>a) an assessment has been undertaken which has clearly shown the open space, buildings or land to be surplus to requirements; or</i></p> <p><i>b) the loss resulting from the proposed development would be replaced by equivalent or better provision in terms of quantity and quality in a suitable location; or</i></p> <p><i>c) the development is for alternative sports and recreational provision, the benefits of which clearly outweigh the loss of the current or former use.</i></p> <p>Policy INF3 aims to promote Craven's health, wellbeing, and quality through growth by safeguarding and improving sport, open space and built sports facilities. The policy supports the delivery of standards, recommendations and actions set out in the PPS, Open Space Assessment and Built Sports Facilities Strategy 2016 and any subsequent updates by safeguarding and improving sport, open space and built sports facilities. The policy requires developers contributions to be made towards new or improved spaces and facilities, in specific circumstances, by looking at existing quality and quantity deficiencies that are identified in the PPS and any subsequent updates. The policy reflects the provision of the NPPF.</p>
A New Strategy for an Active Nation : Sporting Future 2015	<p>Superseded in 2021 by Sport England Uniting Movement – 10 year vision to transform lives and communities through sport and physical activity. There are five big issues identified:</p> <ul style="list-style-type: none"> ● Recover and Reinvent ● Connecting Communities ● Positive Experiences for children and young people

	<ul style="list-style-type: none"> • Connecting with health and wellbeing • Active environments <p>The vision- Imagine a nation of more equal, inclusive, and connected communities. A country where people live happier, healthier, and more fulfilled lives.</p> <p>The Mission - We're here to invest in sport and physical activity to make it a normal part of life for everyone in England, regardless of who you are.</p>
North Yorkshire Community Plan 2014-2017	<p>North Yorkshire Council Plan 2021-2025. The plan identifies five ambitions for 2025:</p> <ul style="list-style-type: none"> • Leading for North Yorkshire • Every child and young person has the best possible start in life; • Every adult has a longer, healthier, and independent life. • North Yorkshire is a place with a strong economy and a commitment to sustainable growth, and • Innovative and forward thinking Council
Craven District Council Plan 2015-2018	<p>Craven Council Plan for 2020 and Beyond</p> <p>The Council's Vision <i>For Craven to be a prosperous place with strong and vibrant communities, where all residents enjoy a good quality of life.</i></p> <p>The Council's Priorities for 2020 onwards Carbon Neutral Craven Facilitating economic growth in a low carbon Craven</p> <p>Supporting the wellbeing of our communities Developing vibrant, connected, and healthy communities</p> <p>Attracting and retaining younger people Creating a district that attracts people of working age to live and work</p>

	<p>Financial sustainability Ensuring a self-sustainable Council</p>
Not relevant in 2016	<p>The Yorkshire Dales National Park Management Plan 2019-2024</p> <p>The plan contains 49 specific objectives that we are working together to achieve now. An ambitious vision for what the National Park will be like by 2040. The vision to 2040 includes the objective to:</p> <p><i>Be home to strong, self-reliant, and balanced communities with good access to the services they need.</i></p>
New Local Plan 2014 ongoing (Draft)	<p>Adopted Craven Local Plan 2012- 2032</p> <p>Sets out a spatial strategy and polices for change, development, and conservation in Craven District outside the YDNP for the period 2012-2032.</p> <p>The PPS 2016 informed Policy INF3 – Sport, Open Space and Built Facilities. Policy INF3 aims to promote Craven’s health, wellbeing and quality of life by safeguarding and improving sport, open space and built sports facilities.</p> <p>The policy will support, subject to meeting other relevant local plan policies, the delivery of the standards, recommendations and actions set out in the PPS, Open Space Assessment and the Built Sports Facilities Strategy 2016 and any subsequent updates. Priority will be given where the greatest deficiency exists in terms of the type of open space, pitches or facilities, as identified in the study and any subsequent updates.</p> <p>The policy sets out the criteria for developer contributions under section 106 agreements to new or improved provision.</p>
Not relevant in 2016	<p>Yorkshire Dales National Park Local Plan 2015-2030</p> <p>Policy C9 – Existing Community Facilities; aims to protect vital community facilities which includes sports pitches, play and recreational areas, public gardens and greens, sports pavilions, gymnasiums and changing facilities.</p>

	<p>Policy C10- New and Improved Community Facilities; aims to support new and improved community facilities that meet the needs of local residents.</p> <p>Policy C13 – Important open space; aims to retain the contribution that important open spaces make to amenity, recreation and the historical character of towns and villages. For spaces designated because of their sporting or recreational value, any loss of or significant harm to their qualities and functions will only be permitted if it can be demonstrated that the space is no longer needed, or a suitably located replacement of at least equivalent standard is secured.</p>
<p>North Yorkshire Health and Wellbeing Strategy 2013 -2018</p> <p>Joint Strategic Needs Assessment – Annual Update 2015</p>	<p>Joint Health and Wellbeing Strategy 2015-2020.</p> <p>Delivered through the North Yorkshire Health and Wellbeing Board and informed by the Joint Strategic Needs Assessment.</p> <p>Priorities are:</p> <ul style="list-style-type: none"> • Connected Communities • Start Well • Live Well • Age Well • Dying well
<p>Young and Yorkshire – Children’s Plan 2014-17</p>	<p>Young and Yorkshire 2 Plan</p> <p>Written by the North Yorkshire Children’s Trust. The plan covers:</p> <ul style="list-style-type: none"> • Our vision and our approach to all we do for children and young people; • The key considerations we will use to test we are truly making a difference; • The outcomes we want to achieve for all children and young people; and priorities and actions. <p>Outcome is for all children and young people to be happy, healthy, and achieving.</p>

- 3.9 The value of participation in sport and physical activity outlined in the 2016 PPS paragraph 2.4.4-2.4.6 remain valid. The Covid 19 pandemic of 2020-2021 has clearly highlighted how valuable sport and physical activity has been to maintain both physical and mental health. Sport England undertook a series of studies during the pandemic which tracked participation levels and attitudes and motivations in relation to being active. It was clear that more people were engaged in being active in an outdoor environment. A trend which is likely to continue for some time as individual confidence grows to return to pre pandemic activity.
- 3.10 The Active People Survey has been superseded by the Active Lives Survey. The current participation data for the Craven District is detailed in the tables below for adults and children and young people. In general terms Craven performs better when compared to the national and North Yorkshire Active Partnership area. It should be noted in the academic year 19/20 which was affected by school closures during the Covid 19 pandemic children and young people's participation levels in Craven were impacted and in general they were being less active.

Table 5: Participation Levels- Sport England Active Lives Survey

	Better than North Yorkshire and England
	Approximately In line with England/North Yorkshire
	Worse than North Yorkshire and England

Adult Participation Levels

Inactive: less than 30 minutes a week	May 18-19	Nov 18-19	May 19-20
England (Nation)	24.80%	24.60%	25.50%
North Yorkshire Active Partnership	20.70%	20.70%	22.40%
Craven Local Authority Area	19.7%	19%	16.8%
Fairly active: 30-149 minutes per week	May 18-19	Nov 18-19	May 19-20
England (Nation)	12.00%	12.20%	11.70%
North Yorkshire Active Partnership	11.60%	11.50%	12.10%
Craven Local Authority Area	10.2%	9.2%	14.3%
Active: at least 150 minutes a week	May 18-19	Nov 18-19	May 19-20
England (Nation)	63.20%	63.30%	62.80%
North Yorkshire Active Partnership	67.60%	67.70%	65.50%
Craven Local Authority Area	70.1%	71.8%	68.9%

Active Lives Children and Young People Survey Outside school once a week or more by activity									
	Academic Year 19/20			Academic Year 18/19			Academic Year 17/18		
	England (Nation)	North Yorkshire Active Partnership	Craven Local Authority	England (Nation)	North Yorkshire Active Partnership	Craven Local Authority	England (Nation)	North Yorkshire Active Partnership	Craven Local Authority
Less Active- less than average of 30 minutes a day	31.3%	30.5%	41.8%	29.0%	30.7%	26.2%	32.9%	28.9%	32.8%
Fairly Active – an average of 30-59 minutes a day	23.8%	27%	28.8%	24.2%	25.3%	29.9%	23.9%	26.1%	24.1%
Active – an average of 60+ minutes a day	44.9%	42.5%	29.5%	46.8%	44%	43.8%	43.3%	45%	43.1%

4. Football

FA Grassroots Football Strategy 2020-24 – Survive – Revive - Thrive (March 2021)

4.1 Underpinning the strategy is the aim for the grassroots game to:

Harness the power of football to unite communities and improve the health of the nation.

4.2 There are 14.1 M people playing grassroots football in all forms and frequencies, including 13.5M regular participants , contributing £7.74bn of direct economic value, £1.62bn of healthcare savings and £780m of social value.

4.3 The FA can evidence that:

- Children who play football are more confident and more resilient than those who do not play sport.
- Adult football contributes to the reduction of 203.4K cases of physical and mental health conditions.
- Walking football is important for older adults and helps improve mobility and coordination, gives participants a sense of belonging and provides them with a sense of purpose.

4.4 The FA have identified that by 2024 seven focus areas of;

- Modernised opportunities to retain and re-engage millions of male participants in the game.
- Female participation - A sustainable model based on a world-class, modernised offer, with 90% of primary and secondary schools and 75% of clubs offering equal access to football.
- A vibrant national club network that delivers inclusive, safe local grassroots football and meets community needs.
- Enhanced access to good quality pitches across grassroots football.
- A transformation in community football by inspiring, supporting and retaining volunteers in the game.
- An efficient grassroots digital ecosystem to serve the administrative and development needs of players, parents and the workforce.
- A game that's representative of our diverse footballing communities, played in a safe and inclusive environment.

Consultation

4.5 Consultation was undertaken in June 2021, a survey was sent out to football clubs, schools, sports providers, and Parish Councils. The surveys were based on the Sport England PPS Guidance templates but adapted to gather key information most relevant to refreshing

the PPS with the focus being on changes since 2016. Telephone consultation was undertaken where appropriate. West Riding FA were consulted on the findings and recommended action plan. Feedback was received from:

Table 6: Football Consultee Responses

Football Clubs (FC)	Parish Council (PC) – 19 returns of which the following responsible for football pitches	Sports Providers	Education Sector
Settle Utd AFC Cononley Sports Club Bradley FC Sutton Juniors FC Gargrave United Crosshills FC Grassington United Grassington United Football Club Skipton Walking Football Club Ingleton Football Club Skipton Juniors Football Club	Gargrave Parish Council Burton In Lonsdale Cowling PC Bentham Town Council Sutton-In-Craven Carleton-In-Craven Parish Council Embsay With Eastby Parish Council Giggleswick PC Long Preston Parish Council Skipton Town Council	Bentham Playing Fields Association Sandylands Sports Centre Dalesway (owner of LMS ground)	Giggleswick School Embsay Primary Glusburn Primary Ingleton Primary Settle College Skipton Academy South Craven School Upper Wharfedale School

Supply

- 4.6 There has been no significant loss of pitches since 2016. The Malsis School site has been developed in line with the PPS 2016 action plan and is now known as Malsis Hall Playing Fields. The Sport England 2021 PPS data when compared with the 2016 data has removed several primary school sites (it is assumed these were not community accessible pitches but continue to be used for education purposes) which accounts for the change sites. The total number of pitches available including the YDNPA area is:

Table 7: Football Pitch Supply

Grass Pitches	2016	2021
Total sites	36	33
Total Pitches	58	57

- 4.7 A comparison with the detailed 2016 pitch quality assessments has been undertaken based on the information supplied by consultees. There have been no on site assessments undertaken as part of the refresh, the quality information is subjective as supplied by the clubs. Based on the feedback the quality of provision has reduced at five sites, there has been no change at nine sites and improvement at six sites. (Note: the SE database has been updated since 2016 and a number of sites are no longer included in 2021.)

Table 8: Comparison of pitch quality 2016 to 2021

Site	Rating 2016	Rating 2021 Based on Survey Feedback	
		Maintenance/ Quality of pitches	Overall quality compared to 2016
Bentham Sports Field	Standard	Good	Slightly Poorer
Bradley Cricket Club	Poor	Adequate	Slightly Better
Bridge End Ground (Settle)	Good	Good	Much Better
Burnside Crescent (Skipton)	Poor	Not included in SE database	
Burton In Lonsdale Sports and Recreation Field	Standard	Adequate	Much Better
Carleton Primary School	Standard	Not included in SE database	
Cedar House School (Bentham)	Standard		No Change
Cononley Primary School	Poor	Not included in SE database	
Cononley Sports Club	Standard	Poor	Slightly Poorer
Cowling Community Primary School	Poor	Not included in SE database	
Cowling Sports Club	Poor	Unsuitable	Much Poorer
Cross Hills Football Club	Good	Good	Much Better
Embsay Sports Field	Poor	Adequate	Adequate
Firth Street Recreation Ground (Closed)	Poor	Not included in SE database	
Gargrave Church of England Primary School	Standard	Not included in SE database	
Gargrave Sports Field	Standard	Good	No Change
Giggleswick School	Good	Good	

Glusburn Primary School	Standard	Good	No Change
Greatwood Primary School (Skipton)	Standard	Not included in SE database	
Harrison Playing Field (Giggleswick)	Standard	Good	No Change
Hellifield Sports Football Club	Poor		
High Bentham Primary School	Poor	Not included in SE database	
Ingleton Football & Cricket Field	Good	Good	Slightly Better
Ingleton Middle Primary School	Poor	Good	
Keighley Road (Skipton)	Poor	Not included in SE database	
Low Green, Gargrave	Poor	Adequate	Slightly Poorer
Malsis Hall Playing Fields (Sutton in Craven)	Not applicable	Good - new pitch development	
Raikes Road Recreational Ground (Skipton)	Poor	Not included in SE database	
Ramper Park (Carleton)	Standard	Adequate	No Change
Sandylands Grass Pitches - Skipton (NYCC)	Poor	Poor	Much Poorer
Settle College	Standard	Adequate	
Skipton Academy	Standard	Poor	
Skipton LMS Pitch	Standard	Adequate	No Change
Skipton Town FC	Standard	Adequate	No Change
South Craven School	Standard	Adequate	No Change
Sutton Park	Poor	Adequate	No Change
Town End Field - Grassington	Not applicable	Good	Much Better
Upper Wharfedale School (Grassington)	Not applicable	Poor	

- 4.8 The 2016 PPS highlighted that Bridge End Ground, Cross Hills Football Club and Giggleswick School scored well. The feedback indicates that the quality of these pitches remains good and that there have been further improvements since 2016. The Malsis School site which was closed in 2016 has now been developed into playing fields and these are of good quality and the home of Sutton Utd, the pitches are known as Malsis Hall Playing Fields.

- 4.9 In 2016 the pitches at Hellifield Sports Club and, Sutton Park were highlighted as scoring poorly. There is no club playing at Hellifield and no improvements to the pitch or ancillary facilities. In addition to the new pitches at the Malsis Hall Playing Fields, Sutton United continue to use the Sutton Park pitch and it has been rated as adequate by the club.
- 4.10 The 2021 feedback highlights that there has been a reduction in the quality of pitches at Cononley Sports Club, Cowling Sports Club, Low Green Gargrave, Sandylands NYCC pitches and at Upper Wharfedale School.
- 4.11 Football teams playing at these sites are; senior men's team at Cononley Sports Club, Sandylands NYCC is the home of Skipton Juniors who have teams across all age groups from U7/U8 through to U17/U18. At Low Green, Gargrave mini football 7v7 and youth football 9v9 is offered by Gargrave United. Grassington Football Club have junior and senior teams who use Upper Wharfedale School site and Town End Field Grassington.
- 4.12 The Skipton LMS Pitch is being used by Skipton Juniors on an occasional basis under a local arrangement with the owner for midweek training when daylight hours prevent the NYCC Sandylands pitches being available and capacity is not available at the 3G AGP at Sandylands Sports Centre.
- 4.13 Based on feedback from consultation and other known information including the 2019 Progress Report, the current progress on the 2016 PPS action plan is detailed below.

Table 9: PPS 2016 Action Plan Progress Update

Site 2016	Pitch Type 2016	Site 2021	Pitch Type 2021	Notes	Progress Update as at 2019 on the PPS 2016 action plan	Feedback from 2021 Survey
Bentham Sports Field	Adult Football	BENTHAM PLAYING FIELDS	Adult Football	No Grass Pitches Currently Marked Out	<p>Foot1 -No teams at site, has limited progress.</p> <p>New group Bentham Playing Fields Association (PFA) reformed to take site forward. New PFA members leading on developing the site and use after communiyt consultation</p> <p>Note: Craven Wanderers are based mainly at Ingleton. Caton Juniors have agreed use of pitch at Burton in Lonsdale.</p>	<p>Playing Fields Association -We are desperate to try and improve the facilities at Bentham playing fields for Bentham and the wider community.. Bentham no longer has its own football club to maintain the pitch to its previous standard. Craven Wanderers use the pitches for training and matches. Caton Juniors use the flood lite area in winter for training. We also have rounders, netball, pickleball, tennis, yoga, singing group and a local soccer school use the field. In future to provide a kitchen area, expanding the flood lighting. Installing an all-weather/4g pitch. Ongoing issue with dogs</p> <p>Parish Council -we are hoping to be able to further support the excellent playing fields we have in High Bentham, currently leased from Angus Fire Armour. The playing fields committee are considering a walking/running/cycling track, a 'pump' track, and eventually a clubhouse if feasible. we, would obviously like to support them if we can, we already help with grass cutting.</p>
Bridge End Ground Settle	Adult Football	BRIDGE END GROUND	Adult Football		<p>Foot-3 Settle Utd FC have plans drawn up to improve facilities to meet current and future demand – costs ca £130k Lots of in kind support from Club members and some club funds for this but will need some external funding</p>	<p>Ground has been improved through FA Grants. Have planning permission secured for a new clubhouse and changing facilities. In the process of raising the funds.</p> <p>Size of ground unable to field all youth sides at same time. Training space limited.</p> <p>3G illuminated pitch and access to another grass pitch would be hugely beneficial to club and</p>

						community. Settle Utd are striving to improve facilities, any help to sustain our involvement in the community and provide effective coaching and club for young players as well as senior players would be greatly appreciated
Burton In Lonsdale Sports and Recreation Field	Adult Football	BURTON IN LONSDALE SPORTS AND RECREATION FIELD	Adult Football		Foot-4 No progress as Burton FC has folded and action not relevant with no team	Parish Council -Early 2021 drainage works to improve pitch; further works anticipated to facilitate drainage at northwest corner around MUGA pitch. Regular grass cutting with mulching cutter puts cuts grass back into ground; drainage improved early 2021. Separate social space and loos (inc. disabled access loo)within same building; limited equipment storage (currently exploring options for increasing storage). The Sports Pavilion was built in 2015 and since then it has been a useful addition to the Recreation Field facilities. The Parish Council has recently agreed Lonsdale Terriers (formerly Caton Terriers) Junior Football Club use our Recreation Field as its 'home' pitch - brings a lot of people to Field 2 x week, in addition to regular bookings by Lonsdale Archers. Prior to COVID-19: Wray FC used the Field for home matches; Young Farmers used pitch in summer and Social Room during winter. Local bridge club used Social Room for weekly meetings. We've had a wedding, and a couple of music events as well. Hopefully, these users (and more!) will come back to the facility, with the right COVID protocols in place.
Cononley Sports Club	Adult Football	CONONLEY SPORTS CLUB	Adult Football		Foot -5 –Cononley Mill planning application has secured £228k of planning gain. Initiated work with club about this site triggered by planning gain resource. Club has worked up list of projects for the planning gain	Cononley FC - Would like to purchase new nets and goalposts During 2019 the club had correspondence and meetings with CDC officers who assisted in linking the club with NYCC Flood management, Environment Agency, West Riding FA and

					<p>2 – as above – line 1</p> <p>3 – No CUA with South Craven secured subject to floodlights at South Craven and cost of Astro is prohibitive to clubs so they go to Skipton</p>	<p>Sports Pitch Agronomists companies in order the for the drainage and pitch quality matters to be addressed. There has been no further progress on this matter.</p> <p>The club have approached CDC to access the planning gain funding for minor works.</p>
Embsay Sports Field	Adult Football	EMBSAY SENIOR FOOTBALL PITCH	Adult Football	No Grass Pitches Currently Marked Out	<p>Foot -6 – Agreed with landowner and developer via housing planning scheme but awaiting progress on the implementation of this. Senior team has folded Housing scheme started and club to progress scheme to planning</p>	<p>Parish Council - have top levelled ground since 2016. Would like improve drainage in the future.</p> <p>Planning application has been submitted to develop the land identified as part of the development. The planning application proposes to improve the quality of the existing adult pitch and develop a 9V9 pitch on the site and create training area. 2020/21348/FUL</p> <p>There are some aspects of the planning to be determined re: drainage into culvert on neighbouring land, car parking and potential for changing rooms at a later date.</p> <p>Legal agreement regarding planning gain to be agreed with developer subject to above. Embsay Juniors FC have progressed to become incorporated as a CIO and are in a better place to negotiate lease and access funding.</p>
Gargrave Sports Field	Adult Football	GARGRAVE SPORTS FIELD	Adult Football		<p>Foot - 7 Just juniors using the football pitch this season so club feels adequate.</p> <p>2 – Ongoing and clubhouse ok at present</p>	<p>No change the Parish Council cut the grass and the club line marks the pitches.</p> <p>Reduction of pitch quality identified in survey return.</p>
Giggleswick School	Adult Football	GIGGLESWICK SCHOOL	Adult Football		<p>Foot-8 Support development at School and secure training slots for nearby football clubs at peak time if viable - Need to await actions in relation to Rug -1, Hock- 1</p>	<p>The school pitches are booked by external hirers.</p>

Hellifield Sports Football Club	Adult Football	HELLIFIELD SPORTS FOOTBALL CLUB	Adult Football		<p>Foot - 9 – Site owners (Skipton Auction Mart) applied for 8 dwellings on site and reinvesting in new pitch and clubhouse.</p> <p>New team on site for 2018 season, no team in 2019.</p>	<p>Website information indicates that the newly formed club will play in the 2020/21 season in the Craven and District Football League and indicate the home pitch is the recreation field in Hellifield BD23 4JE.</p> <p>Previous planning applications have been withdrawn.</p>
Malsis School Closed		MALSIS HALL SITE			<p>Foot -10 ACTION COMPLETE</p> <p>1 – 4: Planning application (32/2016/17097) that includes re-orientation of pitches to create 5 viable grass pitches for the Club: Application approved in Nov 2017, S106 agreement in place and works on pitches carried out summer / Autumn</p> <p>2018 – Pitched and Club house complete Sept 2019.</p> <p>5 – New internal layout for wooden building for clubhouse being worked up with club ready to meet Condition on planning permission.</p> <p>6 – Artificial pitch is being removed to integrate land into grass pitch layout for 5 pitches</p>	<p>Sutton Juniors - Changing available at Malsis Hall only, used by the older end. Younger end come ready changed to play at Sutton Park and club opens facilities if they need the bathroom.</p> <p>Malsis parking a challenge. Local police consulted - but not much can be done. Malsis Hall would consider supporting an increased parking footprint if council would. The club would like to solve the parking problem at Malsis.</p> <p>Malsis being created has made our pitch management a lot easier.</p>

Sandylands Grass Pitches	Adult Football	SANDYLANDS GRASS PITCHES (NYCC)	Youth Football 11 v 11	Dedicated 11 v 11	<p>Foot -11 the Cricket and Football Clubs have worked together and secured planning permission for new multi sports Clubhouse, Football club leading on pitch improvement works following pitch assessment report. Potential funding for the NYCC pitches as well as reconfigures them. Multi agency meeting with NYCC in Oct 19 to facilitate this.</p>	<p>Skipton Juniors - the club has to switch games on occasions due to the number of games and unsuitability of the state of the grass pitches. Attempts are made to play some games at the Sandylands AGP but availability and costs are issues.</p> <p>Pitches maintained by NYCC and generally poor with club volunteers regularly having to remark. Pitches susceptible to rabbit holes, unofficial use. Drainage work circa 2018 has resulted in little improvement, new development adjacent to site has coincided with greater incidence of flooding. Club is committed to the Community Hub Partnership with Skipton Cricket Club which if realised will give Skipton Juniors a much needed base and it is hoped that through linked work with the FA and NYCC there maybe scope for much needed serious improvement works.</p> <p>Pitches are designated for educational use and therefore able to only offer a licence to occupy outside of school hours to clubs. NYCC are a willing to partner with the Community Hub development to demonstrate secured use as a co- applicant in funding applications.</p>
--------------------------	----------------	---------------------------------	------------------------	-------------------	---	---

Skipton LMS Pitch	Adult Football				<p>Foot -12 Planning application withdrawn. Skipton juniors using pitch for youth matches. Owner considering their options such as 3G solution on site</p>	<p>No regular use since 2013. Occasional training in 2018- 2021 (Skipton Juniors). No pitches marked out.</p> <p>Has been used as overspill car park for events at Sandylands, special event parking e.g. Tour de Yorkshire, Cricket Festival.</p> <p>Landowner has maintained the site - fencing and fly tipping removal, annually maintains grass cutting. Overall quality of pitch remains as at 2016.</p> <p>Future plans - Part redevelopment of the former LMS ground, comprising improvement of an area to be retained for playing pitch purposes and alternative (parking) use on the remainder of the site, has long been identified for the former LMS ground by the owner.</p> <p>Since February 2016 (when the current PPS was published), an application for full planning permission has been submitted by Dalesway, in October 2016, for an improved grass pitch on two thirds of the site and a new surface level car park on the remaining third (under reference: 63/2016/17523).</p> <p>That 2016 application was ultimately withdrawn in August 2019 whilst the landowner developed proposals for an alternative all-weather sports pitch led development to include a multistorey car park on the remainder of the site. An alternative application for full planning permission was then submitted in June 2020, and remains under consideration by the Council, for a multi-use all weather sports pitch and multi storey car park for approximately 480 vehicles (under reference 2020/21748/FUL).</p>
Skipton Town FC	Adult Football	SKIPTON TOWN AFC	Adult Football		<p>Foot -13 – club applied to Football for Pitch Improvement Fund to increase pitch playing quality and playing capacity</p>	<p>Working more closely with Skipton Juniors to feed into the Skipton Town Reserves team. Currently field 2 senior men's and 1 senior women's team. One pitch used to service all three teams. Club potentially may move to 2</p>

					Club working up club development plan	women's teams which would lead to potential overuse of the pitch. Club needs access to good quality additional pitch or suitable training pitches as the number of teams grows. To enable the pitch for competitive play to be protected.
South Craven School	Adult Football	SOUTH CRAVEN SCHOOL	Adult Football		Foot- 14 School secured planning application for floodlights that include the tennis court area. Lights have no impact upon residents but do not meet sports NGB minimum lighting levels for recreational and training use. Air dome built facility planning permission now expired	Facilities now being managed on behalf of the School by Communihire Ltd. Floodlights installed and portable floodlights available for use on site.
Sutton Park	Mini Soccer 5v5	SUTTON PARK	Junior Football 11v11		Foot -15 Support development plans for the former Malsis School with a view to bringing together most of clubs use onto single site. See above.	Younger end come ready changed at Sutton Park and open facilities if they need the bathroom. Drainage poor

- 4.14 The 2016 PPS identified an action to for joint working with the FA and Craven District Council to fund and develop an equipment bank for maintenance machinery and to benefit from additional maintenance training. This action was assigned to include; Bentham Playing Fields, Bradley Cricket Club, Burton in Lonsdale Recreation Field, Cononley Sports Club, Gargrave Sports Field Skipton Town Football Club and Sutton Park.
- 4.15 The feedback from all consultee responses in addition to the above which relates to the 2016 action plan has highlighted the following key areas of note, improvement, or development.

Table 10: Feedback from Consultees 2021

Site 2016	Pitch Type 2016	Site 2021	Pitch Type 2021	Notes	Feedback from 2021 Survey
Cedar House School, Bentham	Youth Football 11v11	CEDAR HOUSE SCHOOL	Adult Football	Commercial Management	School for vulnerable children 8-18yrs so safeguarding & child protection is paramount. Enhance DBS clearance required for anyone using the pitch. Currently, no external hirers.
Cowling Sports Club	Adult Football	COWLING SPORTS CLUB	Adult Football		Parish Council (PC) -Pitch surface is poor with large holes and uneven/sunken areas. PC in future reinvestment in the whole recreation ground to include grass pitch
Cowling Sports Club	Mini Soccer 5v5				
		ERMYSTEDS GRAMMAR SCHOOL	Adult Football		School has submitted a planning application in June 2021 to replace the playing field with 3G floodlit. AGP due to the poor condition of the playing field which impacts on usage by the school. Intention to offer community access. Planning reference 2021/22977FUL.
Giggleswick School	Adult Football	GIGGLESWICK SCHOOL	Adult Football		With the exception of Lords Playing Field pitches in excellent condition. Regular external hires. Community club regular bookings for football by Settle Seniors and Juniors.
Giggleswick School	Adult Football	GIGGLESWICK SCHOOL	Adult Football		
Giggleswick School	Adult Football	GIGGLESWICK SCHOOL	Adult Football		
Giggleswick School	Youth Football 11v11	GIGGLESWICK SCHOOL	Junior Football 11v11		
Giggleswick School	Youth Football 11v11	GIGGLESWICK SCHOOL	Junior Football 11v11		
Giggleswick School	Youth Football 11v11	GIGGLESWICK SCHOOL	Junior Football 11v11		
Giggleswick School	Youth Football 11v11	GIGGLESWICK SCHOOL	Junior Football 11v11		

		GIGGLESWICK SCHOOL (LORDS PLAYING FIELD)	Adult Football		
		GIGGLESWICK SCHOOL (LORDS PLAYING FIELD)	Adult Football		
Glusburn Primary School	Mini Soccer 5v5	GLUSBURN COMMUNITY PRIMARY SCHOOL	Junior Football 11v11		School response - quality of pitch good. Sutton Juniors hire pitches for Sunday matches. Demand by hirers not changed since 2016.
Glusburn Primary School	Mini Soccer 5v5	GLUSBURN COMMUNITY PRIMARY SCHOOL	Mini Soccer 7v7		

		GRASSINGTON JUNIORS FOOTBALL CLUB TOWN END SITE	Adult Football And Junior football	One pitch on Town end site. Communihire Ltd will	<p>Have spent a lot of money bringing changing facilities up to standard. New showers, shower pump. New toilets with basins. New kitchen with tea facilities. Also just renewed a ceiling and will need to replace two more and a floor next year.</p> <p>We have spent a lot of money on drainage (More drainage, more cuts and weed and feed, all big costs to the club), but in winter both the juniors and seniors both struggle to play on it. Sometimes we have to rent Sandylands at a high cost. The juniors just don't get to play. We have done what we can, we won't get it any better. We really need a AGP pitch in the local area.</p> <p>Replacing the flooring in the club house and constant reseeding of the pitch</p> <p>Grassington Football Club - We are collaborating alongside Wharfedale Rugby Club with the sports hub for the Dale's. We need better facilities in the area to help children both boys and girls get into sport. There are no facilities for the disabled which is a real shame. The opportunity to create a sports hub is massive, there are so many people that want to make this happen and give those everyone in the area a chance and opportunity to play football, rugby, cricket, hockey, rounders, athletics and so many other sports.</p>
		GRASSINGTON JUNIORS FOOTBALL CLUB	Junior Football 11v11	No Grass Pitches Currently Marked Out	
Ingleton Football & Cricket Field	Adult Football	INGLETON SPORTS FIELD	Adult Football		Would like separate changing rooms for officials
		INGLETON PRIMARY SCHOOL	Junior Football 11v11		<p>School response - Pitch quality good.</p> <p>External hire - Local Junior football team, one evening a week and weekends during the grassroots season.</p> <p>Local rounders team. Ingleton football club occasionally for training. Overall demand has decreased since 2016.</p> <p>Expect demand to further decrease as junior football team starting to use another pitch in High Bentham.</p>

		INGLETON PRIMARY SCHOOL	Junior Football 11v11		
Low Green, Gargrave	Adult Football	LOW GREEN	Adult Football		Parish Council - Well used by many visitors, dog fouling present and visits by Travellers when they feel like pitching camp. The users of the football pitch would welcome any improvements that could be made, sadly as a Parish Council we are not in a position to fund any. Pitch used by Gargrave Utd Juniors
		LONG PRESTON PLAYING FIELD	Football - not marked		Pitch quality good, not changed since 2016. New goal post dual purpose football/rugby installed in 2021. Future - build a sports pavilion in early stages of planning.
Ramper Park	Adult Football	RAMPER PARK	Mini Soccer 7v7		Parish Council - small pitch quality and maintenance adequate. Used by local children up to age of approx. 14-15 years.
Settle College	Adult Football	SETTLE COLLEGE PLAYING FIELDS	Adult Football		Since 2016 - Verti draining etc work every summer, rabbit pest control, erection of a fence around the field to prevent dog walkers. External hire - Settle United Junior FC from Sept 21 (Weekend), Settle Harriers running group (evenings), Clubbercise exercise class (evenings), Community sports day. Demand has increased since 2016. We struggle to staff the locking and unlocking of the facilities in the evening and over weekends and this affects our ability to hire it out. We also have a legacy gravel dust area on our field, used in years gone by as an all-weather surface but this is not up to any modern standard for use by school children as the gravel dust surface can cause slips and injuries
Settle College	Adult Football	SETTLE COLLEGE PLAYING FIELDS	Adult Football		
Settle College	Youth Football 11v11	SETTLE COLLEGE PLAYING FIELDS	Junior Football 11v11		

		SETTLE COLLEGE PLAYING FIELDS	Junior Football 9v9		
		SETTLE COLLEGE PLAYING FIELDS	Mini Soccer 5v5		
Skipton Academy	Adult Football	THE SKIPTON ACADEMY	Adult Football		<p>Poor. Although ample space, the pitches are generally not flat, with the 11 v 11 football pitch and the rugby pitch being on very distinct slopes. Furthermore, the pitches suffer from rabbits digging partial holes.</p> <p>Since 2016 - The field now has a perimeter fence, which now prevents members of the public from walking their dogs on the school field. External hire - A local junior football team uses the pitches during evenings and weekends. Number of lettings has increased since 2016.</p>
Skipton Academy	Youth Football 11v11	THE SKIPTON ACADEMY	Junior Football 9 v9		
South Craven School	Adult Football	SOUTH CRAVEN SCHOOL	Adult Football		Facilities on an evening are now managed by community hire. New venture with school post covid as previous company went bankrupt.
		SOUTH CRAVEN SCHOOL			
		SOUTH CRAVEN SCHOOL	Adult Football		

		UPPER WHARFEDALE SCHOOL	Junior Football 11v11		<p>External hire -Wharfedale Cricket Club, Rugby Club, Grassington Football Club. Demand has stayed the same since 2016.</p> <p>One pitch for all sports and the quality is poor.</p> <p>There is no drainage on the pitches, so during winter months we are unable to use them.</p> <p>If there was scope for improvement, there is reasonable space for adequate pitches or 4G, but we don't have any funding to improve these facilities.</p> <p>If we had a 4G pitch the local sports club could use it more regularly and all year round. We have to limit external use to ensure the pitch is in a reasonable condition for school use.</p> <p>Communihire Ltd will be managing the community use at the site as from November 2021 on behalf of the school.</p>
--	--	-------------------------------	-----------------------------	--	--

Demand

- 4.16 Clubs were asked how many teams they expected to have in the full season 2021-2022, the eleven clubs who provided feedback indicated that collectively they would have 84 teams. The West Riding FA (WRFA) data shows that there are 110 affiliated teams in the district across all formats, a growth of 8 teams from the 2016 baseline of 108 teams the change is because of a decline in open age male, a growth in mini soccer teams and growth in the female game (girls). The West Riding FA data is used as the baseline for the supply and demand assessment for the PPS Refresh.

Table 11: Demand by number of teams affiliated to WRFA 2021

Age Group	Type	Number of teams		Total
		Boys/Men	Girls/Women	
Mini Soccer U7/U8	5v5	17	2	19
Mini Soccer U9/U10	7 v7	19	2	21
Total		36	4	40
Youth U11/U12	9 v9	16	2	18
Youth U13 – U 17	11 v11	23	4	9
Total		39	6	45
Over 18 Senior	11v11	23	2	25
Overall Total		98	12	110

- 4.17 There are two of the largest clubs within this cohort, Sutton Juniors have twenty seven teams and Skipton Juniors twenty teams which equates to 67% of the junior football teams in the district. In the mid craven areas Settle United have six junior teams and three senior teams. Grassington Football Club which were not included in the 2016 PPS have five junior teams and two senior teams.
- 4.18 Embsay Juniors who were highlighted in the 2016 PPS at that time had eight teams, although no feedback was received they have teams in all junior age groups. The design and access statement for the current planning application (2020/21348/FUL) relating to the existing and creation of a new football pitch at land at Shires Lane, Embsay, confirms the club continues to have eight teams. Five teams in the Craven and Aire and Wharfe Junior League plus mini soccer teams in the Dales Friendly League. The West Riding FA data indicates there are eleven teams at Embsay Juniors. The club plays at a number of pitches and the proposed development of the football pitches will provide a home for the club.
- 4.19 The feedback from clubs indicated that in comparison to the season 2018-2019, pre Covid, most clubs had seen the number of teams stay the same. There has been a small number of increased teams particularly for Mini Soccer. Decrease in teams are more notable for Boys Youth teams. Senior men's and women's have stayed the same at ten clubs with an increase at two clubs. The feedback from clubs was:

Table 12: Impact of Covid19 on participation

In comparison to the full season 2018-019, pre Covid, how has the number of teams in your club changed?						
Club	Mini Soccer - Boys	Mini Soccer - Girls	Youth - Boys	Youth - Girls	Senior - Men	Senior - Women
Settle UTD AFC	Increased		Decreased		Increased	
Cononley Sports	Stayed the same	Stayed the same	Stayed the same	Stayed the same	Stayed the same	Stayed the same
Bradley FC					Stayed the same	
Sutton Juniors FC	Stayed the same	Stayed the same	Stayed the same	Stayed the same	Stayed the same	Stayed the same
Gargrave United	Stayed the same		Stayed the same			
Crosshills FC			Stayed the same		Stayed the same	
Grassington United	Decreased	Increased	Decreased	Increased	Stayed the same	Stayed the same
Bentham PFA	Increased	Stayed the same	Increased	Stayed the same	Stayed the same	Stayed the same
Skipton Walking Football Club					Stayed the same	
Ingleton Football Club					Stayed the same	Stayed the same
Skipton Juniors Football Club	Increased	Increased	Stayed the same	Stayed the same		

- 4.20 There was a total of 102 teams identified in the 2016 PPS. Given the feedback from clubs in 2021 on the number of teams and the information above on the impact of Covid 19 there appears to be stability within clubs given most clubs and the number of teams. Given the growth at Sutton Juniors and the inclusion of Grassington Football Club the West Riding FA data indicates that there has been a growth of 8 team with 110 teams affiliated with West Riding FA.

- 4.21 The 2016 PPS indicated that there would be a future demand for more teams across all male age groups and that needed to be factored into future facility provision. In 2016 it was projected that in total 10.5 additional teams would be required. These teams were likely to be at Senior Men's and in Mini Soccer. Given the growth identified above and the inclusion of Grassington in the period since 2016 it can be assumed that this projection is on track with an additional 8 teams since 2016. The development of pitches at Malsis Playing Fields have enabled this to be achieved.
- 4.22 Team Generation Rates (TGR) provide an indication of how many people it may take to generate a team. TGR considers current and future populations and what this potential change across the sport and age groups may mean for playing pitches in the future. Using the Sport England TGR calculator, the TGR for Craven as of 2021 are:

Table 13: Team Generation Rates

Age Groups	Number of teams in age group within the area	2021 population in age group within the area	2032 population in age group within the area	Current TGR	Population Change in Age Group	Potential Change in Team Numbers in Age Group
Football Adult Men 11v11 (16-45yrs)	2329	7895	8010	272.24	115	0.42
Football Adult Women 11v11 (16-45yrs)	2	7821	7896	3910.50	75	0.02
Football Youth Boys 11v11 (12-15yrs)	23	1338	1208	47.79	-130	-2.72
Football Youth Girls 11v11 (12-15yrs)	4	1176	1112	235.20	-64	-0.27
Football Youth Boys 9v9 (10-11yrs)	16	665	556	36.94	-109	-2.95
Football Youth Girls 9v9 (10-11yrs)	2	587	534	146.75	-53	-0.36
Football Mini Soccer Mixed 7v7 (8-9yrs)	19	1197	1048	63.00	-149	-2.37
Football Mini Soccer Mixed 5v5 (6-7yrs)	17	1106	1010	73.73	-96	-1.30
Football Mini Soccer Girls 7v7 (8-9yrs)	2	618	518	309.00	-100	-0.32
Football Mini Soccer Girls 5v5 (6-7yrs)	2	525	495	262.5	-30	-0.11
Note : Total number of teams 110 compared with 102 in 2016.						
Current TGR is the number of people required to generate one team e.g. 73.73 children aged 6-7 years is needed to generate one team in 2021. With the change in population by 2032 the number of teams in the age group will reduce by 1.3.						

- 4.23 The future demand is likely to be from potential slight increases in adult football and possible reductions in approximately 10 junior football teams. It is important to note that Skipton Juniors currently have around 250 members and are unable to accept more players due to a lack of coaches and volunteers. The club is to some extent stretched for pitch capacity and this would need to be part of any consideration to accept more players should the number of coaches and volunteers available be increased.
- 4.24 Junior competitive football is played in the Dales Friendly League on Saturdays and in the Craven, Wharfe and Aire Junior league on Sundays. There has been a reduction in the number of teams in the Dales Friendly League and should this become unsustainable in the future the likelihood is teams would enter the Craven, Wharfe and Aire Junior League therefore increasing the demand for pitches on a Sunday.

Supply and Demand Balance

- 4.25 Given the updated information on supply and demand and the light touch approach to the PPS refresh it is reasonable to conclude that there is sufficient supply of pitches to meet current and future changes in demand for pitches. Therefore, pitches need to be protected and improved to ensure good quality provision.
- 4.26 There are sites such as Hellifield and Bentham where there is currently no football team. The rural nature and locality of such sites means that they are important as a community recreational amenity space as well as a playing field and can be used for other activities and sports and not just football. The LMS site is under utilised but is important within the overall Sandylands location.
- 4.27 It is important to ensure that where the quality of pitches is good this is at least maintained and where required the quality of pitches improved and enhanced. There is no need to provide additional pitches beyond this development. The pitch development at Embsay was previously identified in the 2016 PPS and is still required and remains a valid recommended action.

Football and Artificial Grass Pitches (AGP)

- 4.28 There are several surface types that fall into the category of artificial grass pitches. The FA considers that 3G rubber crumb support intensive use and suitable for playing and training. These surfaces are being increasingly used for competition. Competitive football can take place on all 3G surfaces and the preferred pile length is 60mm. Only competition up to (but not including) regional standard can take place on a 40mm pile. Football training can take place on sand and water based surfaces but this is not preferred to a 3G pitch.

- 4.29 In Craven the provision of AGP includes two 3G surfaces at Sandylands Sports Complex and South Craven School. Since the 2016 PPS floodlighting has been installed at the South Craven School site. Both pitches are of a good standard and the Sandylands pitch meets FIFA approved standards with the current certification valid until 2023.
- 4.30 The current overall supply of AGP in 2021 compared with 2016 is detailed in the table below with the 3G AGP highlighted. Although the preference for football is a 3G rubber crumb surface it is important to consider the total supply as sand based short pile AGP can be used for football for recreational and training purposes.

Table 14: Supply of AGP in Craven District

Site Name 2016	Size	Community use category	Security of use	Pitch score
Burton In Lonsdale Sports and Recreation Field	36x20m	Available for community use and used	Secured	Poor
Giggleswick School	100x60m	Available for community use and used	Secured	Standard
Malsis School	65x37m	Not available for community use	None	Poor
Sandylands Sports Centre – 3G	100x60m	Available for community use and used	Secured	Standard (Note: this has recently failed a performance test and requires resurfacing)
South Craven School -3G	100x60m	Available for community use and used	Unsecured	Standard – no floodlighting

Site Name 2021	Size	Community use category	Security of use	Pitch score
Burton In Lonsdale Sports and Recreation Field	36x20m	Available for community use and used	Secured	Standard
Ingleton Multi Use Games Areas - 3G – small sided 7 a side, floodlit	30m x 20m tbc	Available for community use and used	Secured	Good
Giggleswick School	100x60m	Available for community use and used	Secured	Good – resurfaced 2016
Sandylands Sports Centre - 3 G	100x60m	Available for community use and used	Secured	Good – resurfaced 2016, lighting upgraded 2018
South Craven School – 3G	100x60m	Available for community use and used	Unsecured New contract 2021 with local operator for community use.	Good – lighting installed

South Craven School	Approx. 35m x45m (3 tennis courts)	Available for community use and used	Unsecured	Good
---------------------	---	---	-----------	------

4.31 Ermysteds Grammar School submitted a planning application (2021/22977FUL) in summer 2021 to replace an existing grass pitch with a 3G floodlit AGP. The school have identified in the planning application community use during the evening and at weekends. There is a sand based AGP at Giggleswick School which provides a community accessible facility for football training, which is regularly booked by community clubs outside of school hours. The owner of the LMS ground has proposed in the planning application (2020/21748FUL) the installation of an AGP. Consultation with Skipton Juniors, Sandylands Sports Centre and Skipton Cricket Club indicates that should a AGP be developed at this site a short pile sand based AGP would enable not just football but other sports and activities to benefit.

4.32 Demand and usage for the existing 3G pitch at the Sandylands is summarised as:

- Open hours Monday - Friday 9.00am-10.00pm, Saturday 9.00am-6.00pm, Sunday 9.00am-9.00pm
- Evenings October to March at 100% capacity. Block bookings with biggest demand is between 6.00-8.00pm, currently have a waiting list for these slots.
- Operate leagues Monday and Sunday evenings.
- Some education use midweek daytime variable throughout the year. Walking football daytime.
- Well used by Skipton Juniors Saturday morning and midweek evening for training.
- April - September club bookings stop and tend to be replaced by social/recreational football bookings. Usually, have some capacity at the 6.00-8.00pm slot.
- April- September less well used by education sector

4.33 Demand and usage at existing 3G pitch at South Craven School is summarised as:

- Opening hours Monday- Friday 5.30-9.30pm Saturday 9.00am-4.00pm, Sunday opening can be accommodated subject to demand/events
- 98% of bookings are block bookings midweek. Junior soccer hub booking on Saturdays. As of September 2021, only 3 hours not yet block booked through to December, expect similar pattern to the end of March.
- The school has recently carpeted a MUGA and purchased portable floodlights to compliment to 3G. This area accommodates 3 tennis courts, provides a training surface suitable for hockey and under 16's football, tennis, netball.
- School have entered into a contract with a local sports facility management company to operate and grow the community use.

- 4.34 Using the FA indicative supply and demand model as set out in the 2016 PPS it is estimated that one full size AGP can service 38 teams. On that basis and that we estimate there are 110 teams in Craven in 2021, there is a recommended need for 2.9 rounded up to 3 full size 3G pitches, to be used at peak times. An increase of 1 full size 3G AGP from the 2016 PPS.
- 4.35 In 2016 there was a recommended need for 2 full size 3G pitches at peak times and that the improvements to the Sandylands Sports Complex pitch and installation of flood lights at South Craven School would meet this need. Both these recommended actions have been completed and two good quality 3G AGP are available in Craven. The 2018 Football Foundation Local Football Facility Plan (LFFP) confirmed that there was sufficient full size 3G pitches.
- 4.36 The 2016 PPS suggested that any new provision to meet the need for 2 full size 3G pitches (if there was no floodlighting at the South Craven School pitch) should service the central and northern parts of the district.
- 4.37 Since 2016, the Ingleton 3G small sided 5 v 5 side pitch operated and owned by Ingleton Rural Community Association brings the number of 3G pitches to 2.25, a shortfall of 0.75 of the 2021 recommended need of 3 full size 3G AGP. The Ingleton 3G AGP provides access to a 3G AGP facility in the mid- north area of the district. The Football Foundation Local Football Facility Plan (LFFP) had recommended this pitch being upgraded to a 3G as a priority project, which has been achieved.
- 4.38 The FA's updated modelling suggests that one full-size equivalent 3G AGP can serve approximately 38 affiliated teams (previously 45 teams). This suggests that there is a current shortfall of 0.75 full-size 3G AGPs in the district. The 2021 refresh concurs with the 2016 PPS that there remains a deficit in the central and northern areas of the district and as stated in the 2016 PPS any supply for any additional 3G AGP (small-sided or full size utilised by other sports i.e. Rugby) should be focussed in the central and northern parts of the district. Further confirmation on location is found in the LFFP 2018 which highlighted the rural nature of the district which has an impact on access and travel times to 3G pitches and with an uneven distribution of pitches to the south of the district and that small sided 3G pitches were needed in the central and northern parts of the district.

Key Findings for Football

- 4.39 The supply and demand results indicate that overall that there is sufficient capacity across the district of grass pitches and a shortfall of one full size 3G AGP football pitch. The development of a full sized 3G AGP pitches in the mid and north areas of the district would be beneficial to participation, in particular the Grassington/Threshfield area which does not have an accessible 3G pitch suitable for training and small sided games. It should be noted that the supply and demand data does not support a strategic need for additional AGP in the south of the district. This subsequently informs any future developments for example at Ermysteds Grammar School or the LMS ground as described in paragraph 4.31.
- 4.40 Enhancements have been made since 2016 which include:

- The development of the Malsis School site which has enabled Sutton Junior Football Club to continue to grow and develop.
 - The Ingleton 5 v 5 pitch has been upgraded to a 3G AGP surface and floodlit.
 - Planning permission has been granted for the development of a multisport club house at Skipton Cricket in a partnership between the cricket club and Skipton Town Juniors. Settle Utd FC have equally secured planning permission for a new club house and changing facilities. The securing of funding to deliver these projects is a priority for these clubs.
 - Embsay Junior FC are working with the landowner/developer and have submitted a planning application to develop the playing pitches which will provide the club with a base.
 - Several Parish Councils ,clubs and education sites have improved the quality of pitches by implementing grounds maintenance and management plans. Feedback from clubs and Parish Councils indicates that there is a continued commitment towards enhancing the provision available.
 - Floodlighting has been installed at South Craven School to increase the capacity for community access to the 3G AGP.
 - There are several sports clubs based at the Sandylands location. There is mixed land ownership and sports facility management at Sandylands which adds a layer of complexity to the master planning approach identified in the 2016 PPS. The Sandylands Sports Complex resurfaced the 3G surface which meets FIFA approved standards and have made improvements to the floodlighting. More recently, Craven District Council have facilitated the clubs to work more closely together and the local authority will support the commissioning of a master planning exercise to identify areas for joint work, investment, and priorities in the future.
- 4.41 The LMS site within the Sandylands location has a strategic fit with the location, although not fully utilised at present there is the potential to enhance the pitch provision to fit with the development of the new club house and changing rooms identified above, with the pitch being used by Skipton Town Juniors and potentially Skipton Town should additional women's teams be developed. Development of the LMS pitch will be governed by the current owner who is exploring the feasibility of investment and long term leases.
- 4.42 Little progress has been made on a collaborative pitch maintenance programme for the district. The geography of the district to a certain extent makes this more restrictive. However, in locations such as Sandylands where there are several sports clubs this would be more realistic. Since 2016, the launch in 2021 of the Football Foundation and FA Pitch Power scheme provides clubs with a tool to inspect and assess pitch quality with the potential to unlock funding to make improvements.

Recommended Action Plan

- 4.43 The recommended action plan includes existing actions from 2016 which remain relevant and updated and new actions based on the information and issues which have emerged during the PPS Refresh study. The format of the action plan follows on from the 2016 PPS.
- 4.44 The actions in relation to Sandylands, Skipton Town and the LMS site in Skipton are linked to the cricket and rugby and AGP action plans later in the document. Similarly, this applies to the development and improvement of sports pitches in Grassington/Threshfield, Wharfedale.

Table 15: PPS Refresh 2021 Football Action Plan

Site	Action ID	Issue/Opportunity to be addressed Key Actions	Specific Actions	Lead (Bold) and Partners	Resource Implications	Timescales and Priorities Short 1-3 years Medium 3-5 years Long 6-10 years
Collaborative Pitch Maintenance Programme Assigned to pitches identified in specific actions column	Foot-1 Foot - 2 Foot – 4 Foot – 5 Foot - 6 Foot – 7 Foot - 8 Foot – 9 Foot -11 Foot -13 New Foot -15 Foot - 17 Updated	PPS 2016 identified the action for FA and CDC to fund and develop an equipment bank for maintenance machinery and benefit from additional maintenance training. Recommended Revised Action: The FA and Football Foundation have launched PitchPower (https://footballfoundation.org.uk/pitchpower) - a really simple tool to help individual sites inspect and improve their grass pitches. The site self-inspection will provide regular detailed assessment reports from grounds management experts at the Grounds Management Association, including	This action was assigned to: Bentham Playing Fields Bradley Cricket Club Foot- Burton in Lonsdale Playing Field Gargrave Sports Field Cononley Sports Club Embsay Sports Field Hellifield Sports Field Sandylands Grass Pitches Skipton Town FC Sutton Park Addition –	FA and CDC Clubs	FA support CDC support Volunteer time.	Short High Priority

		<p>recommendations on maintaining and improving the quality of the pitches.</p> <p>All key sites should be encouraged to undertake a PitchPower self-assessment and review the report recommendations.</p> <p>Grants are available through the Football Foundation to acquire grounds maintenance machinery where there is the desire to bring elements of pitch maintenance in-house.</p>	<p>Cowling Sports Club Town End Grassington Bridge End, Settle Ingleton Football Field Gargrave Playing Field</p>			
Bridge End Ground	<p>Foot-3</p> <p>Updated</p>	<p>Funding is required for the club to be able to deliver a new clubhouse and changing facility following their successful Planning application. (31/2016/17502)</p> <p>Undertake discussion with Settle College to explore how the club can work in partnership to enable more access to pitches out of school hours. E.g can the club lock and unlock access to pitches?</p>	<p>In kind support from club members and volunteers required for fundraising.</p> <p>Identify external funding opportunities and submit applications.</p> <p>CDC to assign developer contributions where applicable in line with Local Plan policies</p>	<p>Settle United</p> <p>FA and Football Foundation</p> <p>CDC</p>	<p>Volunteer time</p> <p>FA and Football Foundation support</p> <p>Funding</p>	<p>Short</p> <p>High Priority</p>
Burton In Lonsdale Sports and Recreational Field	<p>Foot-4</p> <p>Updated</p>	<p>Drainage improvement work has been completed on part of the site. Additional drainage work required in other areas.</p> <p>Review options for increasing storage capacity at sports pavilion.</p>	<p>Volunteer time to develop and manage projects.</p> <p>Partnership work with new teams using the site to support fundraising.</p>	<p>Burton In Lonsdale Parish Council</p> <p>Lonsdale Terriers Junior FC</p>	<p>Volunteer Time</p> <p>Funding to undertake works</p>	<p>Medium</p> <p>Low priority</p>

			<p>Sports pitch contractor appointed to undertake works.</p> <p>CDC to assign developer contributions where applicable in line with Local Plan policies</p>			
Cononley Sports Club	<p>Foot-5</p> <p>Updated</p>	<p>The site suffers from drainage issues and moles. The club are looking to extend the pitch in order to reduce overmarking with cricket.</p> <p>Recommended Revised Action: Planning gain funds should be used to engage an agronomist to undertake a study to recommend an action plan to resolve the pitch conditions for both cricket and football.</p>	<p>Partnership working between football and cricket clubs supported by CDC to engage a qualified agronomist.</p> <p>Review outcome of agronomist study and plan accordingly.</p>	<p>Cononley Sports Club</p> <p>CDC</p> <p>(FA and ECB)</p>	<p>Volunteer time</p> <p>CDC officer time</p> <p>Planning gain funds (secured)</p>	<p>Short</p> <p>High priority</p>
Cowling Sports Club	<p>Foot – 16</p> <p>New</p>	<p>The pitch surface is poor, uneven/sunken in areas.</p> <p>This would enable junior football to be played at the site. Generally, improve a community playing field and recreational space which could be used for a range of sports and activity.</p>	<p>Pitch improvement works to improve the surface.</p> <p>CDC to assign developer contributions where applicable in line with Local Plan policies</p>	<p>Cowling Parish Council</p>	<p>Volunteer time</p> <p>Parish Councillors</p> <p>Parish Clerk</p>	<p>Medium</p> <p>Low priority</p>
Embsay Sports Field	<p>Foot-6</p> <p>Updated</p>	<p>Planning application to be decided. 2020/21348/FUL</p> <p>There are some aspects of the planning to be determined re: drainage into culvert on neighbouring land, car parking and potential for changing rooms later.</p>	<p>Dialogue with CDC re: planning application.</p> <p>CDC to support developer and football club with discussions re drainage connections.</p>	<p>Embsay Juniors Football Club</p> <p>CDC</p> <p>Developer</p>	<p>Volunteer time</p> <p>CDC Officer time</p> <p>Developer time</p>	<p>Short</p> <p>High priority</p>

		<p>Legal agreement regarding planning gain to be agreed with developer subject to above.</p> <p>Opportunity to work with Embsay Cricket Club – Crick 10 regarding car parking</p>	<p>CDC to finalise negotiations on planning gain with developer.</p> <p>Secure funding to set up and for site to be operational.</p>			
Giggleswick School	<p>Foot-8</p> <p>Not applicable</p>	<p>School will no longer be developing a 3G pitch and therefore 2016 actions not applicable.</p> <p>The school continues to make the existing AGP and grass pitches available under the community use agreement for local clubs.</p>				
Hellifield Sports Football Club	<p>Foot-9</p> <p>No change</p>	<p>Use potential planning gain available to invest in a new facility and develop overall provision at the site.</p>	<p>Specific actions will be dependent on any planning application by site owners and the stability of the newly formed club on site.</p>	<p>Hellifield Sports Football Club</p> <p>Site owners</p> <p>CDC</p>	<p>Volunteer time</p> <p>CDC Officer time</p>	<p>Medium to Long Term</p> <p>Low priority</p>
(Former) Malsis School	<p>Foot-10</p> <p>Not applicable</p>	<p>The site has been developed and the key actions from the 2016 PPS completed.</p>				
Sandylands Grass Pitches	<p>Foot-11</p> <p>Updated</p>	<p>The action to undertake some pitch improvement was completed in 2018 by NYCC. However, clubs indicate that this has resulted in very little improvement and matches need to be switched due to flooding.</p> <p>Recommended Revised Action:</p>	<p>CDC to support the club with discussions with NYCC.</p> <p>Pitch condition survey by qualified agronomist to provide plan of action</p>	<p>Skipton Junior Football Club in partnership with Skipton Cricket Club</p> <p>CDC</p>	<p>Volunteer time</p> <p>CDC and NYCC Officer time</p> <p>Qualified agronomist</p>	<p>Short</p> <p>High Priority</p>

		<p>NYCC to be a partner as a co-applicant for funding to enable Skipton Juniors who are working together with Skipton Cricket Club to potentially access external grants for pitch improvement and the new multisport club house which has secured planning permission.</p> <p>This will demonstrate a commitment for the securing of the pitches in the long term for community and education use.</p>	<p>to remedy flooding and improve pitches.</p> <p>CDC to assign developer contributions where applicable in line with Local Plan policies</p>	<p>NYCC</p> <p>FA</p>	<p>Funding to undertake study and any subsequent pitch works</p>	
Skipton LMS Pitch	<p>Foot-12</p> <p>Updated</p>	<p>The owner has submitted revised plans for the site for 2/3 of the site to be retained as a sports pitch. Planning reference 2020/21748FUL.</p> <p>The location of the pitch has a strategic fit with the Sandylands Sports Complex, Skipton Cricket Club, Skipton Rugby Club and the NYCC Sandylands grass pitches, Skipton Town Football Club.</p> <p>Recommended Revised Action: The site is not surplus to requirements and consideration as to how best it should be used to fit with the wider strategic planning of sports facilities and pitches in the area which is known locally as Sandylands which incorporates the sites listed above.</p>	<p>CDC to provide planning guidance on potential appropriate sports use of the site.</p> <p>Site owner to consider development options and their feasibility.</p> <p>Potential collaborative working with Sandylands clubs and landowners.</p>	<p>Site owner</p> <p>CDC</p>	<p>CDC officer time</p>	<p>Short</p> <p>High Priority</p>
Skipton Town FC	<p>Foot-13</p> <p>Not applicable</p>	<p>The club have undertaken pitch improvements through the Football Pitch Improvement Fund</p> <p>Note: Should the club grow the carrying capacity of the existing pitch maybe compromised. To alleviate overplay access</p>	<p>Skipton Town to engage in discussions/plans re: any potential partnership working across the Sandylands facilities and clubs.</p>	<p>Skipton Town FC</p> <p>CDC</p>	<p>Volunteer time</p> <p>CDC officer time</p>	<p>Medium</p> <p>Medium Priority</p>

		to grass training area/pitch would be a solution. Potential link with wider Sandylands opportunities for pitch development.				
South Craven School	Foot-14 Not applicable	Action from 2016 PPS completed. Floodlights installed and portable floodlights available for use on site. Community access has been increased.				
Sutton Park	Foot-15 Updated	Action from 2016 PPS completed with the development of Malsis site. Drainage on the site is poor and site continues to be used by Sutton Junior FC	Pitch improvement works to improve the surface. CDC to assign developer contributions where applicable in line with Local Plan policies	Sutton in Craven Parish Council	Volunteer time	Medium Low priority
Town End – Grassington	Foot – 17 New	Club has invested in the changing rooms and pitch drainage. However, there are still problems during the winter months with the surface. The site has one pitch used by both adult and junior teams. This limits the potential for growth, particularly for junior football. There is collaboration ongoing with Wharfedale Rugby Club to consider a multisport hub development	Investment in a detailed feasibility for the development of a sports hub in Wharfedale. Planning advice sought from YDNPA.	Grassington Adult and Junior Football Clubs in collaboration with Wharfedale Rugby Club CDC - sports development support YDNPA – planning support	Volunteer time FA RFU CDC Officer time YDNPA Officer time Funding to enable detailed feasibility to be undertaken.	Short High Priority
Wharfedale School - Grassington	Foot – 18 New	There is one pitch of poor quality which is used by the Grassington Sports Clubs to supplement other pitches. Pitch has very limited winter use due to drainage issues.	Engage in the discussions on the development of a multisport hub.	Wharfedale School	Senior School Management time	Short High Priority

		Any development of the pitch at Wharfedale should be linked into the wider consideration for multisport hub in Grassington.	Actively be part of a detailed feasibility as outlined in Foot -17.	CDC - sports development support YDNPA – planning support	CDC Officer time YDNPA Officer time Communihire Ltd time	
Gargrave	Foot – 19 New	The pitch quality has decreased since 2016. The FA Pitch Power tool to be used in the first instance to assess the condition and determine actions to improve the quality.	Club to register with Pitch Power, identify an action plan. CDC to assign developer contributions where applicable in line with Local Plan policies	Gargrave Football Club Gargrave Parish Council	Volunteer time FA Parish Council CDC	Medium High Priority

5. Cricket

ECB Five Year Plan : Inspiring a Generation 2020-2024

5.1 The ECB purpose states.

We connect communities and improve lives by inspiring people to discover and share their passion for cricket.

With the ambition that by 2024 a generation is inspired to say that “Cricket is a game for me”

5.2 The 2020-2024 priorities are.

- Grow and Nurture the Core – we will ensure that there’s a thriving county network at the heart of the domestic game.
- Inspire through Elite teams – we will create and celebrate the heroes at the pinnacle of the elite game.
- Make cricket accessible – we will give more people the opportunity to engage in cricket more often.
- Engage Children and Young People- We will inspire a new generation of player and fans to develop a love for cricket.
- Transform Women’s Cricket – We will drive cricket progress to becoming a truly gender-neutral sport.
- Support our communities – We will sue our purpose to connect communities and improve lives more broadly across society.

Consultation

5.3 Consultation was undertaken in June 2021, a survey was sent out to cricket clubs, schools, sports providers, and Parish Councils. The surveys were based on the Sport England PPS Guidance templates but adapted to gather key information most relevant to refreshing the PPS with the focus being on changes since 2016. Telephone consultation was undertaken where appropriate. The England Cricket Board and Yorkshire Cricket Board were consulted on the findings and recommendations. Feedback was received from:

Table 16 : Consultee Responses

Cricket Clubs	Parish Council – 19 returns of which the following responsible for pitches	Sports Providers	Education Sector
---------------	--	------------------	------------------

Cowling Cricket Club Sutton in Craven Cricket Club Upper Wharfedale Cricket Club Embsay Cricket Club Skipton Cricket Club Skipton Church Institute Cricket Club Ingleton Cricket Club Glusburn Cricket Club Settle Cricket Club Bradley Cricket Club	The survey responses indicated that Bradley Parish Councils own and rent the ground to Bradley CC, the club are responsible for the ground.	All clubs who responded indicated they owned or had secured long term leases. Skipton Church Institute – lease from NYCC. Skipton Cricket Club – Coulthurst Trust Upper Wharfedale Cricket Club – Gardeners Trust Ingleton – Ingleton Rural Community Association Settle CC – Langcliffe Estate	Giggleswick School Settle College
---	---	--	--------------------------------------

Supply

- 5.4 There has been one loss a of two pitches since 2016 at the former Malsis School site. The change in the data reflects this and the inclusion of Upper Wharfedale Cricket Club and Bolton Abbey Cricket Club who are located within the YDNPA. The Upper Wharfedale Cricket Club ground is also used for evening matches by Grassington , Threshfield and Linton Cricket Clubs who play in the Dales Evening League. Bolton Abbey Cricket Club play in the Nidderdale and District League and the juniors team in the Upper Airedale Junior Cricket league. All other clubs play in the Craven and District League with Skipton Cricket Club also having a team in the Aire and Wharfedale Cricket League.

Table 17 : Supply of Cricket Grass Pitches

Grass Pitches	2016	2021
Total sites	19	21
Total Pitches	21	21

- 5.5 A comparison with the detailed 2016 pitch quality assessments has been undertaken based on the information supplied by consultees. There have been no technical on site assessments undertaken, the pitch quality assessments are subjective based on consultee feedback. Detailed technical assessments supported by an agronomy report would be needed in the future to identify specific quality issues and

remedial actions. Based on the 2021 feedback it appears that the quality of provision has improved across the district, however up to date information is not available for all pitches.

Table18 : Quality Pitch Assessments Comparisons

2016		2021			
Site	Rating	Maintenance/Quality of pitches	Issues or Problems	Overall quality since 2016	Reason for Changes
Bentham Sports Field	Standard				Currently not in use as a cricket pitch
Bradley CC	Good	Good	Club has rated the maintenance undertaken as good but the overall quality as adequate	Adequate	Drainage poor, needs investment
Bolton Abbey					No information available
Cononley Sports Club	Good		overmarking with football		
Cowling Sports Club	Good	Good		Much better	
Ermysteds Grammar School	Good				School play cricket at Sandylands. No information available re: school site
Gargrave CC	Good				No information available
Giggleswick School	Good	Excellent 3 pitches	Outfield at Lords Playing Field uneven	Slightly better	Plans in place to level and resurface Lords Playing Field in 2021/2022 and to submit a planning application to build a new changing pavilion.
Giggleswick School	Good	Good 1 pitch			
Giggleswick School	Good				
Giggleswick School	Standard				
Glusburn CC	Good	Good	Two clubs from the Quaid-E-Azam Sunday league play at the ground.	Slightly better	Achieved through groundsmen's work and expertise

Ingleton Football & Cricket Field	Good	Good	Ground leased from Ingleton Rural Community Association. Club maintains the ground. Dog fouling an issue	Slightly better	New mobile nets. Next project to build new store for grounds equipment.
Malsis School	Standard	Closed			
Malsis School	Standard	Closed			
Rathmell & Wiggleworth CC (Closed)	Poor				
Royd Hill (Sutton in Craven CC)	Good	Good 2 pitches	Occasional social nuisance and dog fouling	Much better	The club have fortunately been able to invest in better equipment and soil management. Also added some additional pitches on our ground (with a 2nd square) which has relieved the pressure on our main square. Practice and junior games can now be undertaken on the 2nd square.
Settle CC	Good	Good	In addition to the club the ground and facilities are used by Settle College who play games here as do local primary schools. Usually we host a schools tournament and festival for 6-7 local schools. Local Rounders team play here, plus a over 50s walking cricket team have used the ground	Slightly better	Hard work by volunteer ground staff and investment by the club has led to the improvements.

Skipton CI CC	Standard	Adequate	Unofficial use becoming a problem. Condition of outfield including drainage.	Slightly better	Better equipment, newly laid square.
Skipton CC	Good	Good 2 pitches		Much better	Time spent by groundsman working on the square and money spent by the club improving the surface
The Robinson Memorial Ground (Embsay CC)	Good	Good	Outfield used for women's rounders	Much better	The groundman undertook a lot of work during the pandemic whilst cricket could not be played to improve the pitch. The club has additional volunteers to assist with the grounds maintenance.
Thornton-In- Craven CC	Standard				No information available
Upper Wharfedale		Good	Dog fouling now under better control after gates padlocked	Slightly better	Better team working on the ground

- 5.6 The 2016 PPS highlighted Royd Hill as being a top scoring site and this has been maintained. Embsay, Skipton and Cowling Cricket Clubs have all indicated the quality of their pitches is much better than in 2016. Upper Wharfedale Cricket Club have rated the pitch as good and that it has seen improvements since 2016.
- 5.7 In terms of ancillary facilities, Upper Wharfedale Cricket Club, Settle and Skipton Cricket Clubs indicated there is not enough pavilion space and Bradley Cricket Club and Skipton Cricket Club rated the facilities as poor. Skipton Cricket Club in partnerships with Skipton Town Juniors continue to address this issue which featured as a priority in the 2016 PPS and have secured planning permission for a community building with changing to serve both sports. Several clubs highlighted the issue of being able to provide suitable changing and toilet facilities for women and girls cricket.
- 5.8 Progress on the action plan which resulted from the 2016 PPS has continually been reviewed with the last formal report produced in 2019. Based on the feedback from consultation and other known information the current progress on the 2016 action plan is detailed below.

Table 19: 2016 PPS Action Plan Progress and 2021 Feedback from Consultees

Site 2016	Site 2021	Notes	Progress Update 2019	Feedback 2021
	AUSTWICK PLAYING FIELDS			No information
Bentham Sports Field	BENTHAM PLAYING FIELDS	No Grass Pitches Currently Marked Out		
	BOLTON ABBEY CRICKET CLUB	Within YDNPA		Two Senior and Two Junior teams.
Bradley CC	BRADLEY CRICKET CLUB		Crick-1 1 & 2 – Football pitch moved slightly closer to wicket so no room now for extra non turf wicket. Cricket Club have report on drainage and working up solution to this to improve links to the football pitch drains	<p>Drainage needs renewing and the outfield evenness needs improving.</p> <p>Quality of the changing rooms is poor, too small with no disability access or women's changing facilities.</p> <p>Clubs wants to improve the facilities to increase playing capacity and develop girls/women's cricket. Investment in new cricket nets required.</p> <p>Club has plans need permission from Parish Council.</p>
Cononley Sports Club	CONONLEY SPORTS CLUB		Crick -3 Club has progressed wicket covers with Grant Funding and support from CDC. Considering the non turf pitch plans.	Proposal to improve the drainage under development and will be progressed further at the end of 2021 cricket season will include gutters to garage block, work to ditches alongside cricket and football pitches. Plans to install artificial wicket.
Cowling Sports Club	COWLING SPORTS CLUB	Pitch/square 1 - No. of grass wickets - 10 Ground also		Laid artificial practice nets enclosed area and minimal work on drainage. More could be done.

		used by Sunday League teams		
Ermysteds Grammar School	ERMYSTED'S GRAMMAR SCHOOL	No Grass Pitches Currently Marked Out		School has submitted planning application (2021/22977/FUL) in June 2021 to replace the playing field with AGP due to the poor condition of the playing field which impacts on usage.
	FLOSHERS FIELD (Cracoe Cricket Club)	Near Cracoe within YDNP Does not appear to be in use. Formally Cracoe/Ryle stone Clubs		No information
Gargrave CC	GARGRAVE SPORTS FIELD	Play- Cricket.com indicates two senior teams		No information
Giggleswick School	GIGGLESWICK SCHOOL		4 pitches	Proposals to level and resurface the Lords Playing Field Cricket pitches outfield. Build a changing pavilion with community space. Settle Cricket Club and Rothwell Cricket Club occasionally use pitches. Settle Cricket Club hire sports hall for winter training.
Glusburn CC	GLUSBURN CRICKET CLUB			CCTV fitted to pavilion, portable defibrillator installed, scoreboard upgraded to enable connection to Play Cricket Scoring APP.
Ingleton Football & Cricket Field	INGLETON SPORTS FIELD		Cricket - 4 Install non-turf pitch permanent net facility at the sports club. Club has worked up a scheme and progressing,	New portable nets are in place. Need to build a grounds equipment storage.

			some local residential objections so on hold.	Changing facilities are rated as good but lack separate changing for officials and girls/women.
Malsis School	MALSIS SCHOOL (CLOSED)	Closed		
	RAMPER PARK	No Grass Pitches Currently Marked Out		
Rathmell & Wiggleworth CC (Closed)	RATHMELL AND WIGGLEWORTH CRICKET CLUB (CLOSED)	Closed		
Royd Hill	ROYD HILL (Sutton CRAVEN CC)	<p>Pitch/square 1 - No. of grass wickets - 10</p> <p>Pitch/square 2 - No. of grass wickets - 4</p> <p>Ground used by Sunday League team in addition to Main Club.</p>	Crick- 5 Confirm with club priority development (nets or mobile cage) awaiting confirmation from club	<p>New build pavilion and supporting clubhouse in 2016 meeting all SE/ECB specifications for cricket for both players and officials. The facilities are among the best.</p> <p>Since 2016 - Pitch quality much better. The club have fortunately been able to invest in better equipment and soil management. Also added some additional pitches on our ground(with a 2nd square) which has relieved the pressure on our main square. Practice and junior games can now be undertaken on the 2nd square. We have plans to replace our existing equipment storage.</p>
	SANDYLANDS GRASS PITCHES (NYCC)	See Skipton CIC - leased to SCC by Coulthurst Trust		

	SETTLE COLLEGE PLAYING FIELDS	1 pitch		Note Settle College also use Settle Cricket Club pitch. Grounds maintenance carried out e.g. verti draining to improve playing pitches
Settle CC	SETTLE CRICKET CLUB (MARSHFIELD GROUND)			New wall and store shed built to compensate for loss of storage and space as nearby development was built which included protective netting. Most recently installed 25 extra memorial benches to increase seating capacity. Pitches all winter dressed, new covers purchased. Would like to renovate old pavilion, increase kitchen capacity and toilets. Create space for women's changing. Training nets need upgrading, This is a very successful club at the heart of the community bringing sport to all ages with well used facilities. To bring the game to women and girls e.g. to offer additional changing facilities so they feel valued club members rather than an after thought. With 9 sides playing regularly there is pressure on the ground and had we not had access to Giggleswick School facilities for some junior games we would have struggled to support all teams
Skipton CI CC		Pitch/square 1 - No. of grass wickets - 7	Crick-6 Skipton CICC moved their wicket and pitch next to clubhouse and secured long lease from NYCC for site as this is club priority. Site now fenced off and club continuing to manage their site well.	Unofficial use becoming a problem. Condition of outfield including drainage. Since 2016 - Improved, Better equipment, newly laid square, new covers, new practice cage. New grounds equipment mower purchased, roller on order. Improved the changing rooms

Skipton CC	SKIPTON CRICKET CLUB	Pitch/square 1 - No. of grass wickets - 10 Pitch/square 2 - No. of grass wickets - 4	Crick 7 Planning permission secured and now working up finances on how to deliver the scheme. Costs coming in at around £1m. The £330k from Burnside housing development notionally allocated to support this. Ongoing feasibility for non-turf pitch	Pressure on parking spaces - shared parking area No changing for officials but plans passed for a new clubhouse/community hub in 2022/23. Issues: Rabbit holes, littering, unofficial use Since 2016 improvements - Time spent by groundsman working on the square and money spent by the club improving the surface
The Robinson Memorial Ground	THE ROBINSON MEMORIAL GROUND Embsay Cricket Club	Pitch/square 1 - No. of grass wickets - 10		The pitch and grounds have been improved. Concern regarding availability for car parking following the development on land next to the ground. There is a need to purchase covers this would require additional land for storage
Thornton-In- Craven CC	THORNTON-IN-CRAVEN CRICKET CLUB			Quality of pitch much improved since 2016. The amount of time spent working on the ground by the grounds team has improved pitch.

	UPPER WHARFEDALE CRICKET CLUB, WOOD LANE GRASSINGTON	Pitch/square 1 - No. of grass wickets - 10		<p>Car Parking if it's a dry day use the rugby field. Otherwise. difficult and cars park on road.</p> <p>Ancillary facilities - Not enough space, no separate female changing. Were adequate 30 years ago when built but limited cricket then compared to now.</p> <p>Dog fouling now under better control after gates padlocked.</p> <p>Pitch quality since 2016 slightly better. Better team working on the ground</p> <p>We have converted a room into a bar, funded a new electronic scoreboard, refitted the kitchen, bought mobile net cages, and converted the old scoreboard into an outside COVID friendly bar .</p> <p>Would love to be able to resurface the artificial nets and create new changing and toilet areas.</p>
--	--	---	--	---

Demand

- 5.9 Clubs were asked how many teams they expected to have in the full season 2021-2022, the clubs who provided feedback indicated that collectively they would have 54 teams. There were ten teams who responded to the PPS consultation in 2016 and they indicated that the total number of teams would be 54.
- 5.10 It can be assumed there has been a growth in cricket as by adding the data from 2016 to the clubs who did not respond in 2021 the total number of teams would be 59. Reviewing the ECB Play Cricket website confirms there has been a growth of not, is that Settle Cricket Club has a women's team and there are both boys and girls cricket teams at Settle and Ingleton Cricket Clubs. Bolton Abbey Cricket Club who was not included in the 2016 PPS have two senior teams. Upper Wharfedale Cricket Club have two senior teams and under13, under 11 and under 9's cricket teams.

5.11 The information from clubs who responded to the consultation is detailed below.

Table 20: Demand by number of teams

Club	No. of competitive teams				Total
	Senior men	Senior women	Juniors Boys	Junior Girls	
Cowling Cricket Club	2	0			2
Sutton-in-Craven Cricket Club	2		2		4
Upper Wharfedale Cricket Club	2	1	2	1	6
Embsay Cricket Club	2		2		4
Skipton Cricket Club	3		11	1	15
Skipton Church Institute	2		1	1	4
Glusburn Cricket Club	2				2
Ingleton Cricket Club	3		1	1	5
Settle Cricket Club	4	under development	3		7
Bradley Cricket Club	2		2	1	5
Total	24	1	24	5	54

Using the 2016 data from the clubs who did not response it is assumed that there would be 28 senior men's team, 25 junior boys teams equating to the total of 59 teams as suggested above.

- 5.12 Clubs were asked about the participation in junior coaching sessions for the under 11's age group. There was junior coaching taking place at all the clubs who responded to the consultation and both girls and boys are participating in cricket. Most clubs have in the region of 11 – 20 participants in each of the under 11's and under 9's age groups. Skipton Cricket Club have a large number of juniors; within the region of 40 participants at under 11's and over 50 participants at under 9's
- 5.13 Skipton Cricket Club achieved disability cricket status in 2020 and offers a range of activity for both adults and children with physical and learning disabilities. Post covid weekly sessions have grown from around 6-8 people to over 20.
- 5.14 The feedback from clubs indicated that in comparison to the season 2018-2019, pre Covid, most clubs, other than Sutton in Craven had seen the number of teams stay the same. Although Sutton in Craven have seen a reduction in the number of senior players they are

looking to launch girls and women's cricket in 2021. There has been a small increase in numbers particularly for lower age ranges of junior cricket.

- 5.15 Settle Cricket Club indicated that they are undertaking significant work to rebuild post covid 19 and have taken a cricket programme into seven local primary schools, they have some 80 junior players registered with the numbers being rebuilt at the lower age groups, with more work to be done at over 11's. There is a need for qualified coaches to enable the rebuilding, growth, and development.

Table 21: Expected impact of Covid 19

Do you expect your current team numbers to increase, decrease or stay the same ?												
Name of Club	Junior Under 13s Boys	Junior Under 13s Girls	Junior Under 15s Boys	Junior Under 15s Girls	Junior Under 17s Boys	Junior Under 17s Girls	Over 18s Senior Men	Over 18s Senior Women	Junior Under 11s Boys	Junior Under 11s Girls	Junior Under 9s Boys	Junior Under 9s Girls
Cowling Cricket Club	Decreased	Stayed the same	Decreased	Stayed the same	Stayed the same	Stayed the same	Stayed the same	Stayed the same	Increased	Increased	Increased	Increased
Sutton-in-Craven Cricket Club	Stayed the same	Stayed the same	Stayed the same	Decreased	Stayed the same	Decreased	Decreased	Decreased	Stayed the same	Stayed the same	Stayed the same	Stayed the same
Upper Wharfedale.	Increased	Increased	Stayed the same	Decreased	Stayed the same	Stayed the same	Increased	Increased	Increased	Increased	Increased	Increased
Embsay Cricket Club	Stayed the same	Stayed the same	Decreased	Stayed the same	Stayed the same	Stayed the same	Stayed the same	Stayed the same	Stayed the same	Stayed the same	Stayed the same	Stayed the same
Skipton CC	Stayed the same	Increased	Stayed the same	Stayed the same	Stayed the same	Stayed the same	Increased	Stayed the same	Increased	Increased	Increased	Increased
Skipton Church Institute	Increased	Increased	Stayed the same	Stayed the same	Stayed the same	Stayed the same	Stayed the same	Stayed the same	Increased	Increased	Stayed the same	Stayed the same
Skipton CC	Stayed the same	Stayed the same	Stayed the same	Stayed the same	Stayed the same	Stayed the same	Stayed the same	Stayed the same	Stayed the same	Stayed the same	Increased	Increased
Gusburn CC								Stayed the same				
Ingleton CC	Stayed the same	Stayed the same	Stayed the same	Stayed the same	Stayed the same	Stayed the same	Stayed the same	Stayed the same	Stayed the same	Stayed the same	Stayed the same	Stayed the same
Settle Cricket Club							Increased	Increased	Decreased		Increased	Increased
Bradley Cricket Club	Decreased	Decreased	Decreased	Decreased	Decreased	Decreased	Decreased	Decreased	Decreased	Decreased	Decreased	Decreased

- 5.16 The 2016 PPS indicated that there would be a future demand for more teams particularly youth boys cricket. With 1.8 additional youth boys teams required based on the population and 0.8 teams for adult males.
- 5.17 Team Generation Rates (TGR) provide an indication of how many people it may take to generate a team. TGR considers current and future populations and what this potential change across the sport and age groups may mean for playing pitches in the future. Using the Sport England TGR calculator, the TGR for Craven as of 2021 are:

Table 22: TGR Rates 2021

Sport and Age Groups	Number of teams in age group within the area	Current population in age group within the area (2021)	Future population in age group within the area (2032)	Current TGR	Population Change in Age Group	Potential Change in Team Numbers in Age Group
Cricket Open Age Men's (18-55yrs)	28	11,162.00	10,704.00	398.64	-458	-1.15
Cricket Open Age Women's (18-55yrs)	1	11,612.00	11,054.00	11612.00	-558	-0.05
Cricket Junior Boys (7-18yrs)	25	3,832.00	3,580.00	153.28	-252	-1.64
Cricket Junior Girls (7-18yrs)	4	3,462.00	3,279.00	865.50	-183	-0.21
Current TGR is the number of people required to generate one team e.g. 398.64 male adults aged 18-55 years is needed to generate one team in 2021. With the change in population by 2032 the number of teams in the age group will decrease by -1.15.						

- 5.18 There is likely to be a slight decrease in demand across all cricket teams as the population changes through to 2032. However, whilst the data might suggest a decrease, with national programmes to develop women's and girls' cricket it is expected that demand for playing pitches would increase with future growth. It is notable that several clubs have highlighted the need to be able to accommodate women's and girls cricket and that dedicated changing and toilet facilities are not available at their grounds.

Supply and Demand Balance

- 5.19 Given the updated information on supply and demand and the light touch approach to the PPS refresh it is reasonable to conclude that there is sufficient supply of secured pitches to meet current and future changes in demand for pitches. Therefore, pitches need to be protected.
- 5.20 However, it is important to ensure that where the quality of pitches is good this is at least maintained and where required the quality of pitches improved. The ECB have resources available in partnership with Grounds Management Association (GMA) which act as reference point for cricket club volunteers to find practical guidance on maintaining and developing their ground.
- 5.21 Enhancement of changing facilities and cricket nets will enable clubs to continue to develop the game and open up to more women and girls and disability cricket.

Key Findings for Cricket

- 5.22 The supply and demand results indicate that overall that there is sufficient capacity across the district of cricket pitches. Changing accommodation limits the growth of cricket through the ability to provide changing for both male and females at Upper Wharfedale, Settle and Ingleton Cricket Clubs. The development of the new build pavilion at Skipton Cricket Club will provide suitable changing for male and female players.
- 5.23 Enhancements have been made since 2016 which include:
- Planning permission has been granted for the development of a multisport club house at Skipton Cricket in a partnership between the cricket club and Skipton Town Juniors. The securing of funding to deliver the project is a priority for the club.
 - Sutton in Craven Cricket Club have added a second square and have a new pavilion.
 - Skipton CIC have secured a long term lease and been able to move the wicket and make improvements to the pitch.
 - Ingleton Cricket Club have purchased portable cricket nets.
 - There are number of cricket clubs who have invested financially and in volunteer time to make improvements to the quality of the pitches and ancillary facilities. Feedback from clubs indicates that there is a continued commitment towards enhancing the provision available.

- 5.24 Giggleswick Schools proposed pitch and changing room developments at the Lords Playing Field site will enhance the provision for both education and community use. A planning application has not been submitted to date, as part of any planning application securing a community use agreement would need be linked to the pitch and changing facility development to increase the supply of community secured pitches. The school pitches are used by Settle Cricket Club without which the club would struggle to accommodate all teams.
- 5.25 Little progress has been made on a collaborative pitch maintenance programme for the district. The geography of the district to a certain extent makes this more restrictive. However, in locations such as Sandylands where there are several sports clubs this would be more realistic. Clubs can seek support through the ECB partnership with Grounds Management Association where resources are available which act as reference point for cricket club volunteers to find practical; guidance on maintaining and developing their ground.

Recommended Action Plan

- 5.26 The recommended action plan includes existing actions from 2016 which remain relevant and appropriate and new actions based on the information and issues which have emerged during the PPS Refresh study. The format of the action plan follows on from the 2016 PPS.
- 5.27 It should be noted the actions in relation to clubs based in the area known as Sandylands, i.e. Skipton Cricket Club, Skipton CI Cricket Club are linked to the football and rugby and AGP action plans. Similarly, this applies to the development and improvement of sports pitches in Grassington/Threshfield, Wharfedale.

Table 23 : PPS Refresh 2021 Cricket Action Plan

Site	Action ID	Issue/Opportunity to be addressed Key Actions	Specific Actions	Lead (Bold) and Partners	Resource Implications	Timescales and Priorities Short 1-3 years Medium 3-5 years Long 6-10 years
Bradley Cricket Club	Crick -1 Updated	The club has identified a requirement for an additional training facilities. Require and additional grass wicket to allow teams to practice on edge of square.	Identify funding opportunities and submit bids	Bradley Cricket Club Bradley Parish Council	Volunteer time Funding	Short Medium Priority

		<p>Improvements to drainage required.</p> <p>Recommended Revised Action: Project plan and cost the works required for drainage and secure funding.</p> <p>Identify funding to purchase new cricket nets</p> <p>Negotiate with the Parish Council and develop a partnership approach.</p>	<p>CDC to assign developer contributions where applicable in line with Local Plan policies</p>	<p>CDC</p> <p>ECB – YCB (Yorkshire Cricket Board)</p> <p>GMA (Grounds Management Association)</p>		
Cononley Sports Club	<p>Crick 2</p> <p>Updated</p>	<p>The site suffers from drainage issues and moles. The club are looking to extend the pitch in order to reduce overmarking with football.</p> <p>Recommended Revised Action: Plan and gain funds should be used to engage an agronomist to undertake a study to recommend an action plan to resolve the pitch conditions for both cricket and football. Action cross references with Foot-5</p>	<p>Partnership working between football and cricket clubs supported by CDC to engage a qualified agronomist.</p> <p>Review outcome of agronomist study and plan accordingly.</p> <p>Current proposal includes work to ditches and installation of artificial wicket, progress proposed solutions.</p>	<p>Cononley Sports Club</p> <p>CDC</p> <p>(FA and ECB, YCB)</p>	<p>Volunteer time</p> <p>CDC officer time</p> <p>Planning gain funds (secured)</p>	<p>Short</p> <p>High priority</p>
Cowling Sports Club	<p>Crick -3</p> <p>Updated</p>	<p>There has been some work done on drainage but more work would improve the pitches.</p> <p>The installation of practice nets has been completed.</p> <p>Recommended Revised Action:</p>	<p>Identify funding opportunities and submit bids</p> <p>CDC to assign developer contributions</p>	<p>Cowling Sports Club</p> <p>ECB- YCB County Pitch Advisor and GMA</p> <p>CDC</p>	<p>Volunteer time</p> <p>ECB – YCB Officer time</p> <p>CDC Officer time</p>	<p>Medium</p> <p>Medium Priority</p>

		Club to undertake further drainage works.	where applicable in line with Local Plan policies			
Ingleton Football and Cricket Field	Crick – 4 Updated	<p>A requirement has been identified for an additional practice facilities. Club would like permanent non -turf practice nets to replace or complement the current non-turf pitch they use with a temporary net on the square. Mobile practice nets now available.</p> <p>Recommended Revised Action: The building of storage facility for the ground maintenance equipment.</p>	<p>Identify funding opportunities and submit bids</p> <p>CDC to assign developer contributions where applicable in line with Local Plan policies</p>	<p>Ingleton Cricket Club</p> <p>ECB - YCB</p>	Volunteer time	
Royd Hill (Sutton in Craven CC)	Crick -5 Updated	<p>Club identified need for mobile cage. Identified need for Non turf pitch to reduce demand on grass pitches.</p> <p>Club have new clubhouse and 2nd pitch which has reduced the pressure on pitches. Less of a priority for the mobile cage now exists.</p>	<p>Identify funding opportunities and submit bids</p> <p>CDC to assign developer contributions where applicable in line with Local Plan policies</p>	Sutton in Craven Cricket Cub	Volunteer time	Medium Low Priority
Skipton Church Institute Cricket Club	Crick -6 Updated	<p>Club completed moving the square to nearer the closer to the clubhouse.</p> <p>Recommended Revised Action: Improve drainage to the outfield Opportunity for working with Skipton Cricket Club for example on shared training facilities such as cages</p>	<p>Continue to develop a working relationship with Skipton Cricket Club for the mutual benefit of both clubs</p> <p>Identify funding opportunities and submit bids</p> <p>CDC to assign developer contributions</p>	<p>Skipton CIC</p> <p>Skipton CC</p> <p>CDC</p>	<p>Volunteer time</p> <p>CDC Officer time</p> <p>ECB- YCB Officer time</p>	Ongoing

			where applicable in line with Local Plan policies			
Skipton Cricket Club	Crick -7 Updated	<p>Club has secured planning permission for new multisport club house. Funding required to complete the project. Project has developed in partnership with Skipton Town Juniors FC.</p> <p>This will enable Skipton Juniors FC who are working together with Skipton Cricket Club to potentially access external grants for pitch improvement and the new multisport club house which has secured planning permission.</p>	<p>Identify funding opportunities and submit bids</p> <p>Project Plan for the construction and development of the proposed facility.</p> <p>Partnership working to be developed to be developed with Skipton Juniors FC and other sports clubs to maximise the opportunities of new facility.</p> <p>CDC to assign developer contributions where applicable in line with Local Plan policies</p>	<p>Skipton CC</p> <p>Skipton Town Juniors FC and other sports clubs</p> <p>CDC</p> <p>ECB, YCB and FA</p>	<p>Volunteer time</p> <p>CDC officer support</p> <p>ECB- YCB Officer time</p>	<p>Short</p> <p>High Priority</p>
Upper Wharfedale Cricket Club	Crick -8 New	Development of Changing facilities to support the growth of cricket in the club, and to be able to offer female changing facilities.	<p>Feasibility study to understand the need and sustainability.</p> <p>Club to link with the wider sports club network in Grassington/Wharfedale in discussions about multisport hub</p>	<p>Upper Wharfedale Cricket Club</p> <p>ECB, YCB</p> <p>YDNPA</p>	<p>Volunteer time</p> <p>YDNPA Officer time</p> <p>CDC Officer time</p> <p>ECB – YCB Officer time</p>	<p>Medium</p> <p>Medium Priority</p>

Giggleswick School	Crick -9 New	<p>School intending to submit planning application to upgrade the Lords Playing Field which will improve the cricket outfield.</p> <p>The proposal includes new changing rooms and club house with social space and kitchen.</p> <p>The improved and enhanced facilities will be an asset to the school and the wider sporting community. It will be important to ensure that community access is available.</p>	CDC to work with Giggleswick School to ensure that a formal Community Use Agreement (CUA) enables access for cricket and other community groups.	Giggleswick School Craven District Council	<p>School Senior Management team</p> <p>CDC Officer time</p>	<p>High</p> <p>High priority</p>
<p>The Robinson Memorial Ground</p> <p>Embsay Cricket Ground</p>	Crick – 10 New	<p>Club to undertake a feasibility to be able to purchase and store covers.</p> <p>Should the proposed football pitches be granted planning permission (Foot-6) adjacent to the ground presents an opportunity to negotiate access to additional car parking.</p>	<p>Partnership work with landowners.</p> <p>Identify funding opportunities and submit bids</p> <p>CDC to assign developer contributions where applicable in line with Local Plan policies</p>	Embsay Cricket Club ECB, YCB	<p>Volunteer time</p> <p>CDC Officer time</p>	<p>Medium</p> <p>Medium priority</p>
Settle Cricket Club	Crick -11 New	<p>Capacity of changing and pavilion to support and develop women and girls cricket at the club.</p> <p>Condition of training nets.</p> <p>Access to additional pitch to accommodate current and potential growth of teams.</p>	<p>Project plan to look at feasibility and costs to upgrade the pavilion and training nets.</p> <p>Identify funding opportunities and submit bids</p> <p>CDC to assign developer contributions where applicable in line with Local Plan policies</p>	Settle Cricket Club ECB, YCB Craven District Council	<p>Volunteer time</p> <p>CDC officer time</p>	<p>Medium</p> <p>Medium Priority</p>

			Inform the Community Use Agreement highlighted in Crick-9 to enable access to additional pitches			
All Clubs	Crick- 12 New	PPS 2016 identified the action to develop and fund an equipment bank for maintenance machinery and benefit from additional maintenance training. Not been achieved or progressed. Cricket Clubs should access the Groundcare resources via the ECB website Cricket Home Grounds Management Toolkit (thegma.org.uk)	Clubs to access resources	Cricket Clubs	Volunteer time	Short High Priority

6. Rugby Union

Rugby Union

6.1 The Rugby Football Union (RFU) England Rugby Strategy has a vision for a Successful and Thriving Game across England 2021 identifies:

Our Purpose – To enrich lives, introduce more people to rugby and develop the sport for future generations.

6.2 The RFU have eight priorities which are:

- Enabling positive, enjoyable player experiences
- Creating the best possible high-performance system
- Enhancing player welfare
- Supporting clubs to sustain and grow themselves
- Driving rugby union to reflect the diversity of society
- Building a deep understanding of players, volunteers, and fans to shape future of the game
- Connect with and grow the rugby community
- Ensure a sustainable and efficient business model delivered by inspired workforce.

6.3 In terms of grass roots club rugby, the RFU are looking to:

- Improve accessibility for women and girls across the game
- Make the game inclusive and attractive for 14 to 18 year olds
- Redefine playing opportunities, structures, and competitions for current and future players, recognising the strategic importance of the adult male game
- Develop match officials and coaches in the community game to enhance player enjoyment
- Provide support to club and volunteers so they can attract new, diverse volunteers and help clubs to be fit for the future and self-sustaining Provide support to help clubs maximise the benefit from their facilities and assets
- Help clubs manage their risk and liabilities
- Improve the diversity of all facets of our game and continue to create an inclusive environment for all

Consultation

- 6.4 Consultation was undertaken in June 2021, a survey was sent out to rugby union clubs, schools, sports providers, and Parish Council. The surveys were based on the Sport England PPS Guidance templates but adapted to gather key information most relevant to refreshing the PPS with the focus being on changes since 2016. Telephone consultation was undertaken where appropriate. Rugby Football Union (RFU) were consulted on the findings and recommendations. Feedback was received from:

Table 24 : Consultee Responses

Rugby Clubs	Parish Council – 19 returns of which the following responsible for pitches	Sports Providers	Education Sector
North Ribblesdale RUFC (Settle) Skipton RUFC Wharfedale RUFC (Grassington)	Giggleswick Parish Council have responsibility for pitches at Harrison Road Playing Field. Harrison Playing Field is hired to North Ribblesdale RUFC as they require additional capacity for junior rugby.	All clubs who responded indicated they owned or had secured long term leases. Coulthurst Trust lease ground to Skipton Rugby Club. Gardener Trust lease the ground to Wharfedale Rugby Club	Giggleswick School Settle College Skipton Academy South Craven School Upper Wharfedale School

Supply

- 6.5 There has been a loss of pitches since 2016 at the former Malsis School site however, there has been an overall increase in provision from the 2016 report. The change in the data reflects this and the inclusion of Wharfedale Rugby Club, Upper Wharfedale School and the G.F. Gardener Trust Memorial Ground all in Grassington/Threshfield within the YDNPA. The Harrison Road site in Settle was not included in the 2016 study, North Ribblesdale Rugby Club use the site for junior rugby. Additional pitches have been identified since 2016 at Sandylands and Giggleswick School, and Settle College. There are three rugby union clubs in the district Skipton RFC , North Ribblesdale RFC (Settle) and Wharfedale RFC (Grassington).

Table 25 : Supply of Grass Pitches

Grass Pitches	2016	Senior	Junior	2021	Senior	Junior
Total sites	8			11		
Total Pitches	23	17	6	34	25	9

- 6.6 The 2016 PPS highlighted that Giggleswick School were looking to develop a World Rugby Regulation 22 AGP. However, those plans have been superseded and the school has developed a scheme to undertake significant pitch improvement works at the Lords Playing Field which will result in two high quality senior rugby union pitches and an improved cricket outfield. The plan includes new changing rooms with kitchen and community/social space. It is expected that a planning application will be submitted before the end of 2021
- 6.7 A comparison with the detailed 2016 pitch quality assessments has been undertaken based on the information supplied by consultees. There have been no on-site technical assessments undertaken, the pitch quality assessments are subjective based on consultee feedback. Detailed technical assessments supported by an agronomy report would be needed in the future to identify specific quality issues and remedial actions. Based on the feedback the quality of pitch provision has generally improved across the district.

Table 26 : Quality Pitch Assessments Comparisons

Site	2016	Rating 2021 Based on Survey Feedback		Reason for change
		Maintenance/ Quality of pitches	Overall quality since 2016	
GIGGLESWICK SCHOOL	Adequate	Excellent	Slightly Better	Continued grounds maintenance works
GIGGLESWICK SCHOOL (LORDS PLAYING FIELD)	Adequate	Adequate	No Difference	Proposals developed for pitch improvements
GROVE PARK - North Ribblesdale Rugby Club	Adequate	Good	Slightly Better	Second pitch much better due to major pitch works

GROVE PARK	Poor	Good	Much Better	
HARRISON PLAYING FIELD		Adequate	Slightly Better	Parish Council and North Ribblesdale Club work together to maintain and prepare pitches
SANDYLANDS GRASS PITCHES	Poor	Good	Slightly Better	
SETTLE COLLEGE PLAYING FIELDS	Poor	Adequate	Slightly Better	Verti draining work undertaken in summer
THE SKIPTON ACADEMY	Poor	Poor	No Difference	
SKIPTON RUGBY CLUB	Adequate	Adequate	Slightly Better	Total resurfacing of one pitch
SOUTH CRAVEN SCHOOL	Poor	Adequate		
THE G.F. GARDENER TRUST MEMORIAL GROUND				
UPPER WHARFEDALE SCHOOL		Poor		One grass pitch used for all sports
WHARFEDALE RUGBY UNION FOOTBALL CLUB		Adequate	Slightly Better	Improved drainage to both full sized pitches. 2nd team pitch has been recently levelled

- 6.8 The 2016 PPS highlighted pitches were poor at Sandylands Grass Pitches, Skipton Academy and South Craven School and the second pitch at North Ribblesdale Rugby Club. There has only been a significant improvement at North Ribblesdale Rugby Club, Grove Park through major drainage works on the second pitch. All other pitches are poor or adequate except for Giggleswick School and Grove Park, although information suggests the pitches are poor/adequate there has been proactive work to make improvements particularly at Harrison Road Playing Fields and Wharfedale Rugby Club, however the quality of the pitches at the latter in 2016 is unknown as the sites were not previously included.
- 6.9 The three rugby union clubs rated their ancillary facilities; Skipton and North Ribblesdale rated their facilities as adequate and Wharfedale as poor. The key points highlighted by the clubs were.

Table 27 : Quality of Ancillary Provision

Club	Comments
North Ribblesdale RFC	Further changing rooms needed to accommodate number of teams and upgrade showers and toilets. The Club are looking to build an extension to make 2 further changing rooms to accommodate their current and future demand levels
Skipton RFC	Upgrading of the flood lights on the second pitch would help extend the available training space and it would then be possible to have multiple teams training at the same time. It should be noted, however, that this will increase the number of match equivalent sessions accommodated on said pitch. The perimeter fencing for the 1st team pitch, which is a league requirement needs replacing as a priority, it was first installed over 50 years ago. The club is exploring options to finance this project. The second pitch requires more work such as reseeding and the ongoing rabbit damage causes problems. In the future the condition of the stand will need addressing.
Wharfedale RFC	Existing changing rooms undersized and not in an ideal state of upkeep. No facilities for dedicated female change or dedicated female match official changing. Medical room undersized for number of players. 600-800 spectators regularly for Saturday home matches. Current parking requires use of a field which is weather dependent. As a result cars park on the road verge as well which isn't ideal. A dedicated, hard standing parking area is required. The Club has significant aspirations to enhance both pitch and ancillary provision on the site, providing good quality, modern facilities to both male and female participants, officials and spectators.

- 6.10 Progress on the action plan which resulted from the 2016 PPS has continually been reviewed with the last formal report produced in 2019. Based on the feedback from consultation and other known information the current progress on the 2016 action plan is detailed below and is combined with feedback regarding all pitches from consultees.

Table 28 : Action Plan Progress and Feedback from Consultees 2021

Site 2016	Type of Pitch	Site 2021	Type of Pitch	Notes	Progress Update 2019	Feedback 2021
		FIRTH STREET RECREATION GROUND (CLOSED)	Junior Rugby Union	Closed		
Giggleswick School	Junior Rugby Union	GIGGLESWICK SCHOOL	Junior Rugby Union		Rug- 1 the school is currently looking to develop a full size World Rugby 22 3G pitch, which would have a formal community use agreement for peak hours. Scheme has been worked up and awaiting next stage of planning application	School no longer looking to develop a full size World Rugby 22 3G pitch. Alternative project is; Planning application to be submitted to redevelop the Lords Playing Field to level and improve the ground and build new changing rooms with club house with kitchen and community/social space. Intention to enter into a community use agreement. School have consulted locally with Parish Council and North Ribblesdale RC.
Giggleswick School	Junior Rugby Union	GIGGLESWICK SCHOOL	Junior Rugby Union			
Giggleswick School	Junior Rugby Union	GIGGLESWICK SCHOOL	Junior Rugby Union			
Giggleswick School	Junior Rugby Union	GIGGLESWICK SCHOOL	Senior Rugby Union			
Giggleswick School	Senior Rugby Union	GIGGLESWICK SCHOOL	Senior Rugby Union			
Giggleswick School	Senior Rugby Union	GIGGLESWICK SCHOOL	Senior Rugby Union			
Giggleswick School	Senior Rugby Union	GIGGLESWICK SCHOOL	Senior Rugby Union			
Giggleswick School	Senior Rugby Union	GIGGLESWICK SCHOOL (LORDS PLAYING FIELD)	Senior Rugby Union			

		GIGGLESWICK SCHOOL (LORDS PLAYING FIELD)	Senior Rugby Union			
Grove Park – North Ribblesdale RUFC	Senior Rugby Union	GROVE PARK	Senior Rugby Union		Rug -2 Pitch works complete and into establishment period. Await School actions Club has identified clubhouse extension is their next priority to cater for women's teams to have separate changing spaces and a small gym	Further changing rooms needed to accommodate number of teams and upgrade showers and toilets. NGB Officer Feedback - Development and growth at North Ribblesdale; pitch improvement works have supported this, however the growth of female participation has increased and added capacity challenges. The improved pitches is supporting this, however changing rooms access and quality is no longer fit for purpose. The club have developed plans to address this and are near to starting to cost and consider funding options for this Quality of pitches much better since 2016. Second pitch much better due to a major project. Although undulation on first pitch has got worse. Club uses grass and AGP pitches at Giggleswick School and the Harrison Playing Field. Problem areas still exist.
Grove Park – North Ribblesdale RUFC	Senior Rugby Union	GROVE PARK	Senior Rugby Union			

		HARRISON PLAYING FIELD	Senior Rugby Union	Used for junior rugby by North Ribblesdale Rugby Club		<p>Pitches leased to North Ribblesdale by Giggleswick Parish Council. Rate quality overall as adequate and the quality is slightly better than in 2016.</p> <p>There currently is a public right of way across the pitch so dog fouling can be an issue. The pitch has to be checked each time before play and training sessions (The club regularly uses the site for the junior section training).</p> <p>The parish council has employed a new mowing contractor and the club contribute to the maintenance and upkeep of the site.</p> <p>The landowners of the site opposite, and independent school, are developing a sports pavilion which will have community access and will therefore provide changing and toilet facilities which the club can have access to. The council is additionally investigating a change of route for the public right of way.</p>
Malsis School	Senior Rugby Union	MALSIS SCHOOL (CLOSED)	Senior Rugby Union	Closed	Development of site has taken place. Football pitches developed and used by Sutton Juniors FC	
		NORTH PARADE RECREATION GROUND (CLOSED)	Junior Rugby Union	Closed		

		SANDYLANDS GRASS PITCHES	Senior Rugby Union		Rug -3 progressing as pitch swap with Skipton CICC and ongoing works with Football club to improve whole ground	Skipton CIC have moved cricket pitch nearer to pavilion. Wider discussions about the Sandylands site have been undertaken involving all clubs on the site. RFU NGB Officer feedback no major progress. Continues as a priority area to develop from a RFU perspective and as a cross sport approach.
Sandylands Grass Pitches	Senior Rugby Union	SANDYLANDS GRASS PITCHES	Senior Rugby Union			
Settle CE Primary School	Junior Rugby Union					No additional information
		SETTLE COLLEGE PLAYING FIELDS	Junior Rugby Union			Annual pitch maintenance plan in place
		SETTLE COLLEGE PLAYING FIELDS	Senior Rugby League			Rugby pitches not used by external clubs. (Football pitches re used by local clubs) Schools ability to hire to the local community affected by staff availability.
Skipton Academy	Senior Rugby Union	THE SKIPTON ACADEMY	Senior Rugby Union			Pitch has combined rugby/football goals
Skipton Rugby Football Club	Senior Rugby Union	SKIPTON RUGBY CLUB	Senior Rugby Union		Rug-4 club looking at side lighting, temporary floodlighting in line with recommendation and potential planning gain Awaiting development on this action to undertake drainage improvements on 3rd team pitch	Pitches slightly better quality since 2016. Problem areas still exist. Pitch has been re-laid.

Skipton Rugby Football Club	Senior Rugby Union	SKIPTON RUGBY CLUB	Senior Rugby Union		Club has invested in new lift at clubhouse with some planning gain to improve access to clubhouse	Upgrading of the flood lights on the second pitch would help extend the available training space and it would then be possible to have multiple teams training at the same time which would be better.
Skipton Rugby Football Club	Senior Rugby Union	SKIPTON RUGBY CLUB	Senior Rugby Union			<p>The perimeter fencing for the 1st team pitch, which is a league requirement needs replacing as a priority, it was first installed over 50 years ago</p> <p>The second pitch requires more work such as reseeding and the ongoing rabbit damage causes problems.</p> <p>In the future the condition of the stand will need addressing.</p>
South Craven School	Senior Rugby Union	SOUTH CRAVEN SCHOOL	Senior Rugby Union			School consultation confirmed 2 Senior, 1 Junior
South Craven School	Senior Rugby Union	SOUTH CRAVEN SCHOOL	Senior Rugby Union			
South Craven School	Senior Rugby Union	SOUTH CRAVEN SCHOOL	Senior Rugby Union Junior Rugby			
		THE G.F. GARDENER TRUST MEMORIAL GROUND	Senior Rugby Union	No Grass Pitches Currently Marked Out	Next to Wharfedale Cricket Club	

		UPPER WHARFEDALE SCHOOL	Junior Rugby Union	National Lottery Community Fund Oct 2019 for Out and About Rugby Project £10K	Used by Wharfedale Junior rugby at weekends	One pitch which serves rugby, football i.e. All sports. Local junior rugby club hire the pitch. There is no drainage on the pitches, so during winter months we are unable to use them. If there was scope for improvement, there is reasonable space for adequate pitches or 4G, but we don't have any funding to improve these facilities. If we had a 4G pitch the local sports club could use it more regularly and all year round. We have to limit external use to ensure the pitch is in a reasonable condition for school use.
		UPPER WHARFEDALE SCHOOL	Senior Rugby Union			
		WHARFEDALE RUGBY UNION FOOTBALL CLUB	Mini Rugby Union			<p>Existing changing rooms undersized and not in an ideal state of upkeep.</p> <p>No facilities for dedicated female change or dedicated female match official change.</p> <p>Medical room undersized for number of players.</p> <p>600-800 spectators regularly for Saturday home matches. Current parking requires use of a field which is weather dependent. As a result cars park on the road verge as well which isn't ideal. A dedicated, all-weather parking area is required.</p>
		WHARFEDALE RUGBY UNION FOOTBALL CLUB	Senior Rugby Union			
		WHARFEDALE RUGBY UNION FOOTBALL CLUB	Senior Rugby Union			

		WHARFEDALE RUGBY UNION FOOTBALL CLUB	Senior Rugby Union			<p>Improved drainage to both full sized pitches. 2nd team pitch has been recently levelled. Quality of pitches slightly better since 2016. Club uses additional grass pitch at Upper Wharfedale School</p> <p>Have had preapplication conversations with YDNPA planning about. Have started to develop " Wharfedale Sports hub for the Dales"</p> <p>1) Additional pitch(es) required to cater to the number of teams and increasing trajectory of participation. 2) All weather surface is vital to allow training / playing in the Winter months. Currently, in poor weather, in order to protect the grass pitches, matches/ training are cancelled or players have to travel to Keighley to play there. (It's a 50 mile round trip from Kettlewell to Keighley which does demonstrate the issues we face).</p> <p>3) Additional changing rooms required. 4) Dedicated changing rooms for Female players required. 5) Dedicated changing rooms for Female match officials required. 6) Additional rooms for training of Apprenticeships / classrooms. 7) Additional kitchen capacity. 8) Additional hospitality area / function room</p>
--	--	--	-----------------------	--	--	---

Demand

- 6.11 Clubs were asked how many teams they expected to have in the full season 2021-2022. The three clubs, Skipton, North Ribblesdale and Wharfedale provided feedback and indicated that collectively they would have 44 teams. Only Skipton and North Ribblesdale were included in the 2016 PPS where the number of teams was 22. The growth in teams is not wholly due to the inclusion of Wharfedale Rugby Club, Skipton and North Ribblesdale have seen an increases in teams since 2016.

Table 29: Demand by number of teams 2021

Name of Club	Mini/Midi U7-U12's	Youth U13-U17's Boys/Men	Youth U13-U17's Girls/Women	Colts U18-U19 Boys/Men	Colts U18-U19 Girls/Women	Senior Boys/Men	Senior Girls/Women	
North Ribblesdale	6	2	1	1	0	2	1	13
Skipton RFC	6	3			0	2	1	12
Wharfedale RUFC	6	5	2	1	1	4		19
Total	18	10	3	2	1	8	2	44

- 6.12 The feedback from clubs indicated that in comparison to the season 2018-2019, pre Covid, there has only been a decrease at the senior level at Skipton Rugby Club. The area of growth is in senior women's rugby with all other levels remaining the same. Feedback from clubs indicated they had been proactive during Covid to keep members engaged.

Table 30: Impact of Covid 19 on participation

Name of Club	Mini/Midi U7-U12's	Youth U13-U17's - Boys	Youth U13-U17's - Girls	Colts U18-U19 - Girls	Colts U18-U19 Boys	Senior Men	Senior Women
North Ribblesdale	Stayed the same	Stayed the same	Stayed the same	Stayed the same	Stayed the same	Stayed the same	Increased
Skipton RFC	Stayed the same	Stayed the same				Decreased	Increased
Wharfedale RUFC	Stayed the same	Stayed the same	Stayed the same	Stayed the same	Stayed the same	Stayed the same	Stayed the same

- 6.13 In addition to the above, touch rugby takes place at all clubs and walking rugby takes place at North Ribblesdale and Wharfedale.

- 6.14 The 2016 PPS indicated that there would be a future demand for more teams with mini and midi the largest area of growth with 1.2 teams and a 0.5 growth in teams at youth and senior rugby.
- 6.15 Team Generation Rates (TGR) provide an indication of how many people it may take to generate a team. TGR considers current and future populations and what this potential change across the sport and age groups may mean for playing pitches in the future. Using the Sport England TGR calculator, the TGR for Rugby in Craven as of 2021 are:

Table 31: TGR Rates

Sport and Age Groups	Number of teams in age group within the area	Current population in age group within the area (2021)	Future population in age group within the area (2032)	Current TGR	Population Change in Age Group	Potential Change in Team Numbers in Age Group
Rugby Union Senior Men (19-45yrs) includes Colts	10	6,930	6,985	693.00	55	0.08
Rugby Union Senior Women (19-45yrs)	3	7,015	7,033	2338.33	18	0.01
Rugby Union Youth Boys (13-18yrs)	10	1,999	1,942	199.90	-57	-0.29
Rugby Union Youth Girls (13-18yrs)	3	1,691	1,709	563.67	18	0.03
Rugby Union Mini/Midi Mixed (7-12yrs)	22	3,603	3,208	163.77	-395	-2.41
Current TGR is the number of people required to generate one team e.g. 693 male adults aged 19-45 years is needed to generate one team in 2021. With the change in population by 2032 the number of teams in the age group will increase by 0.08.						

- 6.16 The future demand through to 2032 is likely to be from potential slight increase in senior men's and women's rugby and youth girls rugby. Decreases are projected for youth boys and mini/midi rugby, however the RFU consider this to be unlikely.

Supply and Demand Balance

- 6.17 Given the updated information on supply and demand and the light touch approach to the PPS refresh it is reasonable to conclude that there remains insufficient supply of community secured rugby pitches to meet current and future changes in demand for pitches. There are rugby pitches at education sites but without community use agreements in place the access to pitches remains unsecured.
- 6.18 The 2016 PPS identified an under supply of pitches with a series of actions to improve supply. The progress against those actions such as drainage works at North Ribblesdale's Grove Park site and the additional partnership work with the Giggleswick Parish Council at the Harrison Road Pitches and Skipton Rugby Clubs pitch improvements at Sandylands have been completed enabling better pitch carrying capacity.
- 6.19 The proposed World Rugby 22 AGP at Giggleswick School will no longer be developed but the proposed development of two senior grass pitches at the school which will be available for community use will replace the 2016 proposed AGP. A planning application has not been submitted to date, as part of any planning application securing a community use agreement would need be linked to the pitch development to increase the supply of community secured pitches.
- 6.20 In Wharfedale the need is to improve the quality of playing pitches and ancillary facilities within the area for example at Upper Wharfedale School and Wharfedale Rugby Club will increase the playing capacity and enable more community use. Bringing back into use the rugby pitch at the Gardener Trust site adjacent to Upper Wharfedale Cricket Club will similarly increase playing capacity.
- 6.21 There is no World Rugby 22 compliant AGP pitch within the district. Teams travel outside of the district to Keighley to use a World Rugby 22 AGP for training, this pitch is more accessible to clubs in the south of the district. The assessment of supply and demand for football concludes that there is a deficit of one full-size 3G AGP in the central and north areas of the district. A 3G AGP that is World Rugby 22 compliant would be beneficial to participation, in particular the Grassington/Threshfield area and support multi-sport participation.
- 6.22 Rugby pitches in the district need to be protected. It is important to ensure that where the quality of pitches is good this is at least maintained and where required the quality of pitches improved and enhanced. Securing community access to the proposed pitch developments at Giggleswick School will in part address under supply.

Key Findings for Rugby

- 6.23 The supply and demand results indicate that overall that there is insufficient supply across the district of rugby pitches. Supply will increase with a community use agreement attached to the proposed two pitches at Giggleswick School and, provide additional capacity during community use times in the main for North Ribblesdale Rugby Club.

- 6.24 Changing accommodation and toilet provision limits the growth of rugby and the ability to provide changing for both male and females at Wharfedale Rugby Club and North Ribblesdale Rugby Clubs. This presents challenges for ensuring good practice is met for safeguarding. Disability access is difficult.
- 6.25 Wharfedale Rugby Club has an apprenticeship programme which requires more suitable and dedicated space to support the educational elements. Catering facilities are not fit for purpose to meet the current demand and therefore any subsequent increased future demand as rugby and potentially other sports grow.
- 6.26 Further pitch and floodlighting improvements at Skipton Rugby Club would be of benefit. Replacement of the pitch perimeter fencing is a priority and in the future the stand will need works.
- 6.27 In Wharfedale poor drainage and accessibility issues to the pitch adjacent to the rugby club limits the use of that pitch for weekend junior rugby. The rugby pitch at the Gardener Trust site is currently not used, although some distance from the main club there is the potential to bring the pitch back into use with pitch improvement work. Upper Wharfedale School current pitch quality impacts on its use and availability for club rugby both for education and community use.
- 6.28 There is no World Rugby 22 compliant AGP pitch within the district. Teams travel outside of the district to Keighley to use a World Rugby 22 AGP for training, this pitch is more accessible to clubs in the south of the district. Potential AGP development needs to be considered in conjunction with findings from other sports within the PPS Refresh 2021.
- 6.29 The rugby clubs have invested financially and in volunteer time to make improvements to the quality of the pitches and ancillary facilities. Feedback from clubs and indicates that there is a continued commitment towards enhancing the provision available. The RFU Groundsmen Connected tools and resources offer support and advice to clubs on the maintenance of turf pitches.

Recommended Action Plan

- 6.30 The recommended action plan includes existing actions from 2016 which remain relevant and appropriate and new actions based on the information and issues which have emerged during the PPS Refresh study. The format of the action plan follows on from the 2016 PPS.
- 6.31 It should be noted that the actions in relation to clubs based in the area known as Sandylands, are linked to the football and cricket and AGP action plans. Similarly, this applies to the development and improvement of sports pitches in Grassington/Threshfield, Wharfedale.

Table 32 : PPS Refresh 2021 Rugby Action Plan

Site	Action ID	Issue/Opportunity to be addressed Key Actions	Specific Actions	Lead (Bold) and Partners	Resource Implications	Timescales and Priorities Short 1-3 years Medium 3-5 years Long 6-10 years
Giggleswick School (Main Site) Giggleswick School (Lords Playing Field)	Rug-1 Updated	School is currently looking to develop a full size World Rugby 22 3G pitch, which would have a formal community use agreement for peak hours. Recommended Revised Action: There continues to be a need for additional high quality rugby pitches for education and community use. This can be provided by the schools proposal to make improvements to the pitches at Lords Playing Field and the building of new changing facilities.	School to finalise proposals and submit planning application. Community Use Agreement (CUA) be negotiated to ensure access to sports pitches and changing facilities. Continued partnership development with North Ribblesdale Rugby Club to support the growth and development of rugby	Giggleswick School CDC Officer time North Ribblesdale Rugby Club RFU	Funding for development identified through sale of land as identified within local plan. CDC Officer time to negotiate CUA	Short High Priority
Grove Park - North Ribblesdale Rugby Club	Rug -2 Updated	Pitch improvements are completed. Recommended Revised Action: Rug 2a - Continued development of the club requires access to additional	Continued partnership development with Giggleswick School to secure through CUS access to the new pitches and changing facilities at Lords	North Ribblesdale Rugby Club Giggleswick School	Volunteer time CDC Officer time to negotiate CUA	Rug - 2a Short High Priority Rug- 2b

		<p>pitches particularly for junior development.</p> <p>Rug 2- b Additional changing and improved facilities are required to accommodate the number of teams.</p>	<p>Playing Field once developed.</p> <p>Continue to work with Giggleswick Parish Council for the continued provision of pitches at Harrison Playing Fields</p> <p>Undertake feasibility for the development of the existing changing accommodation. Identify funding.</p> <p>CDC to assign developer contributions where applicable in line with Local Plan policies</p>	<p>Giggleswick Parish Council</p> <p>CDC Officer time</p>		<p>Medium</p> <p>Medium Priority</p>
Harrison Playing Field - Giggleswick	<p>Rug – 5</p> <p>New</p>	<p>Playing pitch would be better protected by a change to the public right of way (PROW) which is directly through the middle of the area.</p> <p>Opportunity for partnership work with proposed Lords Playing development at Giggleswick School to enable users of Harrison Playing Fields to be able to access the changing facilities.</p>	<p>To investigate how the PROW can be amended with the relevant planning officers.</p> <p>Continue to work in partnership with North Ribblesdale Rugby Club to maintain the pitches.</p> <p>Develop a relationship with Giggleswick School regarding access to the proposed</p>	<p>Parish Councillors</p> <p>CDC</p> <p>North Ribblesdale Rugby Club</p> <p>Giggleswick School</p>	<p>Parish Councillor time</p> <p>Clerk to Parish Council time</p> <p>CDC Officer time to negotiate CUA</p>	<p>Short</p> <p>High Priority</p>

			changing rooms. To be part of any CUA negotiations.			
Sandylands Grass Pitches	Rug- 3 Updated	Cricket pitch has been moved Action regarding pitch improvements remain to improve the overall quality and drainage on the Sandylands pitches. In conjunction with overall pitch improvements linked to Football action plan	Work with NYCC to improve the quality of the pitches and any relevant National governing Bodies	RFU NYCC	Officer time to manage the projects	Medium Medium Priority
Skipton Rugby Club	Rug – 4 Updated	Pitch improvements taken place and club house access improved. Recommended Revised Action: Replacement of the pitch perimeter fencing. Upgrade floodlighting to enable more flexible training opportunities.	Club to develop full plans and costs. Identify funding opportunities and submit bids. Engage in the wider Sandylands masterplan discussions. CDC to assign developer contributions where applicable in line with Local Plan policies	Skipton Rugby Club RFU CDC	Volunteer time RFU Officer time CDC Officer	Fencing Short High Priority Floodlighting Medium Medium Priority
The G.F. Gardener Trust Memorial Ground - Grassington	Rug – 6 New	Pitch drainage improvements. Any development of the pitch at Wharfedale should be linked into the wider consideration for multisport club in Grassington.	Engage in the discussions on the development of a multisport hub	Wharfedale Rugby Club RFU	Volunteer time RFU Officer time CDC Officer time YDNPA Officer time	Short High Priority

		Links to actions Foot- 17, 18		CDC - sports development support YDNPA – planning support		
Wharfedale School - Grassington	Rug – 7 Same as New	There is one pitch of poor quality which is used by the Grassington Sports Clubs to supplement other pitches. Pitch has very limited winter use due to drainage issues. Any development of the pitch at Wharfedale should be linked into the wider consideration for multisport club in Grassington. Links to actions Foot- 17, 18	Engage in the discussions on the development of a multisport hub. Actively be part of a detailed feasibility as outlined in Foot -17.	Wharfedale School CDC - sports development support YDNPA – planning support	Senior School Management time Communihire Ltd time	Short High Priority
Wharfedale Rugby Union Football Club	Rug- 8 New	The current pitches are in good condition and drainage works have been undertaken. The club accesses Wharfedale School see above as require additional pitches to cater for the number of teams although the school pitches are poor. Winter training is affected by the need to protect pitches and therefore needs to be additional good quality training pitches and/or artificial surface. Players travel to Keighley to access AGP in the winter. Changing accommodation does not meet the needs of the club. No facilities for female changing both for players and match officials.	Engage in the discussions on the development of a multisport hub. Actively be part of a detailed feasibility as outlined in Foot -17.	Wharfedale Rugby Club RFU CDC - sports development support YDNPA – planning support	Volunteer time RFU Officer time CDC Officer time YDNPA Officer time	Short High Priority

		Links to actions Foot- 17, 18				
All Clubs	Rug – 9 New	PPS 2016 identified the action to develop and fund an equipment bank for maintenance machinery and benefit from additional maintenance training. Not been achieved or progressed. Rugby Clubs should register with the RFU's Rugby Groundsmen Connected where they will be able to access information and advice. Register via groundsmenconnected@rfu.com .	Clubs to register with RFU	Rugby Union Clubs	Volunteer time	Short High Priority

Rugby League

- 6.32 As in 2016 there are no Rugby League Clubs or pitches in the district, this was confirmed through consultation with the Rugby Football League.

7. Hockey

Hockey

- 7.1 England Hockey have five ambitions; International Success, Increased Visibility, Growth in Participation, Develop Hockey Infrastructure, Be Proud and Respected Custodian of Hockey. These ambitions are driven by a series of objective, the key ones relating to grass roots club hockey being:

Our ambition is to double the number of hockey players from 140,000 to 280,000. To achieve this, we will:

- Support our clubs to grow participation year on year
- Encourage a wide participation base of hockey in schools

Our ambition is to ensure our infrastructure is fit for the purpose of driving our objectives. To achieve this we will:

- Introduce and develop a programme to empower a cohort of clubs to develop a model that could support a domestic product that provides frequent player contact, financial viability, and scalability
- Regularly review strategies for coaching, officials, and clubs to ensure they are fit for purpose
- Implement the facilities strategy to secure better long-term arrangements for clubs

Consultation

- 7.2 Consultation with England Hockey (EH) has indicated that Craven does not have any competitive hockey clubs playing within the district.. The district does, however, provide opportunities for recreational participation for hockey through Settle Hockey Club. No response was received from Settle Hockey Club. Skipton Women's Hockey Club play outside of the district and train and play at Ben Rhydding Sports Club, Ilkley no response was received via the consultation.

Supply

- 7.3 Giggleswick School has the only floodlit full size AGP suitable for hockey i.e. full sized sand dressed AGP. South Craven School have a floodlit AGP surface area which is suitable for junior training. The Giggleswick pitch is in good condition as it was resurfaced in 2016. Both pitches are accessible out of education hours for community use.

However, it is noted that the Giggleswick School pitch is available for community use 8.00am - 1.00pm on Saturdays with school fixtures taking place in the afternoons and Sundays 9.00am – 2.00pm, this contributes to competitive hockey being displaced to outside of the district.

Demand

- 7.4 Skipton Hockey Club Women's team play in the Moor and Dales Division 1. Settle Hockey Club is a recreational and social club. The TGR rates were considered but do not provide valid data due to the number of teams in the district.

Supply and Demand Balance

- 7.5 In 2016 there was a small positive balance of capacity at Giggleswick School for the sand based AGP even when considering its use by other sports during the community accessible times. Skipton Women's Hockey Club are training approximately 10 miles from Skipton which is nearer than travelling to Giggleswick which is approximately 16 miles.
- 7.6 In 2016 the Facilities Planning Model (FPM) for Craven suggested the population at that time created a demand for 0.3 pitches, given by 2032 the population is projected to reduce it suggests that should an FPM report be produced in 2021 this figure would reduce. The 2016 PPS considered the proposed 3G pitch development at Giggleswick School and that would result in displacing some users from the sand dressed pitch and there would be additional capacity for hockey. Although the 3G pitch development is no longer going to take place there is no significant demand for hockey and there continues to be capacity at the Giggleswick pitch. There is no additional evidence to support the further development of a full size AGP suitable for hockey.

Key Findings for Hockey

- 7.7 The information above illustrates that that there is no significant unmet demand for hockey and that there is sufficient supply of suitable AGP.

8. Key Findings Overall

8.1 Progress has been made on several actions identified in the 2016 PPS most significantly;

- The development of the Malsis School site which has enabled Sutton Junior Football Club to continue to grow and develop.
- Planning permission has been granted for the development of a multisport club house at Skipton Cricket in a partnership between the cricket club and Skipton Town Juniors.
- Settle Utd FC have equally secured planning permission for a new club house and changing facilities. The securing of funding to deliver the projects is a priority for these clubs.
- Embsay Junior FC are working with the landowner/developer and have submitted a planning application (2020/21348/FUL) to develop the playing pitches on land off Shires Lane Embsay, which will provide the club with a base.
- Floodlighting has been installed at South Craven School to increase the capacity for community access to the 3G AGP.
- Sutton in Craven Cricket Club have added a second square and have a new pavilion.
- Skipton CIC have secured a long term lease and been able to move the wicket and make improvements to the pitch.
- North Ribblesdale Rugby Club have undertaken a major project to improve the quality of the second pitch. The club have established a partnership with the Parish Council to maintain the playing fields at Harrison Road to accommodate growing junior rugby.
- In education settings NYCC have undertaken some improvements at the Sandylands pitches, although there are still quality issues with the pitches and Settle College have introduced a better off season pitch maintenance programme.
- The Burton in Lonsdale Parish Council have addressed drainage issues with further works planned and an improved maintenance programme, the pitch is now the regular home venue for a junior football team.
- There are number of football, cricket and rugby clubs and Parish Councils who have invested financially and in volunteer time to make improvements to the quality of the pitches and ancillary facilities. Feedback from clubs and Parish Councils indicates that there is a continued commitment towards enhancing the provision available.

- 8.2 There are several sports clubs based at the Sandylands location. There is mixed land ownership and several operators managing the different facilities and clubs. This adds a layer of complexity to the master planning approach identified in the 2016 PPS. Progress on improving provision across the Sandylands location has been made since 2016, including the points above which reference Skipton Cricket Club, Skipton CICC, Skipton Juniors FC and NYCC. Additionally, Skipton Rugby Club have re-laid a pitch and made improvements to the club house. The Sandylands Sports Complex resurfaced the 3G AGP which meets FIFA approved standards and have made improvements to the floodlighting. More recently, Craven District Council have facilitated the clubs and operators to work more closely together to look at commissioning a master planning exercise to identify areas for joint work, investment, and priorities in the future.
- 8.3 The LMS site within the Sandylands location has a strategic fit with the location. The pitch is used on occasions by Skipton Juniors FC during winter evenings and when the Sandylands NYCC pitches are not playable. There is the potential to enhance the provision to provide a pitch to fit with the development of the new club house and changing rooms identified above, with the pitch being used by Skipton Town Juniors and potentially Skipton Town should additional women's teams be developed. Development of the LMS pitch will be governed by the current owner and exploring the feasibility of investment and long term leases.
- 8.4 In the 2016 PPS Giggleswick School was planning to develop a rugby compliant AGP, this action has now been superseded with the schools proposal to develop the Lords Playing Field creating two high quality full size rugby grass pitches and significant improvements to the cricket outfield. The proposal includes the replacement of the existing changing facilities with a fit for purpose changing facility with social/community space. The pitches and facilities will be community accessible. It is anticipated that the school will submit a planning application before the end of 2021.
- 8.5 The projected population change and identified housing development through to 2032, identified in the Craven Local Plan, will not impact on the future demand for pitches and supports that supply is sufficient. The TGR rates overall indicate there will be little change in the number of teams by 2032. However, the impact on Covid 19 and post pandemic participation levels are yet to be experienced. The NGB for sport have strategic plans which focus on growing their sports and in particular women and girls participation, the NGB's do not expect there to be a decrease in the demand for pitches.
- 8.6 There is no evidence to support that there is a surplus of pitches. Any building development proposal in the future which may come forward would need to be considered in line with the National Policy Planning Framework and within the adopted Craven Local Plan Policy INF3 and the YDNPA Local Plan, which clearly identifies that open space, sports and recreational buildings and land, including playing fields should not be built on unless strict criteria are met.
- 8.7 The key supply and demand balance for Football, Cricket, Rugby Union grass pitches are summarised as:

Table 33: Supply and Demand Summary

Football	<p>There is sufficient supply of pitches to meet current and future changes in demand for pitches. Therefore, pitches need to be protected and improved to ensure good quality provision.</p> <p>There are sites such as Hellifield and Bentham where there is currently no football team. The rural nature and locality of such sites means that they are important as a community recreational amenity space as well as a playing field and can be used for other activities and sports and not just football. The LMS site is underutilised but is an important within the overall Sandylands location.</p> <p>It is important to ensure that where the quality of pitches is good this is at least maintained and where required the quality of pitches improved and enhanced. There is no need to provide additional pitches beyond this development. The pitch development at Embsay was previously identified in the 2016 PPS and is still required and remains a valid recommended action</p>
Cricket	<p>The supply and demand results indicate that overall that there is sufficient capacity across the district of cricket pitches. Changing accommodation limits the growth of cricket through the ability to provide changing for both male and females at Upper Wharfedale, Settle and Ingleton Cricket Clubs. The development of the new build pavilion at Skipton Cricket Club will provide suitable changing for male and female players.</p> <p>Giggleswick Schools proposed pitch and changing room developments at the Lords Playing Field site will enhance the provision for both education and community use. A planning application has not been submitted to date, as part of any planning application securing a community use agreement would need be linked to the pitch and changing facility development to increase the supply of community secured pitches. The school pitches are used by Settle Cricket Club without which the club would struggle to accommodate all teams.</p> <p>Little progress has been made on a collaborative pitch maintenance programme for the district. The geography of the district to a certain extent makes this more restrictive. However, in locations such as Sandylands where there are several sports clubs this would be more realistic. Clubs can seek support through the ECB partnership with Grounds Management Association where resources are available which act as reference point for cricket club volunteers to find practical; guidance on maintaining and developing their ground.</p>
Rugby	<p>The supply and demand results indicate that overall that there is insufficient supply across the district of rugby pitches. Supply will increase with a community use agreement attached to the proposed two pitches at Giggleswick School and, provide additional capacity during community use times in the main for North Ribblesdale Rugby Club.</p>

	<p>Changing accommodation and toilet provision limits the growth of rugby and the ability to provide changing for both male and females at Wharfedale Rugby Club and North Ribblesdale Rugby Clubs. This presents challenges for ensuring good practice is met for safeguarding. Disability access is difficult.</p> <p>Further pitch and floodlighting improvements at Skipton Rugby Club would be of benefit. Replacement of the pitch perimeter fencing is a priority and in the future the stand will need works.</p> <p>In Wharfedale poor drainage and accessibility issues to the pitch adjacent to the rugby club limits the use of that pitch for weekend junior rugby. The rugby pitch at the Gardener Trust site is currently not used, although some distance from the main club there is the potential to bring the pitch back into use with pitch improvement work. Upper Wharfedale School current pitch quality impacts on its use and availability for club rugby both for education and community use.</p> <p>There is no World Rugby 22 compliant AGP pitch within the district. Teams travel outside of the district to Keighley to use a World Rugby 22 AGP for training, this pitch is more accessible to clubs in the south of the district. Potential AGP development needs to be considered in conjunction with findings from other sports within the PPS Refresh 2021</p>
--	---

- 8.8 Using the FA indicative supply and demand model as set out in the 2016 PPS it is estimated that one full size AGP can service 38 teams. On that basis and that we estimate there are 110 teams in Craven in 2021, there is a recommended need for 2.9 rounded up to 3 full size 3G pitches, to be used at peak times. An increase of 1 full size 3G AGP from the 2016 PPS.
- 8.9 Since 2016, the Ingleton 3G small sided 5 v 5 side pitch operated and owned by Ingleton Rural Community Association brings the number of 3G pitches to 2.25, a shortfall of 0.75 of the 2021 recommended need of 3 full size 3G AGP. The Ingleton 3G AGP provides access to a 3G AGP facility in the mid- north area of the district. The Football Foundation Local Football Facility Plan (LFFP) had recommended this pitch being upgraded to a 3G as a priority project, which has been achieved.
- 8.10 The mid/north area has an accessible small sided 3G AGP in Ingleton, a 5 a side sand based AGP in Burton in Lonsdale and a full sized sand dressed AGP at Giggleswick School.
- 8.11 The 2021 refresh concurs with the 2016 PPS that there remains a deficit in the central and northern areas of the district and as stated in the 2016 PPS any supply for any additional 3G AGP (small-sided or full size utilised by other sports i.e. Rugby) should be focussed in the central and northern parts of the district. Further confirmation on location is found in the LFFP 2018 which highlighted the rural nature of the district which has an impact on access and travel times to 3G pitches and with an uneven distribution of pitches to the south of the district and that small sided 3G pitches were needed in the central and northern parts of the district.

- 8.12 There are additional sand based AGP in the district with a small sided pitches at Burton in Lonsdale and South Craven School. Giggleswick School has a full sized AGP with secured community access. In 2016 there was a small positive balance of capacity at Giggleswick School for the sand based AGP, which is the only full sized pitch suitable for hockey, even when considering its use by other sports during the community accessible times. There is no additional evidence in 2021 to support the development of a full size AGP suitable for hockey.
- 8.13 The PPS refresh includes the area of the district which lies within the YDNPA. The consultation work has identified that in the Grassington and Threshfield area;
- There are good quality pitches at Wharfedale Rugby and Upper Wharfedale Cricket Clubs but both clubs lack appropriately sized changing facilities and toilet provision to meet the needs of both male and female players and officials. This presents challenges for ensuring good practice is met for safeguarding. Disability access is difficult. Car Parking is a challenge for both clubs.
 - The rugby club has an apprenticeship programme which requires more suitable and dedicated space to support the educational elements. Catering facilities at the club are not fit for purpose to meet the current demand and therefore any increased future demand as rugby and potentially other sports grow.
 - The Grassington Football Club pitch has seen investment in drainage but continues to have problems during the winter. Having only one pitch which is used by both adult and junior teams has an impact on the ability to grow participation in football. Investment has been made in improving the changing facilities.
 - Upper Wharfedale School grass pitch is of poor quality and is unable to be used by the Grassington Football and Wharfedale Rugby Clubs to supplement their need, given the poor quality and the need to protect the use for school PE. Overall there is limited use of the pitch during the winter months.
 - The rugby pitch adjacent to the cricket pitch is used at the weekends, there are no floodlights and the pitch has poor drainage. The pitch is isolated from the main rugby club site; as the crowd is only a short distance from the rugby club but is not accessible as there is no crossing over the River Wharfe and is therefore around a 3 mile journey by road from the main club. All these factors contribute to the pitch being underutilised.
 - The lack of an AGP coupled with the grass pitch quality issues limits the growth in the local sports clubs and the ability of the education sector to offer a good quality PE experience. An AGP in Grassington/Threshfield would enable more participation in sport by more people. A suitable site which maximises access via car, cycling, walking and public transport and accessible for community sports club and educational use needs to be identified.
 - The Sport England Active Power Places database shows the nearest AGP are the 3G pitches in Skipton approximately 15 - 20 minutes (10 miles) journey time. The football teams make limited use of the pitches in Skipton due to affordability and

accessibility. There is a rugby compliant 3G pitch at Keighley which is a 40-45 minute journey time (20 miles) which the rugby club use on occasions the limiting factor being journey time and the sand based AGP at Giggleswick School which is not used by any the clubs as this is 45-50 minutes (18 miles) journey time. Given the rurality of the area and the road infrastructure accessibility to AGP is a key challenge.

- Wharfedale Rugby Club, Grassington Football Club and Upper Wharfedale Cricket Clubs and Upper Wharfedale School have recognised that to address their individual challenges that a collective and collaborative approach to enhancing provision in the area is the way forward.

- 8.14 Little progress has been made on a collaborative pitch maintenance programme for the district identified as an action in the 2016 PPS. The geography of the district to a certain extent makes this more restrictive. Since 2016 NGB's have developed different approaches to supporting clubs with pitch maintenance, signposting clubs to NGB resources is the favoured approach in 2021.

9. Recommendations

- 9.1 The emphasis should remain as in the 2016 PPS on improving quality rather than quantity of provision given there is sufficient provision for the current and future levels of football and cricket. There are proposed developments in hand which if successful will help address the deficiencies for rugby.
- 9.2 There is a shortage of one full size 3G pitches but it is recommended that consideration is given to AGP provision at Grassington/Threshfield in Wharfedale given the lack of proximity to existing provision and to offset and address some of the pitch quality issues for both community and education use.
- 9.3 The action plans above identified for each sport are the recommended way forward to enhance provision in the district. Planning gain may present opportunities to support the taking forward of the action plans.
- 9.4 The multisport approach at Sandylands and at Grassington/Threshfield in Wharfedale present significant opportunities to maximise the benefits of partnership and collaborative working by sports clubs, public sector, national governing bodies and funders.
- 9.5 The continued commitment by all PPS stakeholders to ensure that there is a network of high quality accessible facilities will contribute overall to healthier lifestyles across all age groups and enable greater opportunities for people to be physically active and participate in sport.

Recommended Planning Considerations

- 9.6 In previous years there has been planning applications for residential developments next to cricket grounds where there has been a risk of ball strike and this could constitute a nuisance under the Environmental Health legislation if there was damage or injury to people and property, and this could prejudice the use of the playing field. In cases where there are planning applications adjacent to a playing field that is at risk of ball strike, the applicant will be expected to undertake a ball strike risk assessment produced by a suitably qualified person and the applicant will be expected to provide and maintain any ball stop mitigation that is identified in the risk assessment.

“Disclaimer: If any playing field sites, sport facilities, and/or pitches are not contained within this Playing Pitch Strategy, this is due to an accidental omission, and does not in any way mean that they can be redeveloped. Planning applications to develop any omitted sites will still need to be considered against Paragraph 99 of the NPPF.”