

To:- Planning Department  
Craven District Council  
1, Belle Vue Square  
Skipton

Application for Planning Consent.

Neighbourhood Plan Area

by

**Bradleys Both Parish Council**

# **Bradleys Both Parish Council**

## **Planning Application**

The following application is for the designation of a Neighbourhood Plan Area for the Parish Council of Bradleys Both, pursuant to the Town and Country Planning Act 1990 as amended by the Localism Act 2011.

### **1.0 Introduction**

1.1 Bradleys Both Parish Council forms the relevant body for (the purposes of section 61G(2),) of the Town and Country Planning Act 1990 as amended by the Localism Act 2011.

1.2 This application is in respect of the whole of the area designated as the Parish of Bradleys Both as shown enclosed on the attached map and outlined in red .

1.3 The area to be designated does not overlap any other Neighbourhood Area Plan or Parish Areas.

### **2.0 Parish Council Working Party**

2.1 The Parish Council set up a Working Party in 2012 to consider the implications of the Localism Act 2011 and the development of a Neighbourhood Plan.

2.2 The Working Party was comprised of Members of the Parish Council

2.3 Regular monthly meeting of the Working Party have been held during the year 2012 and up to the present time.

2.4 The Working Party has had the advantage of being able to obtain the advice of Officers and local Representatives of Craven District Council, the local North Yorkshire County Councillor and of Planning Aid England

### 3.0 Provisional View of the Working Party

3.1 The natural development of the Parish with the divisions between the Residential Area the Commercial and Business areas and the surrounding Farming areas presents an ideal structure on which it is possible to develop a Neighbourhood Plan.

3.2 This fortuitous development permits each area to have its own focus yet encourage change where needed . The working Party are of the opinion that through the medium of a Neighbourhood Plan sustainable development can be made across the whole of the Parish yet allowing the Community to derive the benefits that the Parish has to offer.

3.3 A significant degree of integration exists across all the elements that go to make up the Parish of Bradley at Social, Commercial and Economic levels.

### 4.0 Testing Public Opinion.

4.1 The members of the Working Party were agreed that a case had been made out to make it worthwhile to take forward the concept of a Neighbourhood Plan.

4.2 Before any action could be taken to embark on a Plan it was essential to test the reaction of the Community to the idea and to canvass their views and obtain their responses.

4.3 The Community View was tested by means of every household being given a leaflet setting out the principles behind the concept of the Neighbourhood Plan. Also contained was the information of an Open Public Meeting to be held on the 7<sup>th</sup> April 2012 in the Village Hall.

### 5.0 Open Public Meeting.

5.1 The meeting had Three aims :

5.2 Firstly to expand on the information set out in the leaflet. This was undertaken by a representative of Planning Aid England

5.3 To record ideas on local matters and priorities that a neighbourhood plan may be able to address.

5.4 To question Parish Councillors, Craven District and County Councillors, Officers from the Planning Department of Craven District Council and the Planning Aid England Representative about the concept of Neighbourhood Plans.

#### 6.0 Outcome of Public Meeting.

6.1 A successful meeting was held in the Village Hall which was very well attended by the residents of the Parish

6.2 Many useful suggestions were put forward by members of the Parish who attended the meeting.

6.3 Following the meeting the Working Party was approached by some members of the public who expressed a willingness to take an active part in the Plans preparation. These approaches were greatly welcomed and they are now co-opted members of the Working Party.

#### 7.0 Conclusion.

7.1 From the significant support of the public who attended the Open Meeting and the general interest of the members of the Community, the Parish Council of Bradleys Both are confident that the concept of producing a Neighbourhood Plan is an issue worth pursuing and to this end seeks the consent of Craven District Council to establish a Neighbourhood Plan Area

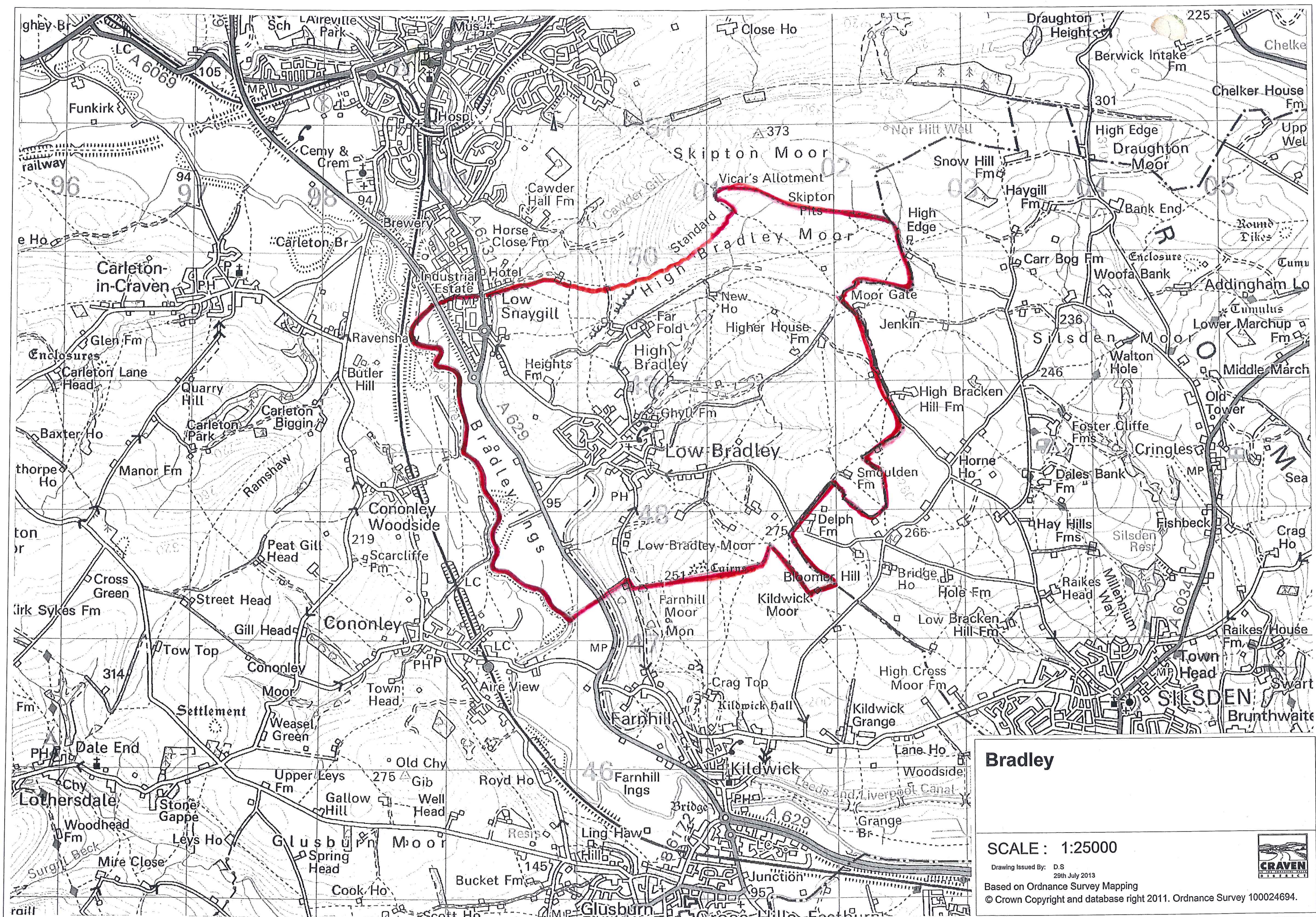
Application made on behalf of Bradleys Both Parish Council.



M.H. Tomkins  
Clerk to the Council.  
13 Banklands Drive  
Silsden

Date.....19/8/13.....





# Bradley

SCALE : 1:25000

Drawing Issued By: D.S.  
29th July 2013  
Based on Ordnance Survey Mapping  
© Crown Copyright and database right 2011. Ordnance Survey 100024694.

