

INSET MAPS 1—1a

SKIPTON (1:17000)

CRAVEN DISTRICT LOCAL PLAN

(Outside the Yorkshire Dales National Park)

Pre-Publication Draft June 2017

Based on Ordnance Survey Mapping

© Crown Copyright and database right 2017

Ordnance Survey 100024694

Base map date: 13th January 2017



Inset Maps should be read in conjunction with the Written Statement

Key Notation and Relevant Policies

Landscape

- Yorkshire Dales National Park ENV1, ENV9
- Area of Outstanding Natural Beauty ENV1, ENV9
- Green Wedge ENV13

Nature Conservation

- Special Protection Areas (SPA) and Special Areas of Conservation (SAC) ENV4
- Site of Special Scientific Interest (SSSI) ENV4
- (SINC) ENV4
- Ancient Woodland ENV4

Towns and Villages

- Open Space, Sport and Recreation Facilities INF3
- Proposed Local Green Space Designation ENV10
- Conservation Area SD1, SP1, SP2, SP3, SP4, SP5, SP6, SP7, SP8, SP9, SP10, SP11, ENV2, ENV3, ENV9, ENV11
- Rural Designated Area H2

Housing and Employment

- Draft Housing Allocation SD1, SP1, SP3, SP4, SP5, SP6, SP7, SP8, SP9, SP10, SP11, ENV2, ENV3, ENV4, ENV5, ENV6, ENV7, ENV8, ENV9, ENV10, ENV11, ENV12, H2, H4, INF1, INF3, INF4, INF6
- Green Infrastructure Provision on Draft Housing Allocation SD1, SP1, SP3, SP4, SP5, SP6, SP7, SP8, SP9, SP10, SP11, ENV5
- Existing Housing Commitment SP1
- Recently built developments not showing on map base
- Draft Mixed Use Employment-led Allocation SD1, SP1, SP2, SP3, SP4, SP5, SP6, SP7, SP8, SP9, SP10, SP11, EC1, ENV2, ENV3, ENV4, ENV5, ENV6, ENV7, ENV8, ENV9, ENV11, ENV12, H2, H4, INF1, INF3, INF4
- Existing Mixed Use Commitment (Housing, Employment, Open Space) SP1, SP2, EC2, INF3
- Draft Employment Allocation SD1, SP2, SP4, SP5, SP6, SP7, SP8, SP9, SP10, SP11, ENV2, ENV3, ENV4, ENV5, ENV6, ENV7, ENV8, ENV9, ENV11, ENV12, EC1, INF1, INF3, INF4
- Existing Employment Area SP2, EC2
- Mixed Use Opportunity Sites / Regeneration Area SP5, SP6, EC5
- Primary Shopping Area for Skipton EC5, EC5a
- Town Centre for Skipton and Settle EC5, EC5a

Tourism

- Tourism Development Commitment EC4
- Core Visitor Area (Tourism-Led, Mixed-Use Development Opportunity Site at Bolton Abbey) EC4a
- General locations for development within the Core Visitor Area at Bolton Abbey EC4a

Educational Provision

- Primary School Provision in Skipton Policy INF6

Safeguard Land and Transport

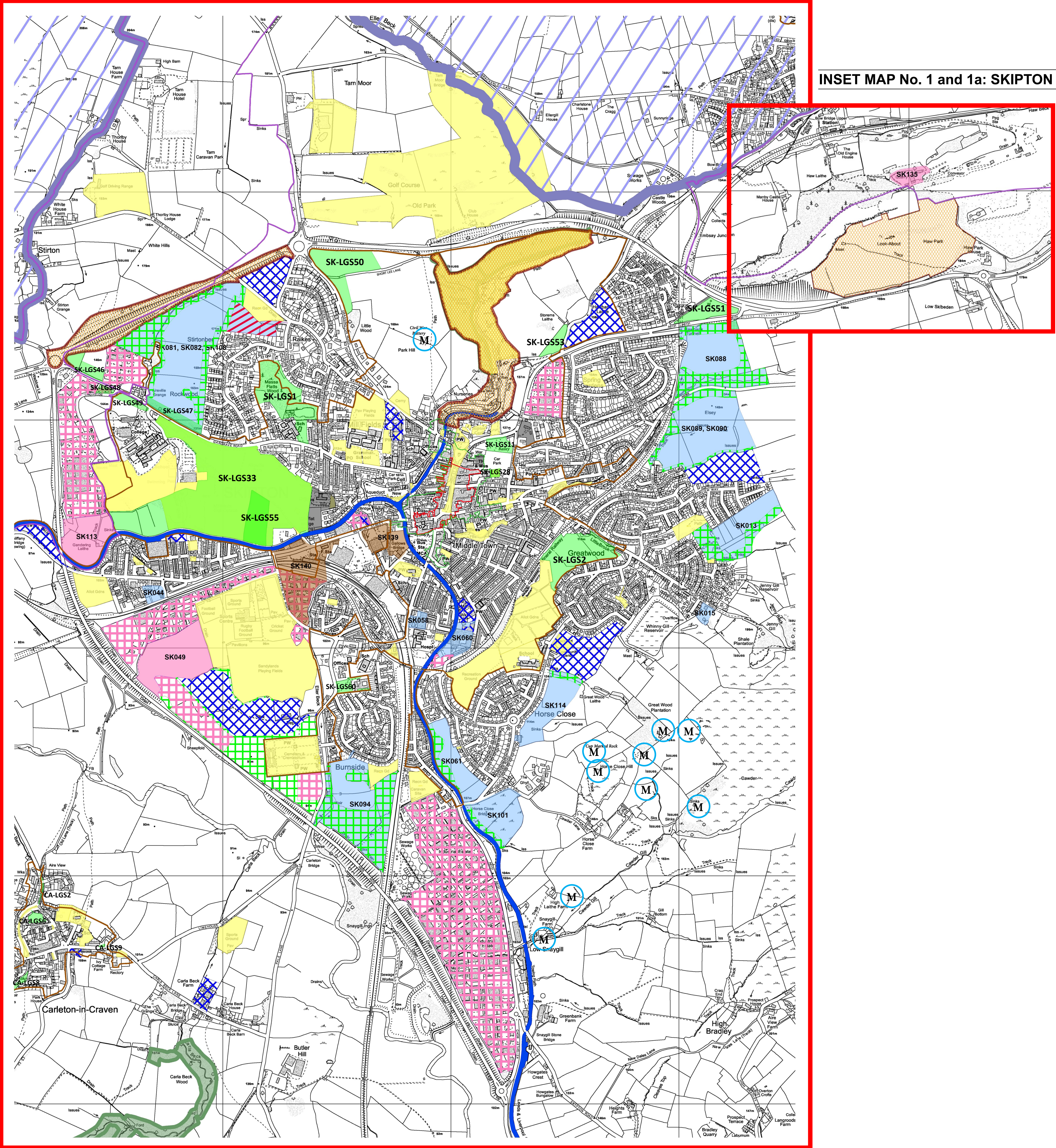
- Leeds – Liverpool Canal Corridor ENV2, ENV11
- Protection of Railway Trackbeds and Infrastructure SP2

- Scheduled Ancient Monument SD1, SP1, SP2, SP3, SP4, SP5, SP6, SP7, SP8, SP9, SP10, SP11, ENV1, ENV2, H1, H2, H3, EC1, EC3, EC4, EC4a, EC5, EC5a
- Parks and Gardens of Special Interest ENV1, ENV2

Other

- Plan Area Boundary
- Inset Map Area

INSET MAP No. 1 and 1a: SKIPTON (1:17000)



INSET MAP 3

GLUSBURN, CROSS HILLS, SUTTON IN CRAVEN
CRAVEN DISTRICT LOCAL PLAN
(Outside the Yorkshire Dales National Park)
Pre-Publication Draft June 2017

Based on Ordnance Survey Mapping
© Crown Copyright and database right 20117
Ordnance Survey 100024694
Base map date: 13th January 2017



Inset Maps should be read in conjunction with the Written Statement

Key Notation and Relevant Policies

Landscape

- Yorkshire Dales National Park ENV1, ENV9
- Area of Outstanding Natural Beauty ENV1, ENV9
- Green Wedge ENV13

Nature Conservation

- Special Protection Areas (SPA) and Special Areas of Conservation (SAC) ENV4
- Site of Special Scientific Interest (SSSI) ENV4
- (SINC) ENV4
- Ancient Woodland ENV4

Towns and Villages

- Open Space, Sport and Recreation Facilities INF3
- Proposed Local Green Space Designation ENV10
- Conservation Area SD1, SP1, SP2, SP3, SP4, SP5, SP6, SP7, SP8, SP9, SP10, SP11, ENV2, ENV3, ENV9, ENV11
- Rural Designated Area H2

Housing and Employment

- Draft Housing Allocation SD1, SP1, SP3, SP4, SP5, SP6, SP7, SP8, SP9, SP10, SP11, ENV2, ENV3, ENV4, ENV5, ENV6, ENV7, ENV8, ENV9, ENV10, ENV11, ENV12, H2, H4, INF1, INF3, INF4, INF6
- Green Infrastructure Provision on Draft Housing Allocation SD1, SP1, SP3, SP4, SP5, SP6, SP7, SP8, SP9, SP10, SP11, ENV5
- Existing Housing Commitment SP1
- Recently built developments not showing on map base
- Draft Mixed Use Employment-led Allocation SD1, SP1, SP2, SP3, SP4, SP5, SP6, SP7, SP8, SP9, SP10, SP11, EC1, ENV2, ENV3, ENV4, ENV5, ENV6, ENV7, ENV8, ENV9, ENV11, ENV12, H2, H4, INF1, INF3, INF4
- Existing Mixed Use Commitment (Housing, Employment, Open Space) SP1, SP2, EC2, INF3
- Draft Employment Allocation SD1, SP2, SP4, SP5, SP6, SP7, SP8, SP9, SP10, SP11, ENV2, ENV3, ENV4, ENV5, ENV6, ENV7, ENV8, ENV9, ENV11, ENV12, EC1, INF1, INF3, INF4
- Existing Employment Area SP2, EC2
- Mixed Use Opportunity Sites / Regeneration Area SP5, SP6, EC5
- Primary Shopping Area for Skipton EC5, EC5a
- Town Centre for Skipton and Settle EC5, EC5a

Tourism

- Tourism Development Commitment EC4
- Core Visitor Area (Tourism-Led, Mixed-Use Development Opportunity Site at Bolton Abbey) EC4a
- General locations for development within the Core Visitor Area at Bolton Abbey EC4a

Educational Provision

- Primary School Provision in Skipton Policy INF6

Safeguard Land and Transport

- Leeds – Liverpool Canal Corridor ENV2, ENV11
- Protection of Railway Trackbeds and Infrastructure SP2

- Scheduled Ancient Monument SD1, SP1, SP2, SP3, SP4, SP5, SP6, SP7, SP8, SP9, SP10, SP11, ENV1, ENV2, H1, H2, H3, EC1, EC3, EC4, EC4a, EC5, EC5a
- Parks and Gardens of Special Interest ENV1, ENV2

Other

- Plan Area Boundary
- Inset Map Area

INSET MAP No. 3: GLUSBURN, CROSS HILLS, SUTTON IN CRAVEN (1:12000)

