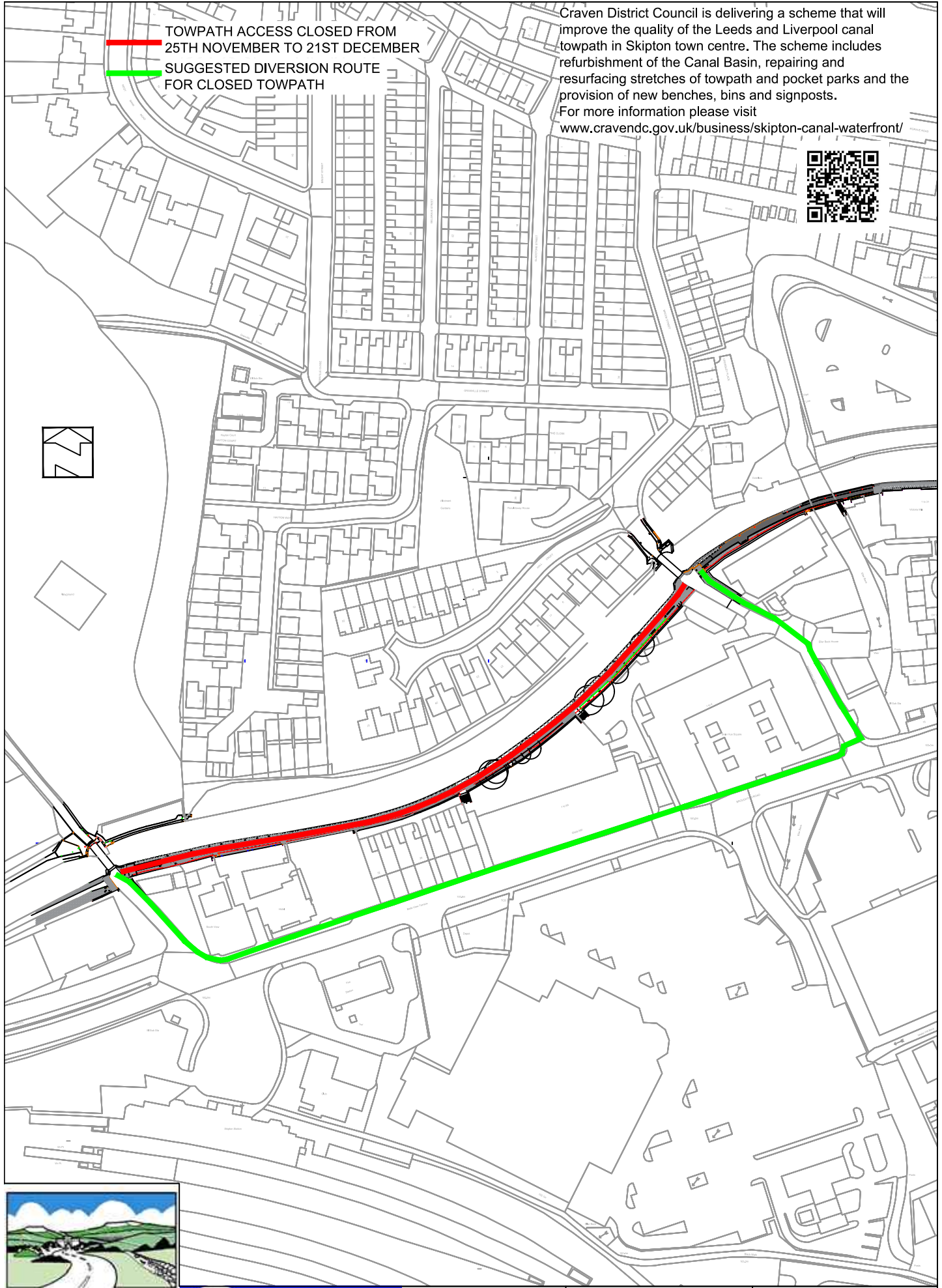


TOWPATH ACCESS CLOSED FROM
25TH NOVEMBER TO 21ST DECEMBER

SUGGESTED DIVERSION ROUTE
FOR CLOSED TOWPATH

Craven District Council is delivering a scheme that will improve the quality of the Leeds and Liverpool canal towpath in Skipton town centre. The scheme includes refurbishment of the Canal Basin, repairing and resurfacing stretches of towpath and pocket parks and the provision of new benches, bins and signposts. For more information please visit www.cravencd.gov.uk/business/skipton-canal-waterfront/



Craven
IN THE YORKSHIRE DALES
DISTRICT

 **Canal & River Trust**
Making life better by water

 **Borough of Pendle**

PROJECT:
SKIPTON CANAL WATERFRONT
IMPROVEMENTS

TITLE:
FOOTPATH ACCESS
DIVERSION PLAN