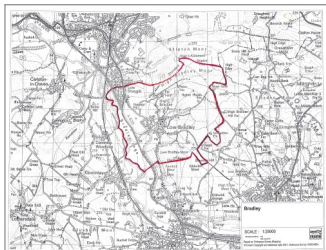
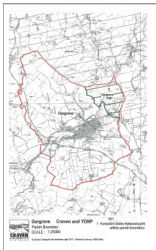


Issue 16  
February 2014

Planning Focus is a quarterly update on Craven District Council's local development plan & planning policy work.

## Progress on Bradley and Gargrave Neighbourhood Plans

Those who live and work in Bradley and Gargrave are being given the chance to have their say about future development in their communities. The Bradley Neighbourhood Area was designated on the 9th December 2013 by the Council's Spatial Planning Sub Committee and members of the same committee designated the Gargrave Neighbourhood Area on the 27th January 2014. Both areas were designated following a period of consultation and follow the parish boundary.

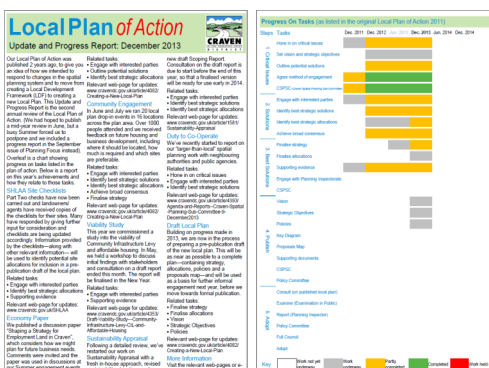


The next step following designation of the area is for each Parish Council to prepare a draft Neighbourhood Plan, with support from Craven District Council, that will show how the level of growth identified in the district's Local Plan will be met or exceeded. Both Neighbourhood Plans are required to be in line with the strategic policies contained within the District's Local Plan, however it is an opportunity for the Parish Council to set out the vision, aims, local policies and proposals for the future development of the neighbourhood area.

More details about the [Bradley and Gargrave Neighbourhood Areas and Plans](https://www.cravendc.gov.uk/article/3110/Neighbourhood-Planning) can be found at [www.cravendc.gov.uk/article/3110/Neighbourhood-Planning](https://www.cravendc.gov.uk/article/3110/Neighbourhood-Planning)

## Local Plan of Action

In December 2013 we published the latest update and progress report on our Local Plan of Action.



The report tells you about progress we've made during 2013 on the new local plan and updates you on what's happening next. The progress we've made (together) over the last year means we can now look at preparing a pre-publication draft of the new local plan as a basis for further informal engagement during 2014, before moving towards formal publication.

For more information, please visit our [Local Development Plan Timetable web-page](http://www.cravendc.gov.uk/LocalDevelopmentPlanTimetable) at [www.cravendc.gov.uk/LocalDevelopmentPlanTimetable](http://www.cravendc.gov.uk/LocalDevelopmentPlanTimetable)

# Sustainability Appraisal Scoping Report

Sustainability appraisal is a way of assessing different planning policies and sites according to how well they might achieve sustainable development . The first stage of sustainability appraisal is to consider the scope of the appraisal process.

The planning policy team have produced a draft Sustainability Appraisal Scoping Report for discussion with key agencies like the Environment Agency, Natural England and English Heritage.

The draft scoping report sets the scene for sustainability appraisal of a new local plan. It contains a review of plans and programmes of Government and other organisations that relate to the local area. It also includes a review of the local environment and a summary of local sustainability issues.



The scoping report will be used to determine a series of local sustainability objectives. These objectives will be used as a test when preparing planning policies and selecting sites for new housing and employment development in a new Local Plan according to how well they might achieve sustainable development.

Further information on the scoping report, sustainability appraisal and sustainable development is available on the [sustainability appraisal page](http://www.cravendc.gov.uk/article/1581/Sustainability-Appraisal) of the Council's website at [www.cravendc.gov.uk/article/1581/Sustainability-Appraisal](http://www.cravendc.gov.uk/article/1581/Sustainability-Appraisal).

## New Email Address

Please note planning policy's  
new email address is  
[localplan@cravendc.gov.uk](mailto:localplan@cravendc.gov.uk)

All emails sent to our previous address, [ldf@cravendc.gov.uk](mailto:ldf@cravendc.gov.uk) will be redirected to the new address.

## New Email Consultation Service

You may be aware that we've recently introduced a new email consultation service. If you have already subscribed to the new service you will benefit from the following additions to the standard consultation service:

- Personal notification of consultation events sent direct to your registered email address
- Your own electronic copy of our Planning Focus newsletter delivered quarterly to your Inbox

This is the last edition of the Planning Focus newsletter that will be delivered to all members of our old consultation database list. If you choose not to subscribe to the new service you will not receive future editions of the Planning Focus newsletter!

You will, however, continue to benefit from the standard consultation service:

- Notification of consultation events via local newspapers, our website and other general publicity
- Copies of consultation documents & Planning Focus provided via our website, local libraries and the Council's reception desk.

We value your input in the development of the Local Plan and encourage you to [subscribe to the new email consultation service](http://www.cravendc.gov.uk/latestplanningpolicynews) now at [www.cravendc.gov.uk/latestplanningpolicynews](http://www.cravendc.gov.uk/latestplanningpolicynews).

## Annual Monitoring Report

The 2012-2013 Monitoring Report will be ready to view from the end of February. The Report contains information on the Council's progress with the new Local Plan and includes key statistics helping to create a spatial profile of the district but also shows the level of development and changes which took place in the previous financial year. Some of the key headings for 2012-2013 include:

**118 new dwellings** were built, of which 38% were built on previously developed 'brownfield' land (including dwellings created through changes of use, sub-divisions and conversions).

There were **31 affordable homes completed** and **129 granted planning permission**.

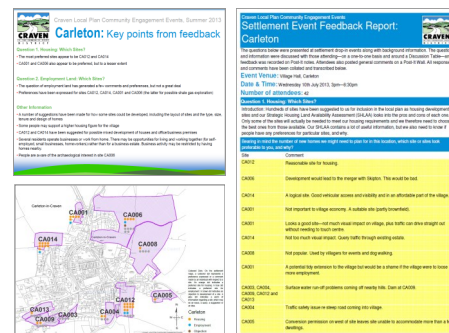
A total of **0.25 hectares of employment land** was completed.

There was a **net loss of 19 m<sup>2</sup> of retail floorspace** in 2012-13; 12 m<sup>2</sup> of new retail space was completed, and 31m<sup>2</sup> was lost through changes of use away from retail.

Please visit our webpage at [www.cravendc.gov.uk/PlanningPolicyMonitoring](http://www.cravendc.gov.uk/PlanningPolicyMonitoring) to download a [copy of the Annual Monitoring Report for 2012-2013](#)

## Feedback from Summer Events

Details of all feedback we received during the Community Engagement Events, held in June and July last year, are now available on-line.



If you visit our Creating a New Local Plan web-page you can download feedback information for each of the 4 sub-area events and 16 settlement events and see exactly what people said and wrote on their feedback forms.

There are also a few photographs from the events, including every Post-It note used to record a comment! This feedback is a unique and invaluable source of information that will help us to create a new local plan that's right for Craven. Visit [www.cravendc.gov.uk/creatingnewlocalplan](http://www.cravendc.gov.uk/creatingnewlocalplan) to see for yourself.



**Coverage & Distribution:** Planning Focus does not cover the Yorkshire Dales National Park. The National Park Authority (tel: 0300 4560030) deals with planning in that area. Planning Focus is distributed by email to all our planning policy contacts with registered email addresses. We do not distribute paper copies, because of the postage costs, but copies can be picked up at our offices and local libraries. If you would like to receive a copy of Planning Focus directly, please provide us with your email address, using the contact details below.

**Craven District Council** | 1 Belle Vue Square | Skipton | BD23 1FJ | [www.cravendc.gov.uk](http://www.cravendc.gov.uk)  
**Planning Policy Team** | 01756 706472 | [localplan@cravendc.gov.uk](mailto:localplan@cravendc.gov.uk)



If you would like to have this information in a way that's better for you, please telephone **01756 700600**.